

RNAV (GPS) RWY 17

HOBART RGNL (HBR)

APP CRS 173°	Rwy Idg 5507
	TDZE 1553
	Apt Elev 1564

⚠ For uncompensated BARO-VNAV systems, LNAV/VNAV NA below -18°C (0°F) or above 45°C (113°F). DME/DME RNP-0.3 NA. When local altimeter setting not received, use Altus/Quartz Mountain Rgnl altimeter setting and increase LNAV/VNAV DA to 1971 feet and all visibilities ¼ mile; increase all MDAs 80 feet, LNAV Cat C and D visibility ¼ mile. VDP and BARO-VNAV NA when using Altus/Quartz Mountain Rgnl altimeter setting.

MISSED APPROACH: Climb to 4000 direct DOMLE and hold.

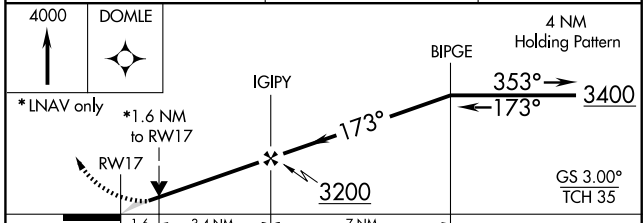
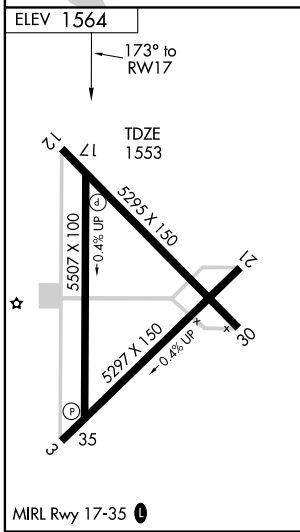
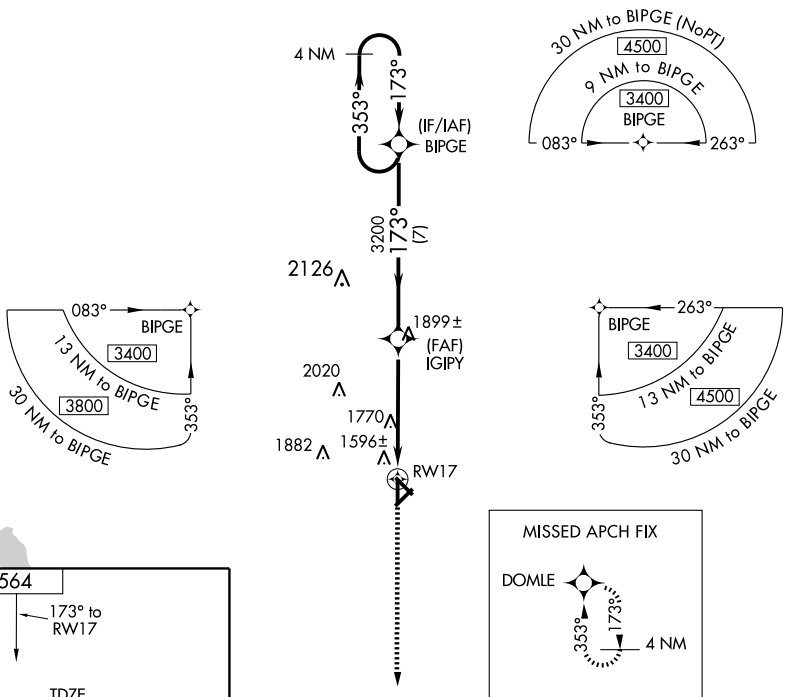
ASOS
133.325

ALTUS APP CON ★
125.1 257.725

UNICOM
122.8 (CTAF) 0

SC-1, 19 NOV 2009 to 17 DEC 2009

SC-1, 19 NOV 2009 to 17 DEC 2009



CATEGORY	A	B	C	D
LNAV/VNAV DA	1900-1¼ 347 (400-1¼)			
LNAV MDA	2080-1	527 (600-1)	2080-1½ 527 (600-1½)	2080-1¾ 527 (600-1¾)
CIRCLING	2080-1	516 (600-1)	2080-1½ 516 (600-1½)	2120-2 556 (600-2)