

VOR RWY 35

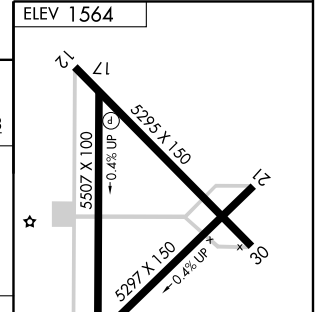
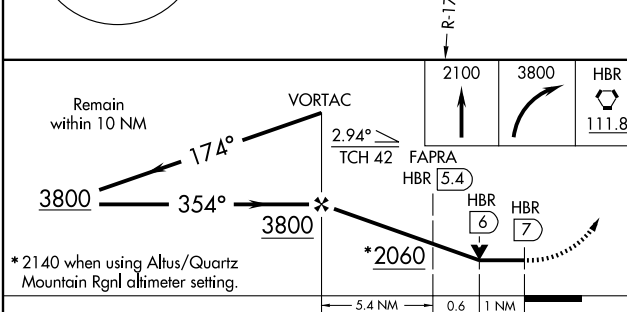
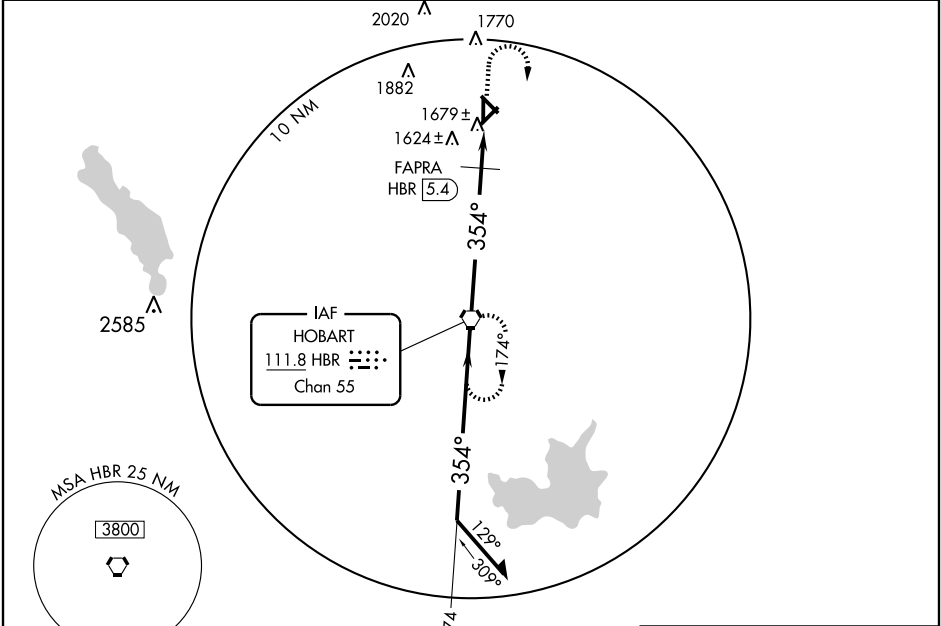
HOBART RGNL (HBR)

VORTAC HBR 111.8 Chan 55	APP CRS 354°	Rwy Idg 5507 TDZE 1561 Apt Elev 1564
--	------------------------	---

⚠ When local altimeter setting not received, use Alus/Quartz Mountain Rgnl altimeter setting and increase all MDAs 80 feet, S-35 Cat C and D visibility ¼ mile, FAPRA fix minimums S-35 Cat D visibility ¼ mile. VDP NA when using Alus/Quartz Mountain Rgnl altimeter setting.

MISSED APPROACH: Climb to 2100, then climbing right turn to 3800 direct HBR VORTAC and hold.

ASOS 133.325	ALTUS APP CON * 125.1 257.725	UNICOM 122.8 (CTAF) 0
------------------------	---	---------------------------------



CATEGORY	A	B	C	D
S-35	2060-1	499 (500-1)	2060-1¼ 499 (500-1¼)	2060-1½ 499 (500-1½)
CIRCLING	2060-1	496 (500-1)	2060-1½ 496 (500-1½)	2120-2 556 (600-2)
FAPRA FIX MINIMUMS				
S-35	1980-1	419 (500-1)	1980-1¼	419 (500-1¼)
CIRCLING	1980-1 416 (500-1)	2020-1 456 (500-1)	2020-1½ 456 (500-1½)	2120-2 556 (600-2)

ELEV 1564	12	41	12	30		
5507 X 100	5295 X 150	5297 X 150				
TDZE 1561	35					
	354° 7 NM from FAF					
	MIRL Rwy 17-35 0					
	FAF to MAP 7 NM					
	Knots	60	90	120	150	180
	Min:Sec	7:00	4:40	3:30	2:48	2:20

SC-1, 19 NOV 2009 to 17 DEC 2009

SC-1, 19 NOV 2009 to 17 DEC 2009