

RNAV (GPS) RWY 35

HOBART RGNL (HBR)

APP CRS 353°	Rwy Idg 5507
	TDZE 1561
	Apt Elev 1564

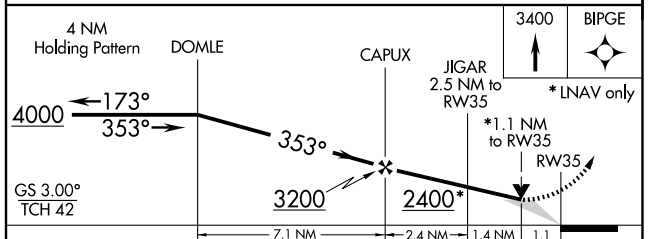
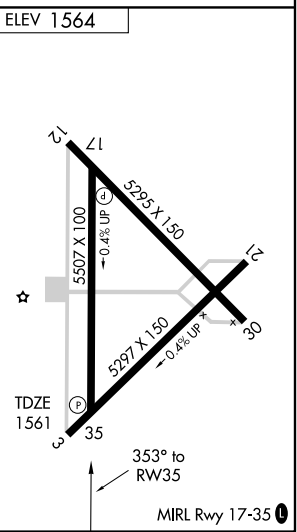
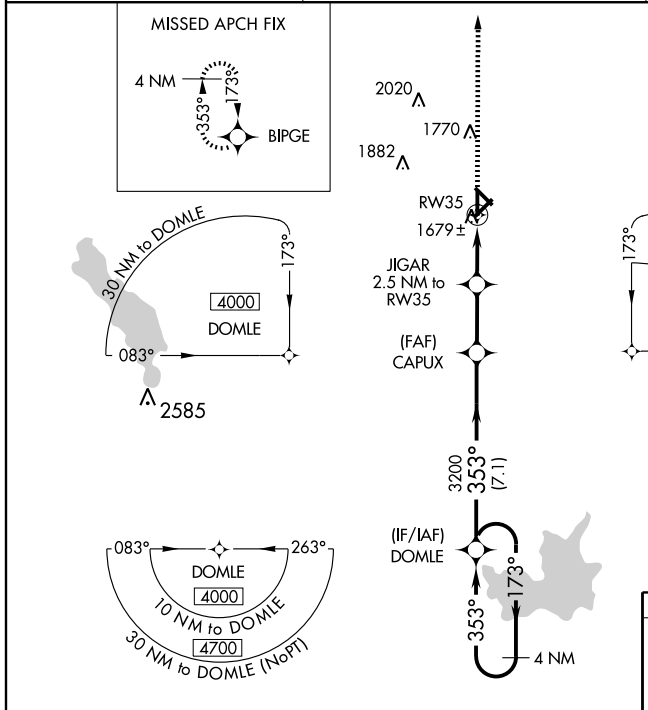
▼ For uncompensated BARO-VNAV systems, LNAV/VNAV NA below -18°C (0°F) or above 45°C (113°F). DME/DME RNP-0.3 NA. When local altimeter setting not received, use Altus/Quartz Mountain Rgnl altimeter setting and increase LNAV/VNAV DA to 2020 feet and all visibilities ½ mile; increase all MDAs 80 feet, Cat C and D visibility ¼ mile. BARO-VNAV and VDP NA when using Altus/Quartz Mountain Rgnl altimeter setting.

▲ MISSED APPROACH: Climb to 3400 direct BIPGE and hold.

ASOS
133.325

ALTUS APP CON *
125.1 257.725

UNICOM
122.8 (CTAF) 0



CATEGORY	A	B	C	D
LNAV/VNAV DA	1949-1¼ 388 (400-1¼)			
LNAV MDA	1940-1 379 (400-1)		1940-1¼ 379 (400-1¼)	
CIRCLING	1980-1 416 (500-1)	2020-1 456 (500-1)	2020-1½ 456 (500-1½)	2120-2 556 (600-2)

SC-1, 19 NOV 2009 to 17 DEC 2009

SC-1, 19 NOV 2009 to 17 DEC 2009

MIRL Rwy 17-35 0