

DUBUQUE, IOWA

AL-923 (FAA)

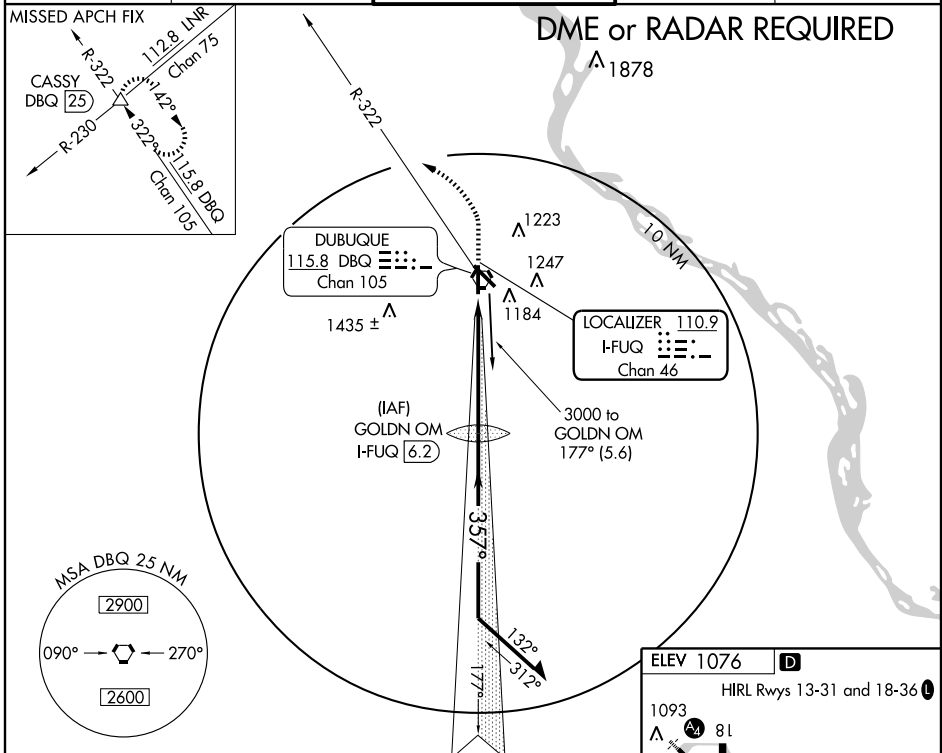
LOC/DME I-FUQ 110.9 Chan 46	APP CRS 357°	Rwy Idg TDZE Apt Elev	6327 1047 1076
---	------------------------	-----------------------------	---

ILS or LOC RWY 36

DUBUQUE RGNL (DBQ)

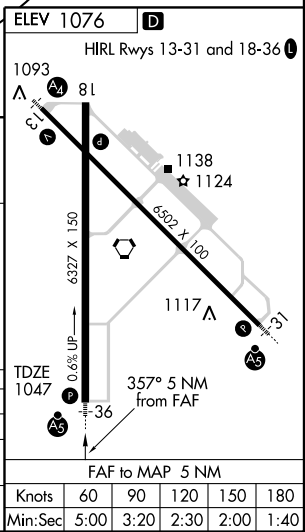
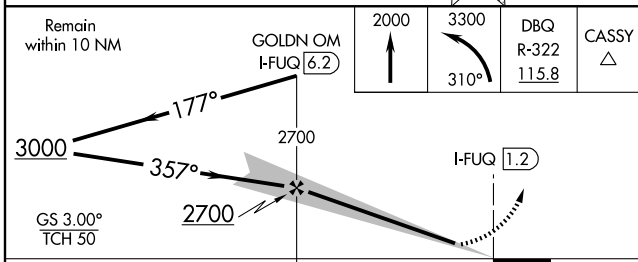
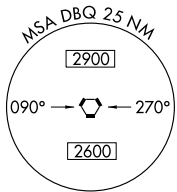
<p>▽ * RVR 1800 authorized with the use of FP or AP or HUD to DA.</p>	<p>MALSR AS</p>	<p>MISSED APPROACH: Climb to 2000 then climbing left turn to 3300 via heading 310° and DBQ R-322 to CASSY Int/DBQ 25 DME and hold.</p>
--	---------------------	--

ATIS 127.25	CHICAGO CENTER 133.95 281.4	DUBUQUE TOWER* 119.5 (CTAF) 254.4	GND CON 121.8	UNICOM 122.95
-----------------------	---------------------------------------	---	-------------------------	-------------------------



NC-3, 11 MAR 2010 to 08 APR 2010

NC-3, 11 MAR 2010 to 08 APR 2010



CATEGORY	A	B	C	D
S-ILS 36	* 1247/24 200 (200-½)			
S-LOC 36	1460/24	413 (400-½)	1460/40	413 (400-¾)
CIRCLING	1580-1	504 (600-1)	1580-1½ 504 (600-1½)	1640-2 564 (600-2)

DUBUQUE, IOWA
Orig-D 08325

42°24'N-90°43'W

DUBUQUE RGNL (DBQ)

ILS or LOC RWY 36