

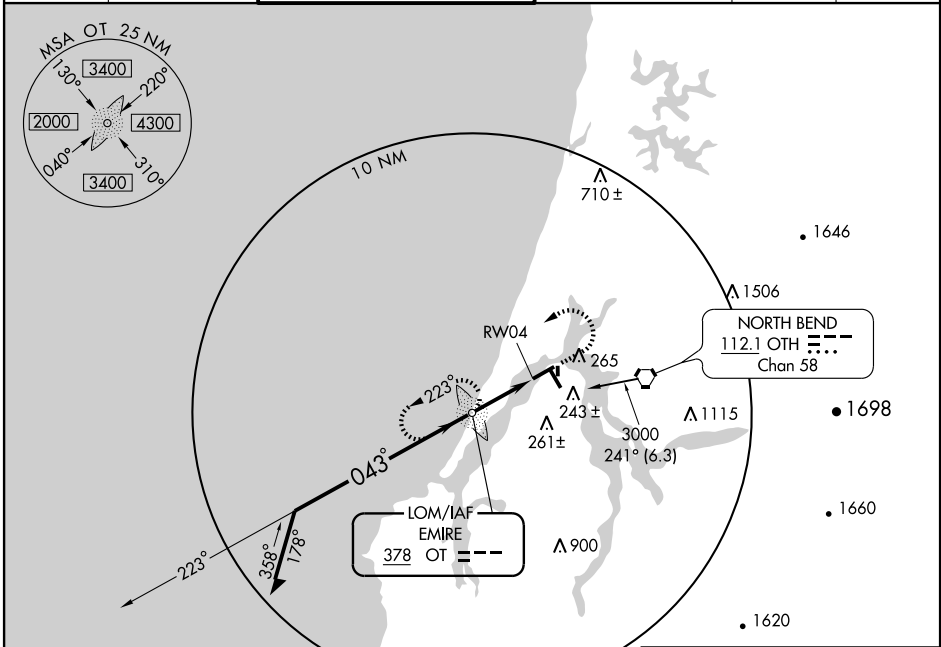
NDB or GPS RWY 4

NORTH BEND/SOUTHWEST OREGON RGNL (OTH)

LOM OT 378	APP CRS 043°	Rwy Idg TDZE Apt Elev 5321 16 17
----------------------	------------------------	--

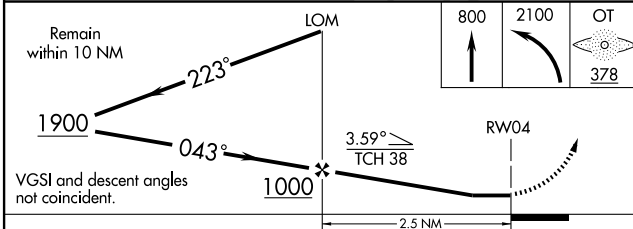
		MISSED APPROACH: Climb to 800, then climbing left turn to 2100 direct EMIRE (OT) LOM and hold, continue climb-in-hold to 2100.			

AWOS-3 135.075	SEATTLE CENTER 121.4 254.35	SOUTHWEST REGIONAL TOWER * 118.45 (CTAF)	MC MINNVILLE RADIO 122.4 255.4	GND CON 127.1	UNICOM 122.7
--------------------------	---------------------------------------	--	--	-------------------------	------------------------

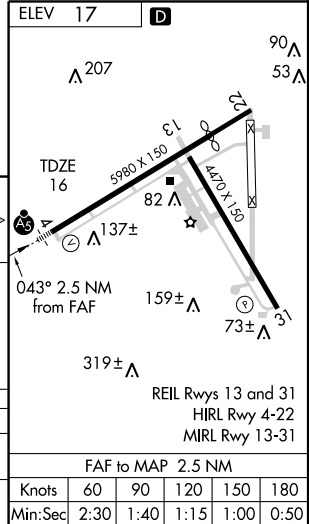


NW-1, 11 MAR 2010 to 08 APR 2010

NW-1, 11 MAR 2010 to 08 APR 2010



CATEGORY	A	B	C	D
S-4	660-1	644 (700-1)	660-1¼ 644 (700-1¼)	660-2 644 (700-2)
CIRCLING	740-1 723 (800-1)	740-1¼ 723 (800-1¼)	820-2¼ 803 (900-2¼)	1000-3 983 (1000-3)



NDB or GPS RWY 4

FAF to MAP 2.5 NM					
Knots	60	90	120	150	180
Min:Sec	2:30	1:40	1:15	1:00	0:50