

NORTH BEND, OREGON

AL-929 (FAA)

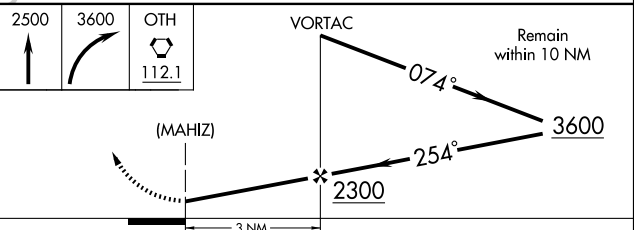
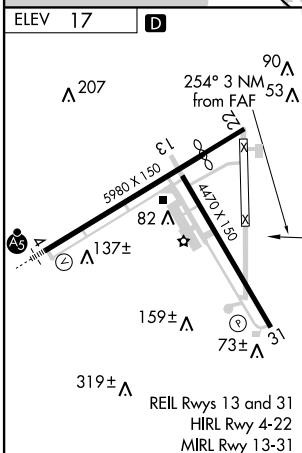
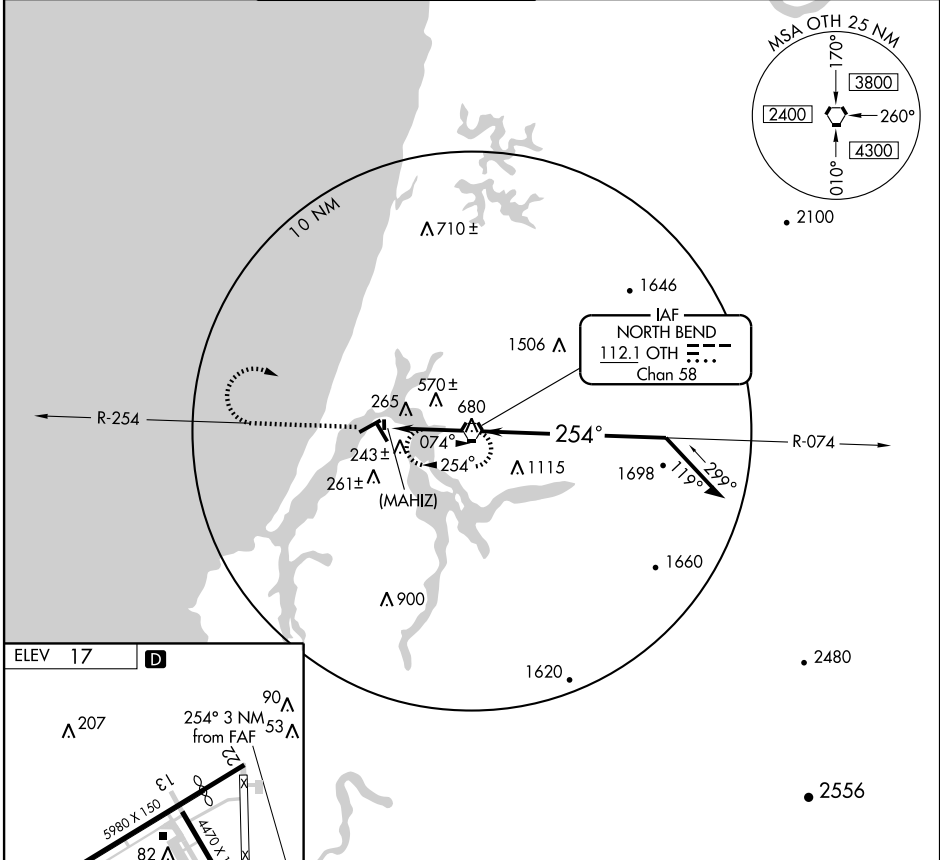
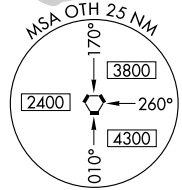
VOR or GPS-A

NORTH BEND/SOUTHWEST OREGON RGNL (OTH)

VORTAC OTH 112.1 Chan 58	APP CRS 254°	Rwy Idg TDZE Apt Elev N/A N/A 17
--	------------------------	--

MISSED APPROACH: Climb to 2500, then climbing right turn to 3600 direct OTH VORTAC and hold.

AWOS-3 135.075	SEATTLE CENTER 121.4 254.35	SOUTHWEST REGIONAL TOWER * 118.45 (CTAF)	MC MINNVILLE RADIO 122.4 255.4	GND CON 127.1	UNICOM 122.7
--------------------------	---------------------------------------	--	--	-------------------------	------------------------



FAF to MAP 3 NM					
Knots	60	90	120	150	180
Min:Sec	3:00	2:00	1:30	1:12	1:00

CATEGORY	A	B	C	D
CIRCLING	1100-1¼ 1086 (1100-1¼)	1100-1½ 1086 (1100-1½)	1100-3	1086 (1100-3)

NORTH BEND, OREGON
Amdt 4 09295

NORTH BEND/SOUTHWEST OREGON RGNL (OTH)
43°25'N - 124°15'W

VOR or GPS-A

NW-1, 11 MAR 2010 to 08 APR 2010

NW-1, 11 MAR 2010 to 08 APR 2010