

COPTER ILS or LOC RWY 4

NORTH BEND/SOUTHWEST OREGON RGNL (OTH)

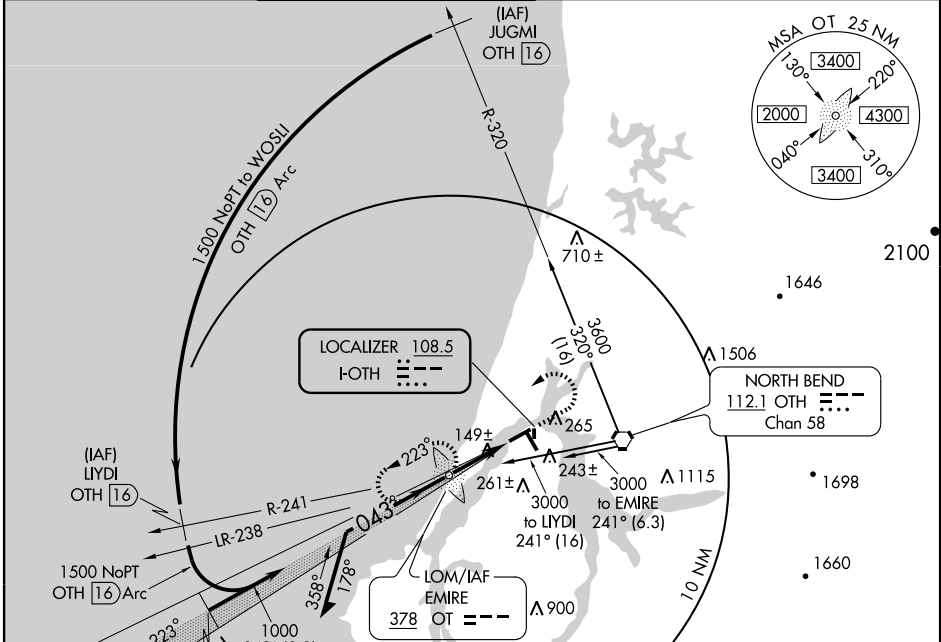
LOC I-OTH 108.5	APP CRS 043°	Rwy Idg 5321
		TDZE 16
		Apt Elev 17

ADF required.
If local altimeter setting not received, procedure NA.
US Coast Guard use only.



MISSED APPROACH: Climb to 500, then climbing left turn to 2100 direct EMIRE LOM and hold, continue climb-in-hold to 2100.

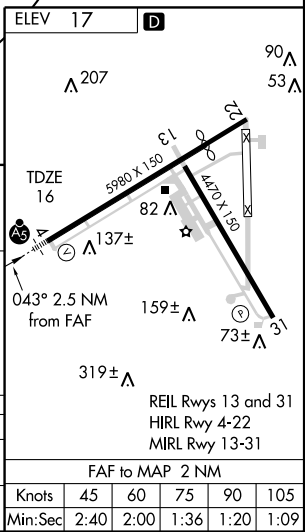
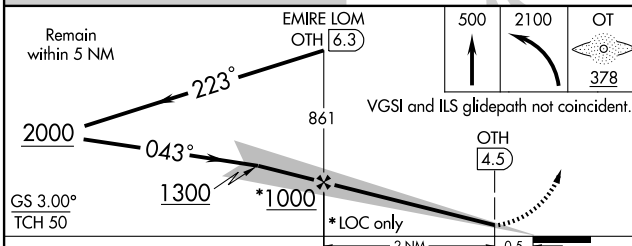
AWOS-3 135.075	SEATTLE CENTER 121.4 254.35	SOUTHWEST REGIONAL TOWER ★ 118.45 (CTAF) 0	MC MINNVILLE RADIO 122.4 255.4	GND CON 127.1	UNICOM 122.7
--------------------------	---------------------------------------	--	--	-------------------------	------------------------



NW-1, 19 NOV 2009 to 17 DEC 2009

NW-1, 19 NOV 2009 to 17 DEC 2009

ADF or DME REQUIRED



CATEGORY	COPTER	B	C	D
H-ILS 4	216-1/2 200 (200-1/2)		NA	
H-LOC 4	400-1/2 384 (400-1/2)		NA	