

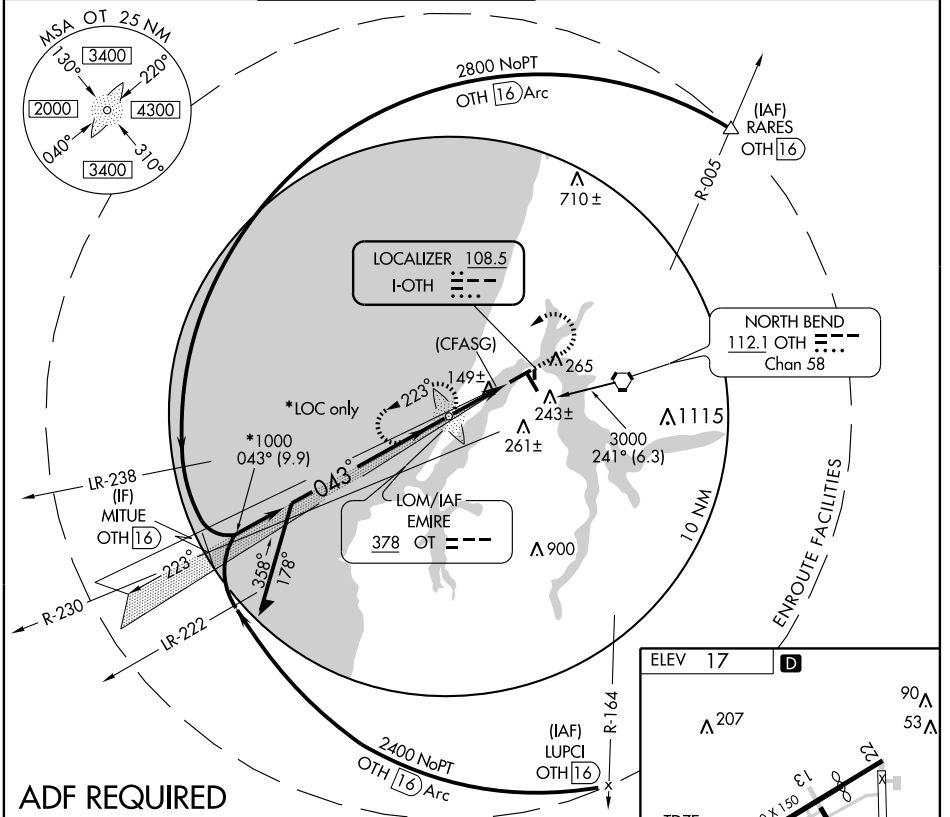
ILS or LOC RWY 4

NORTH BEND/ SOUTHWEST OREGON RGNL (OTH)

LOC I-OTH 108.5	APP CRS 043°	Rwy Idg 5321
		TDZE 16
		Apt Elev 17

	MALSR	MISSED APPROACH: Climb to 500, then climbing left turn to 2100 direct EMIRE LOM and hold, continue climb-in-hold to 2100.

AWOS-3 135.075	SEATTLE CENTER 121.4 254.35	SOUTHWEST REGIONAL TOWER * 118.45 (CTAF)	MC MINNVILLE RADIO 122.4 255.4	GND CON 127.1	UNICOM 122.7
--------------------------	---------------------------------------	--	--	-------------------------	------------------------



NW-1, 19 NOV 2009 to 17 DEC 2009

NW-1, 19 NOV 2009 to 17 DEC 2009

ADF REQUIRED

Remain within 10 NM

LOM

223°

043°

1900

861

GS 3.00° TCH 50

1300

*1000

*LOC only

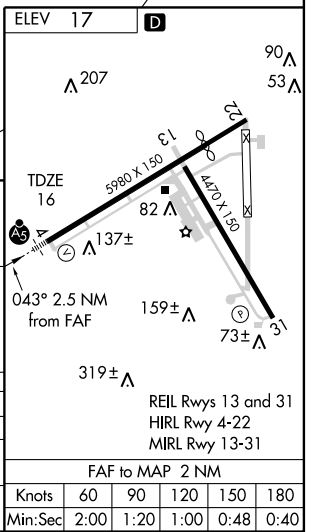
2 NM

0.5

(CFASG)

500	2100	OT
		378

CATEGORY	A	B	C	D
S-ILS 4		216-3/4	200 (200-3/4)	
S-LOC 4		400-1	384 (400-1)	400-1 1/4 384 (400-1 1/4)
CIRCLING	740-1	723 (800-1)	820-2 1/4 803 (900-2 1/4)	1000-3 983 (1000-3)



Knots	60	90	120	150	180
Min:Sec	2:00	1:20	1:00	0:48	0:40