

# RNAV (GPS) RWY 32

JANESVILLE/SOUTHERN WISCONSIN RGNL (JVL)

APP CRS	Rwy Idg	<b>7301</b>
<b>316°</b>	TDZE	<b>806</b>
	Apt Elev	<b>808</b>

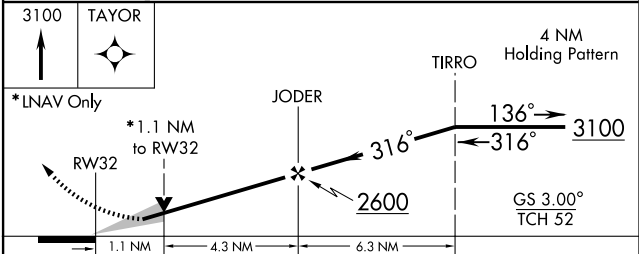
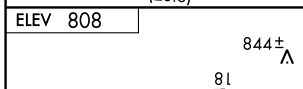
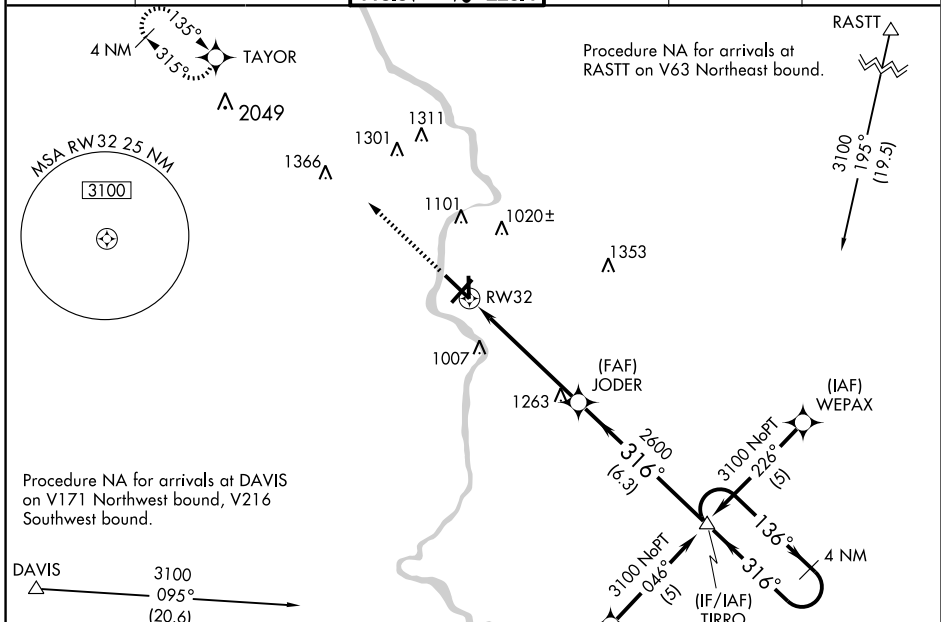
Baro-VNAV NA below -17°C (3°F). DME/DME RNP-0.3 NA. Baro-VNAV and VDP NA with Rockford altimeter setting. GPS or RNP-0.3 Required. Circling not authorized at night to Rwy 18. For inoperative MALS, increase LNAV/VNAV and LNAV Cat. D visibilities ¼ mile. When control tower closed, obtain local altimeter setting on UNICOM; when not received use Rockford altimeter setting and increase all DA/MDAs 80 feet.

MALS



MISSED APPROACH: Climb to 3100 direct TAYOR WP and hold.

ATIS	ROCKFORD APP CON	JANESVILLE TOWER ★	GND CON	CLNC DEL	UNICOM
<b>128.25</b>	<b>121.0 327.0</b>	<b>118.8 (CTAF) 0 225.4</b>	<b>121.65</b>	<b>121.65</b>	<b>122.95</b>



CATEGORY	A	B	C	D
GLS PA DA	NA			
LNAV/VNAV DA	1100-½ 294 (300-½)		1100-¾ 294 (300-¾)	
LNAV MDA	1200-½ 394 (400-½)		1200-1 394 (400-1)	
CIRCLING	1260-1 452 (500-1)		1280-1½ 472 (500-1½)	
			1420-2 612 (700-2)	

REIL Rwy 22  
 REIL Rwy 14  
 MIRL Rwy 18-36  
 HIRL Rws 4-22 and 14-32

EC-3, 11 MAR 2010 to 08 APR 2010

EC-3, 11 MAR 2010 to 08 APR 2010