

RNAV (GPS) RWY 10

CAPE GIRARDEAU RGNL (CGI)

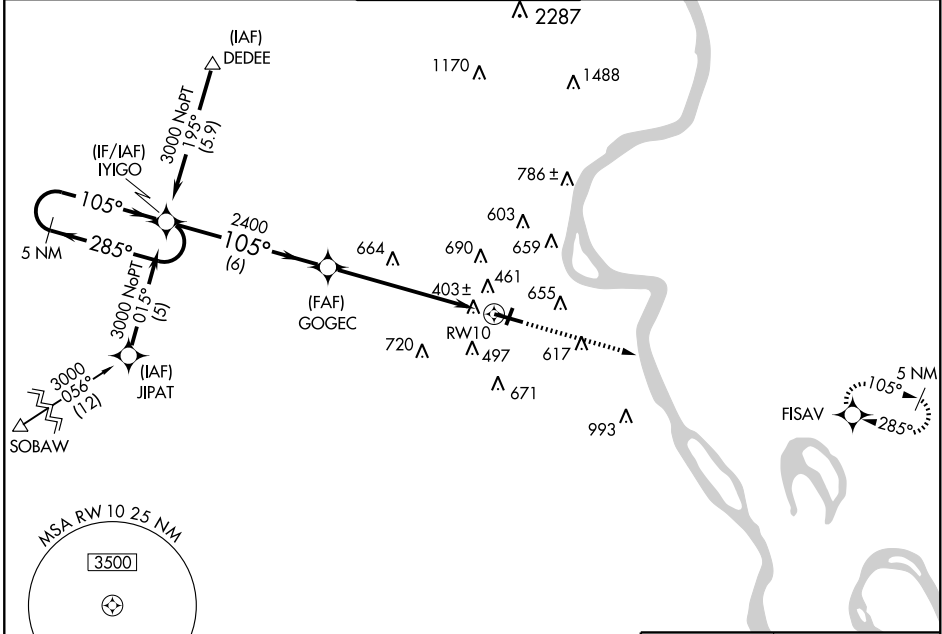
WAAS CH 61399 W10A	APP CRS 105°	Rwy Idg 6499 TDZE 338 Apt Elev 342
----------------------------------------	------------------------	---------------------------------------------------------------

▼ DME/DME RNP-0.3 NA. Baro-VNAV NA below -15°C (5°F).
 If local altimeter setting not received, use Carbondale, IL altimeter setting and increase all DAs/MDAs 100 feet.
▲ Baro-VNAV and VDP NA with Carbondale altimeter setting.
 For inoperative MALSR increase LPV all Cats. visibility to ¾.

MALSR

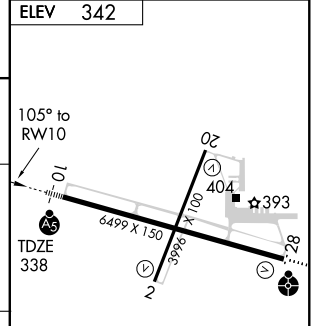
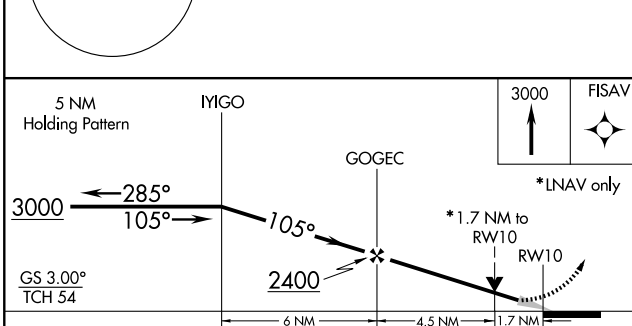
MISSED APPROACH: Climb to 3000 direct FISAV and hold.

ASOS 120.55	MEMPHIS CENTER 133.65 292.15	CAPE GIRARDEAU TOWER * 125.525 (CTAF) 0	GND CON 121.6	UNICOM 122.95
-----------------------	----------------------------------------	---------------------------------------------------	-------------------------	-------------------------



NC-3, 11 MAR 2010 to 08 APR 2010

NC-3, 11 MAR 2010 to 08 APR 2010



CATEGORY	A	B	C	D
LPV DA		588-½	250 (300-½)	
LNAV/VNAV DA		723-¾	385 (400-¾)	
LNAV MDA	940-½	602 (600-½)	940-1¼ 602 (600-1¼)	940-1½ 602 (600-1½)
CIRCLING	940-1¼ 598 (600-1¼)	960-1¼ 618 (700-1¼)	960-1¾ 618 (700-1¾)	1000-2 658 (700-2)

MIRL Rwy 2-20
HIRL Rwy 10-28