

# LOC/DME BC RWY 28

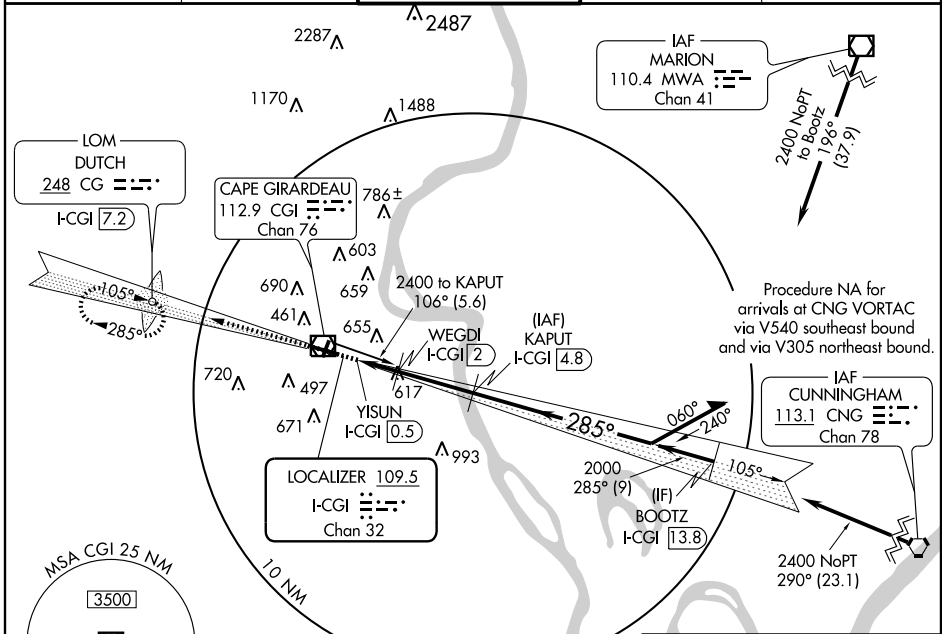
CAPE GIRARDEAU RGNL (CGI)

LOC I-CGI <b>109.5</b> Chan 32	APP CRS <b>285°</b>	Rwy Idg TDZE Apt Elev	<b>6499</b> <b>341</b> <b>342</b>
--------------------------------------	------------------------	-----------------------------	---

**▼** Inoperative table does not apply to Cat C. Visibility reduction by helicopters NA. When local altimeter setting not received, use Cairo Rgnl altimeter setting and increase all MDA 60 feet and increase Circling Cats C, D visibility ¼ mile. VDP NA when using Cairo Rgnl altimeter setting.

**ODALS** MISSED APPROACH: Climb to 2400 via I-CGI front course to DUTCH LOM/I-CGI 7.2 DME and hold.

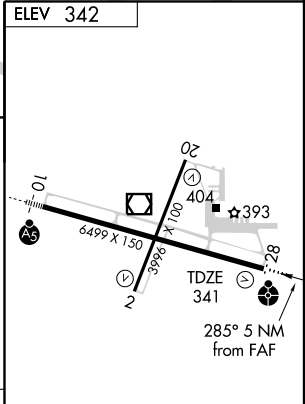
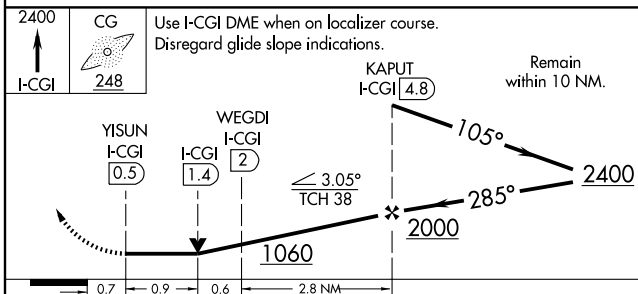
ASOS <b>120.55</b>	MEMPHIS CENTER <b>133.65 292.15</b>	CAPE GIRARDEAU TOWER * <b>125.525</b> (CTAF)	GND CON <b>121.6</b>	UNICOM <b>122.95</b>
-----------------------	--	---	-------------------------	-------------------------



NC-3, 11 MAR 2010 to 08 APR 2010

NC-3, 11 MAR 2010 to 08 APR 2010

## BACK COURSE



CATEGORY	A	B	C	D
S-28	880-¾ 539 (600-¾)		880-1½ 539 (600-1½)	880-1¾ 539 (600-1¾)
CIRCLING	880-1 538 (600-1)	960-1 618 (700-1)	960-1¾ 618 (700-1¾)	1000-2 658 (700-2)

MIRL Rwy 2-20  
HIRL Rwy 10-28