

VORTAC ALO <b>112.2</b> Chan 59	APP CRS <b>294°</b>	Rwy Ldg TDZE Apt Elev	<b>8400</b> <b>867</b> <b>873</b>
---------------------------------------	------------------------	-----------------------------	---

# VOR/DME RWY 30

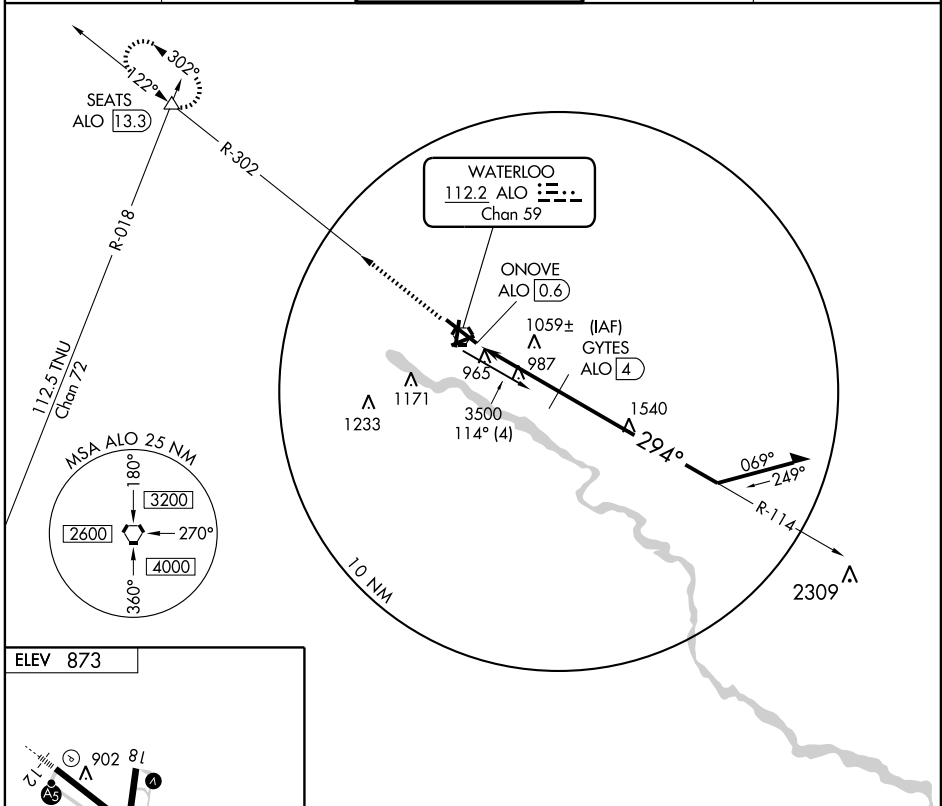
WATERLOO RGNL (A.L.O)

**⚠** Inoperative table does not apply to Cat C.  
**⚠** If local altimeter setting not received, use Independence altimeter setting and increase all MDAs 80 feet.

MALSR  
-  
=

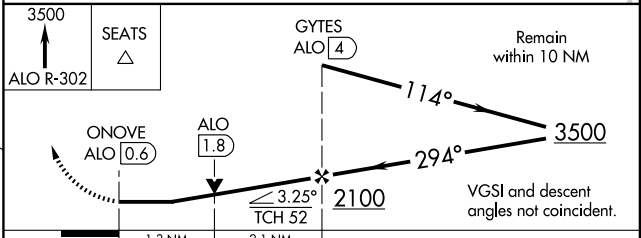
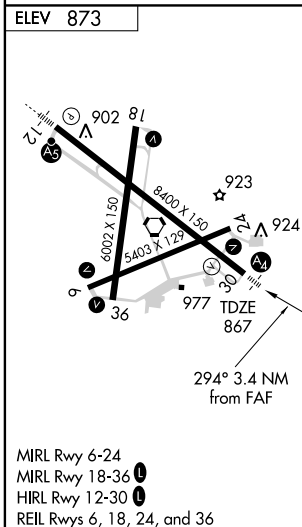
MISSED APPROACH: Climb to 3500 via ALO R-302 to SEATS Int/13.3 DME and hold.

ATIS <b>120.65</b>	WATERLOO APP CON * <b>118.9 251.15</b>	WATERLOO TOWER * <b>125.075 (CTAF) 257.8</b>	GND CON <b>121.9 269.1</b>	UNICOM <b>122.95</b>
-----------------------	---	---	-------------------------------	-------------------------



NC-3, 11 MAR 2010 to 08 APR 2010

NC-3, 11 MAR 2010 to 08 APR 2010



CATEGORY	A	B	C	D
S-30	1320-3/4 453 (500-3/4)		1320-1/4 453 (500-1/4)	1320-1/2 453 (500-1/2)
CIRCLING	1380-1 507 (600-1)		1380-1/2 507 (600-1/2)	1480-2 607 (700-2)