



# RNAV (GPS) RWY 15

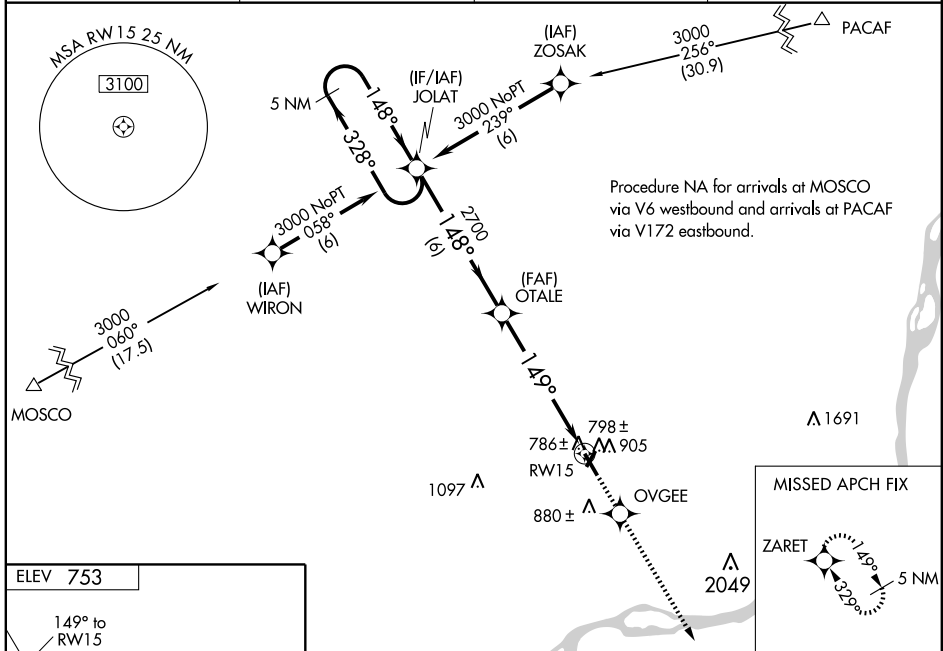
DAVENPORT MUNI (DVN)

WAAS CH <b>81821</b> W15A	APP CRS <b>149°</b>	Rwy Idg TDZE Apt Elev	<b>5511</b> <b>751</b> <b>753</b>
---------------------------------	------------------------	-----------------------------	---

**⚠** DME/DME RNP-0.3 NA.  
**⚠** For uncompensated Baro-VNAV systems, LNAV/VNAV NA below -16°C (4°F) or above 47°C (117°F).  
 If local altimeter setting not received, use Quad City Intl altimeter setting and increase all DAs/MDAs 60 feet.  
 VDP and Baro-VNAV NA when using Quad City Intl altimeter setting.  
 For inoperative MALSR, increase LPV visibility all Cats. to ¾.

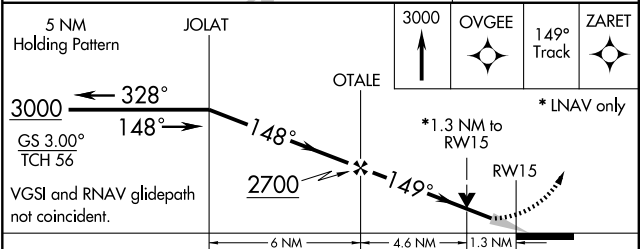
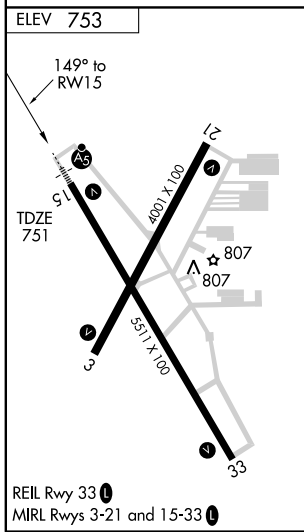
**MALSR**  
  
**MISSED APPROACH:** Climb to 3000 direct OVGEE and via 149° track to ZARET and hold.

AWOS-3 <b>120.175</b>	QUAD CITY APP CON * <b>125.95 257.8</b>	CLNC DEL <b>118.35</b>	UNICOM <b>123.0 (CTAF)</b> 
--------------------------	--	---------------------------	---



NC-3, 11 MAR 2010 to 08 APR 2010

NC-3, 11 MAR 2010 to 08 APR 2010



CATEGORY	A	B	C	D
LPV DA		1001-½	250 (300-½)	
LNAV/VNAV DA		1111-¾	360 (400-¾)	
LNAV MDA	1200-½	449 (500-½)	1200-¾ 449 (500-¾)	1200-1 449 (500-1)
CIRCLING	1220-1¼	467 (500-1¼)	1220-1½ 467 (500-1½)	1320-2 567 (600-2)