

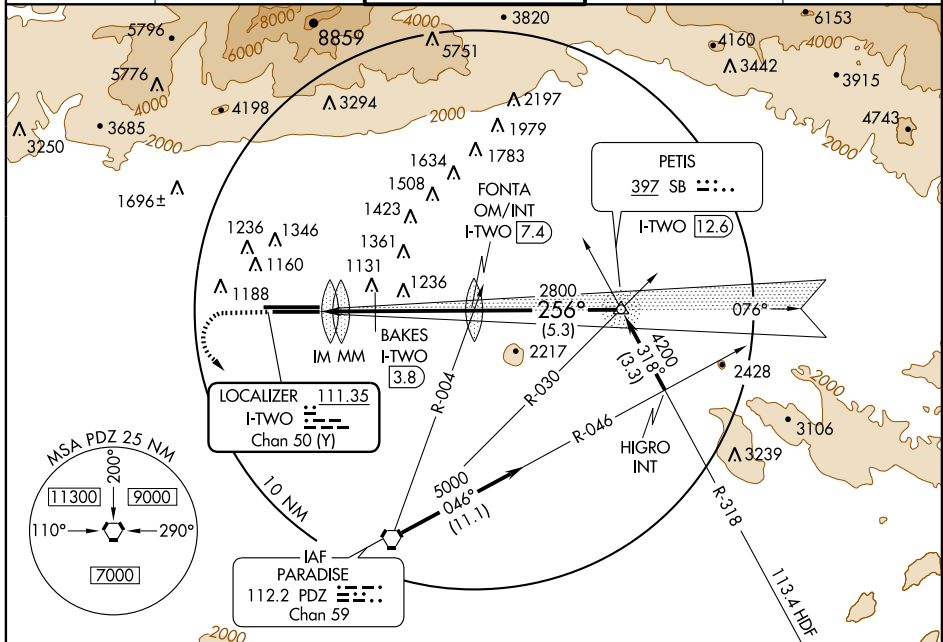
ILS or LOC RWY 26L

ONTARIO INTL (ONT)

LOC/DME I-TWO 111.35 Chan 50 (Y)	APP CRS 256°	Rwy Idg 26L 10200 TDZE 926 Apt Elev 944	Rwy Idg 26R 12197 TDZE 932 Apt Elev 944
---	------------------------	--	--

			MISSED APPROACH: Climb to 1700 then climbing left turn to 4000 direct PDZ VORTAC.

ATIS 124.25	SOCAL APP CON 127.25 318.2	ONTARIO TOWER 120.6 360.775	GND CON 121.9 257.8	CLNC DEL 118.1
-----------------------	--------------------------------------	---------------------------------------	-------------------------------	--------------------------



SW-3, 11 MAR 2010 to 08 APR 2010

SW-3, 11 MAR 2010 to 08 APR 2010

ELEV 944	1700	4000	PDZ	112.2	FONTA OM/INT I-TWO 7.4	PETIS NDB/INT I-TWO 12.6	Procedure Turn NA
1104±	↑	↶	⬠				
976	1100	982	1100	1100	2767	4200	GS 3.00° TCH 50
1000±	1021	1021	1021	1021	2800		
1011	1039	991	1039	991	1540*		
10200 X 150	10200 X 150	926	926	926	1540*		
256° 5.5 NM from FAF							
TDZ/CL Rwy 8L and 26L							
HIRL Rwy 8L-26R and 8R-26L							
FAF to MAP 5.5 NM							
Knots	60	90	120	150	180		
Min:Sec	5:30	3:40	2:45	2:12	1:50		
CATEGORY	A		B		C		D
S-ILS 26L	1126/18		200 (200-½)				
S-LOC 26L	1540/24	614 (600-½)	1540/60	614 (600-¼)	1540-1½	614 (600-½)	
SIDESTEP RWY 26R	1540/50	608 (600-1)	1540/60	608 (600-¼)	1540-1½	608 (600-½)	
CIRCLING	1540-1	596 (600-1)	1540-1¾	596 (600-¾)	1540-2	596 (600-2)	
BAKES DME MINIMUMS							
S-LOC 26L	1340/24	414 (400-½)	1340/40	414 (400-¾)			
CIRCLING	1380-1	436 (500-1)	1400-1	456 (500-1)	1400-1½	456 (500-½)	1500-2
							556 (600-2)