



# RNAV (GPS) RWY 25

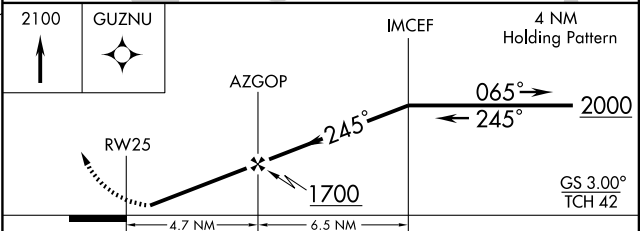
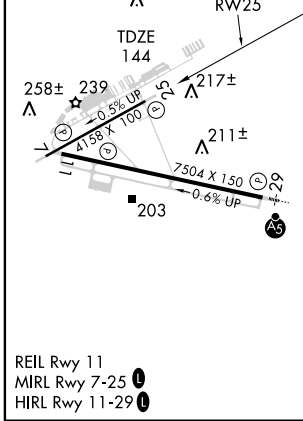
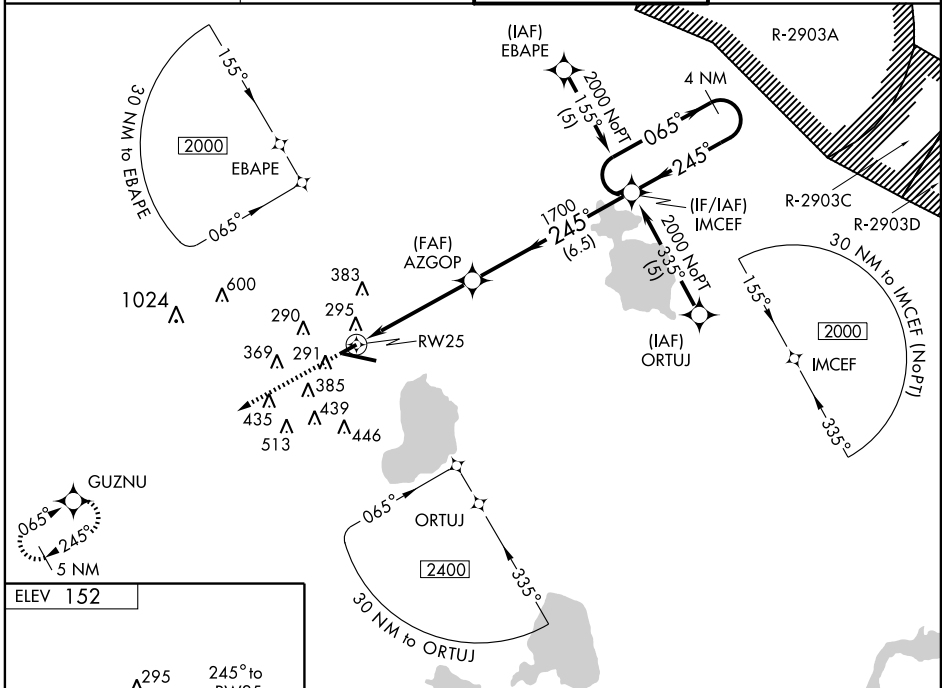
GAINESVILLE RGNL (GNV)

WAAS CH <b>86604</b> <b>W25A</b>	APP CRS <b>245°</b>	Rwy Idg <b>4158</b> TDZE <b>144</b> Apt Elev <b>152</b>
--	------------------------	---

DME/DME RNP-0.3 NA. Visibility reduction by helicopters NA.  
Baro-VNAV NA when using Ocala Intl-Jim Taylor altimeter setting.  
 For uncompensated Baro-VNAV systems, LNAV/VNAV NA below -15°C (5°F) or above 48°C (118°F).  
 If local altimeter setting not received, use Ocala Intl-Jim Taylor altimeter setting and increase LPV DA to 494 feet, LNAV/VNAV DA to 694 feet, and increase all MDAs 100 feet.

MISSED APPROACH: Climb to 2100 direct GUZNU and hold.

ATIS <b>127.15</b>	JACKSONVILLE APP CON <b>121.3 269.325</b>	GAINESVILLE TOWER ★ <b>119.55 (CTAF) 0 353.7</b>	GND CON <b>121.7</b>
-----------------------	--	---	-------------------------



CATEGORY	A	B	C	D
LPV DA	413-1 269 (300-1)			
LNAV/VNAV DA	555-1½ 411 (500-1½)			
LNAV MDA	560-1	416 (500-1)	560-1¼	416 (500-1¼)
CIRCLING	620-1	468 (500-1)	620-1½	740-2
			468 (500-1½)	588 (600-2)

SE-3, 11 MAR 2010 to 08 APR 2010

SE-3, 11 MAR 2010 to 08 APR 2010