

MC ALESTER, OKLAHOMA

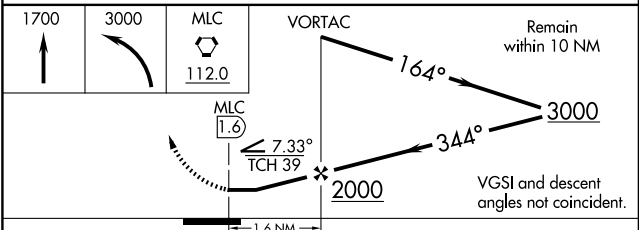
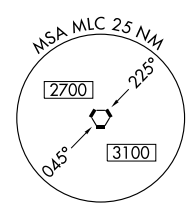
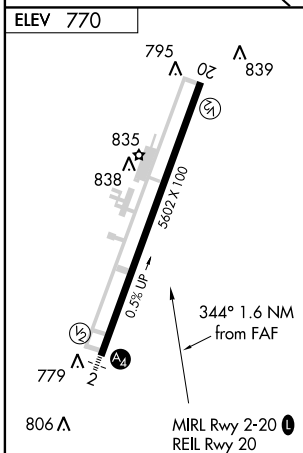
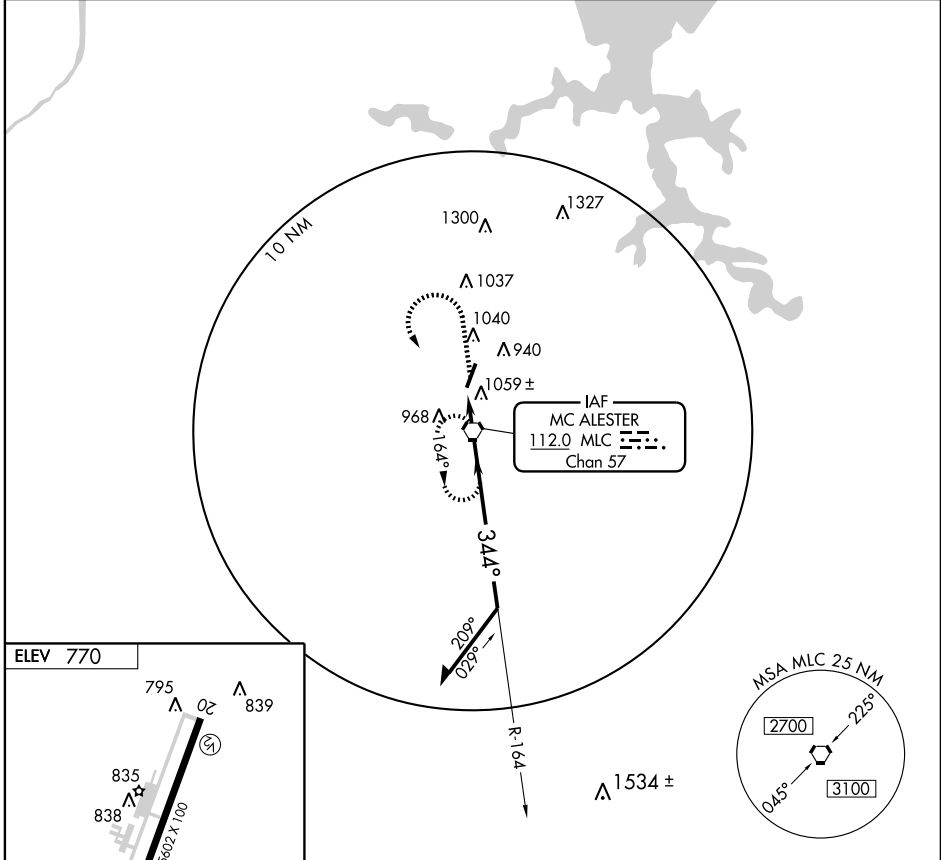
AL-978 (FAA)

VOR-A
MC ALESTER RGNL (MLC)

VORTAC MLC 112.0 Chan 57	APP CRS 344°	Rwy Idg TDZE Apt Elev	N/A N/A 770
---------------------------------------	------------------------	-----------------------------	--

▽ MISSED APPROACH: Climb to 1700 then climbing left turn to 3000 direct MLC VORTAC and hold.

ASOS 135.125	FORT WORTH CENTER 132.2 338.35	MC ALESTER RADIO 122.65	UNICOM 122.95 (CTAF) 0
------------------------	--	-----------------------------------	---



FAF to MAP 1.6 NM						
Knots	60	90	120	150	180	
Min:Sec	1:36	1:04	0:48	0:38	0:32	
CATEGORY	A		B		C	D
CIRCLING	1400-1		630 (700-1)		1400-1¾ 630 (700-1¾)	NA

MC ALESTER, OKLAHOMA
Amdt 13A 09155

34° 53' N-95° 47' W

MC ALESTER RGNL (MLC)
VOR-A

SC-1, 11 MAR 2010 to 08 APR 2010

SC-1, 11 MAR 2010 to 08 APR 2010