

LOC/DME I-VQVQ 109.5 Chan 32	APP CRS 005°	Rwy ldg 12503 TDZE 75 Apt Elev 81
--	------------------------	--

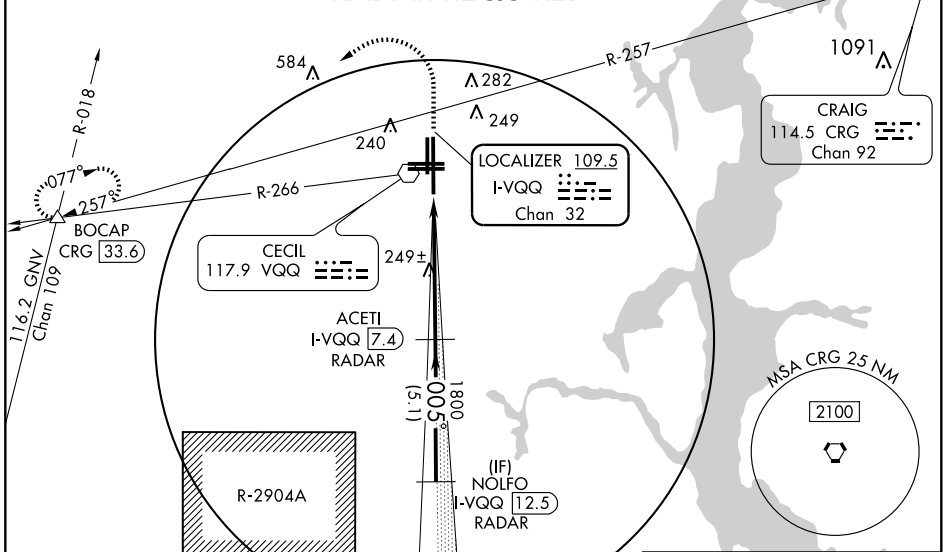
ILS or LOC RWY 36R

JACKSONVILLE/CECIL FIELD (VQQ)

VDP NA with Jacksonville Intl altimeter setting. If local altimeter setting not received, use Jacksonville Intl altimeter setting and increase all DAs/MDAs 60 feet. For inoperative MALSR, increase S-ILS 36R Cat. E visibility to 3/4 and S-LOC 36R Cat. E visibility to 1 1/2. DME or RADAR REQUIRED.		MALSR 	MISSED APPROACH: Climb to 800 then climbing left turn to 2000 via heading 210° and CRG VORTAC R-257 to BOCAP Int/CRG 33.6 DME and hold.		
JACKSONVILLE APP CON 123.8 284.6	CECIL TOWER★ 126.1 (CTAF) 387.025	GND CON 121.625 384.4	CLNC DEL 121.625	GCO 121.725	UNICOM 122.95

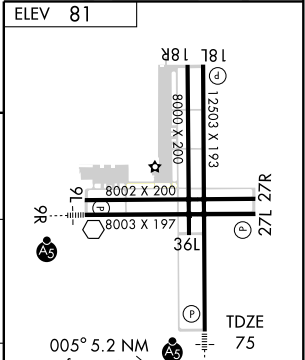
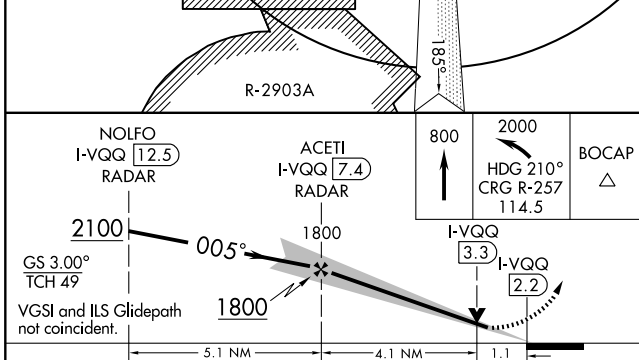
ATIS
125.275

RADAR REQUIRED



SE-3, 11 MAR 2010 to 08 APR 2010

SE-3, 11 MAR 2010 to 08 APR 2010



CATEGORY	A	B	C	D	E
S-ILS 36R	275-1/2 200 (200-1/2)				
S-LOC 36R	500-1/2	425 (500-1/2)	500-3/4	425 (500-3/4)	500-1 425 (500-1)
CIRCLING	540-1	459 (500-1)	560-1 1/2 479 (500-1 1/2)	640-2	559 (600-2)

HIRL Rwy 9R-27L and 18L-36R	AS
REIL Rwys 27L and 18L	AS
FAF to MAP 5.2 NM	
Knots	60 90 120 150 180
Min:Sec	5:12 3:28 2:36 2:05 1:44