

ROGERS, ARKANSAS

AL-5002 (FAA)

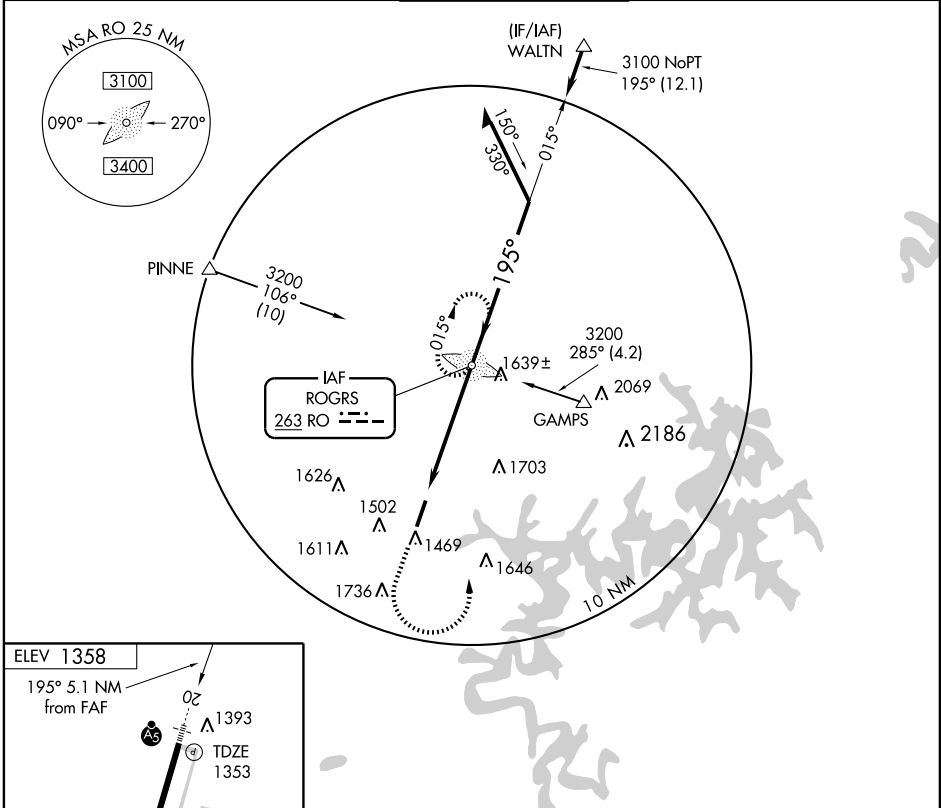
NDB RWY 20

ROGERS MUNI-CARTER FIELD (ROG)

LOM RO 263	APP CRS 195°	Rwy Idg 6011	TDZE 1353
		Apt Elev 1358	

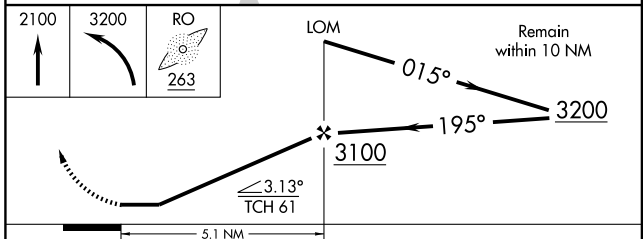
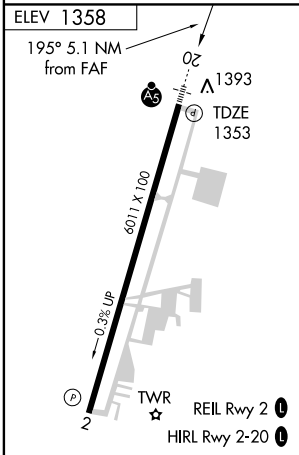
NA		MISSED APPROACH: Climb to 2100, then climbing left turn to 3200 direct RO LOM and hold.		
----	--	---	--	--

AWOS-3 134.375	RAZORBACK APP CON* 126.6 305.2	ROGERS TOWER* 119.375 (CTAF) 0	GND CON 118.0	CLNC DEL 121.75
--------------------------	--	--	-------------------------	---------------------------



SC-1, 11 MAR 2010 to 08 APR 2010

SC-1, 11 MAR 2010 to 08 APR 2010



CATEGORY	A	B	C	D
S-20	1780- ³ / ₄ 427 (500- ³ / ₄)			1780-1 ¹ / ₄ 427 (500-1 ¹ / ₄)
CIRCLING	1780-1 422 (500-1)	1820-1 462 (500-1)	1820-1 ¹ / ₂ 462 (500-1 ¹ / ₂)	1920-2 562 (600-2)

ROGERS, ARKANSAS
Amdt 1A 07130

36°22'N-94°06'W

ROGERS MUNI-CARTER FIELD (ROG)
NDB RWY 20