

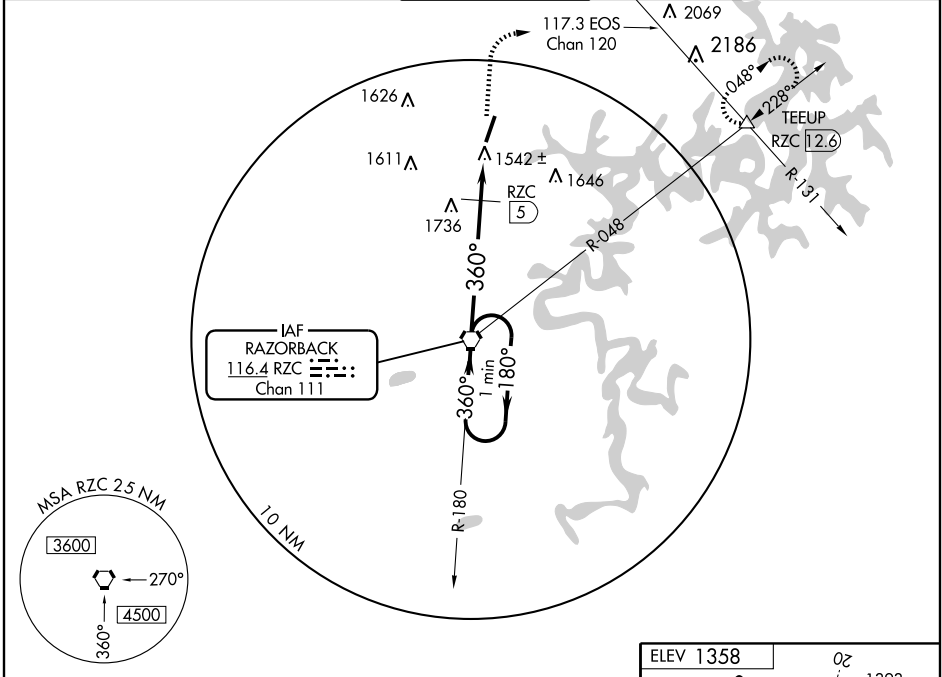
VORTAC RZC <b>116.4</b> Chan 111	APP CRS <b>360°</b>	Rwy Idg TDZE <b>1358</b> Apt Elev <b>1358</b>	<b>6011</b>
--	------------------------	---	-------------

# VOR RWY 2

ROGERS MUNI-CARTER FIELD (ROG)

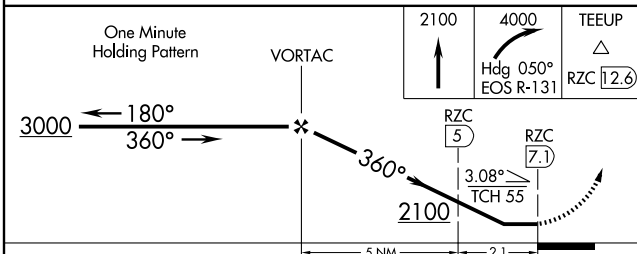
**MISSED APPROACH:** Climb to 2100, then climbing right turn to 4000 via heading 050° and EOS R-131 to TEEUP Int and hold.

AWOS-3 <b>134.375</b>	RAZORBACK APP CON* <b>126.6 305.2</b>	<b>ROGERS TOWER*</b> <b>119.375</b> (CTAF) <b>1</b>	GND CON <b>118.0</b>	CLNC DEL <b>121.75</b>
--------------------------	--	--	-------------------------	---------------------------



SC-1, 11 MAR 2010 to 08 APR 2010

SC-1, 11 MAR 2010 to 08 APR 2010



CATEGORY	A	B	C	D
S-2	2100-1 742 (800-1)	2100-1¼ 742 (800-1¼)	2100-2¼ 742 (800-2¼)	2100-2½ 742 (800-2½)
CIRCLING	2100-1 742 (800-1)	2100-1¼ 742 (800-1¼)	2100-2¼ 742 (800-2¼)	2100-2½ 742 (800-2½)
DME MINIMUMS				
S-2	1800-1	442 (500-1)	1800-1¼ 442 (500-1¼)	1800-1½ 442 (500-1½)
CIRCLING	1800-1 442 (500-1)	1820-1 462 (500-1)	1820-1½ 462 (500-1½)	1920-2 562 (600-2)

