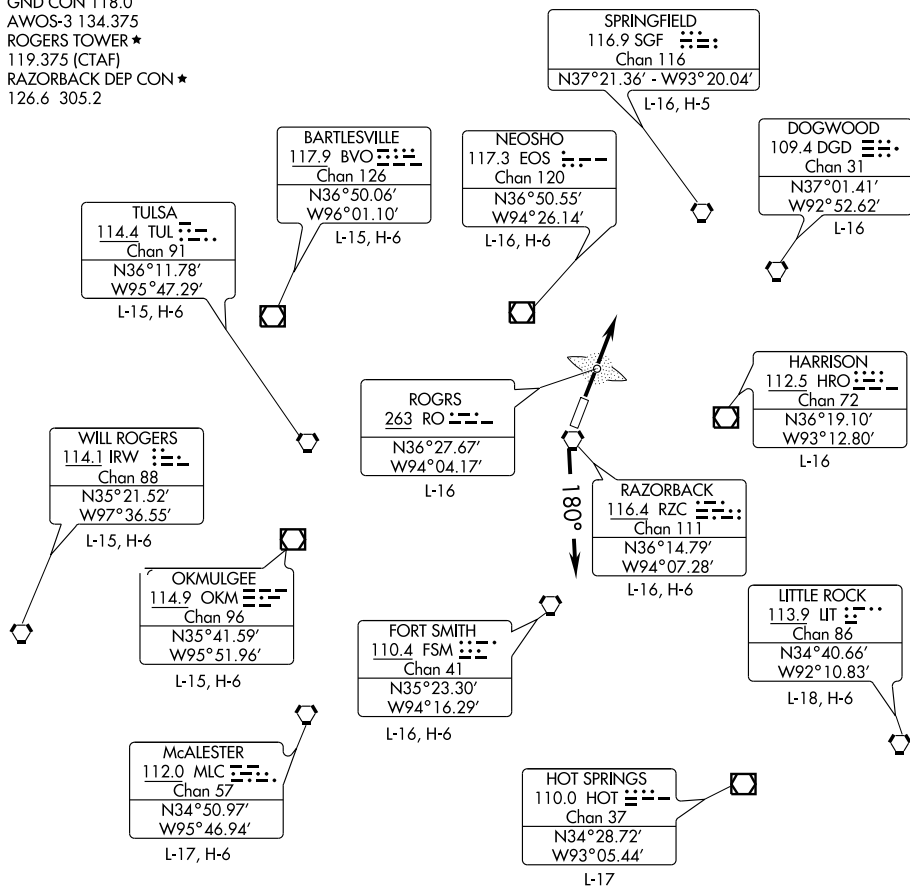


CLNC DEL 121.75
GND CON 118.0
AWOS-3 134.375
ROGERS TOWER ★
119.375 (CTAF)
RAZORBACK DEP CON ★
126.6 305.2



Note: Chart not to scale



DEPARTURE ROUTE DESCRIPTION

All aircraft cleared as filed.

TAKE-OFF RUNWAY 2: Fly runway heading. Thence. . .

TAKE-OFF RUNWAY 20: Turn left heading 180°. Thence. . .

. . . Expect radar vectors to filed/assigned route. Climb and maintain 3000 feet.

Expect clearance to filed altitude/flight level ten minutes after departure.

LOST COMMUNICATIONS: If communications are not established within 2 minutes after departure, climb and maintain 5000 feet and proceed direct RO LOM, then proceed on course.

SC-1, 11 MAR 2010 to 08 APR 2010

SC-1, 11 MAR 2010 to 08 APR 2010