

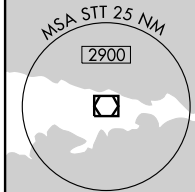
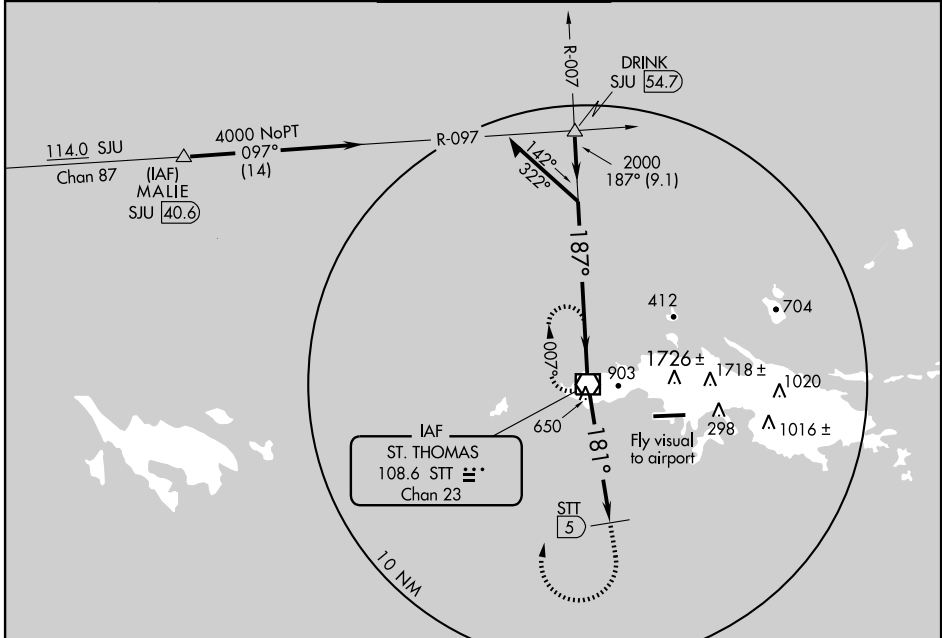
VOR/DME STT 108.6 Chan 23	APP CRS 181°	Rwy Idg TDZE Apt Elev	N/A N/A 23
---	------------------------	-----------------------------	---------------------------------------

VOR-A

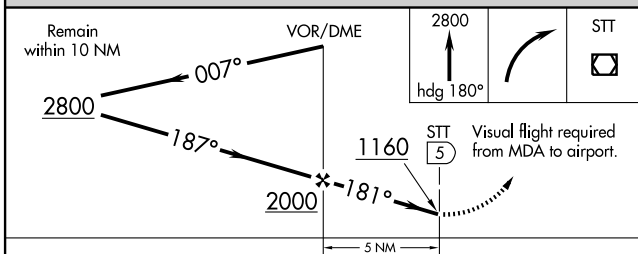
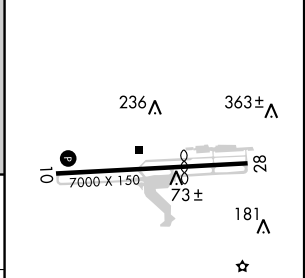
CHARLOTTE AMALIE/CYRIL E. KING (STT)(TIST)

<p>⚠ CAUTION: High terrain North of runway 10-28 extended. ⚠ Circling North of runway 10-28 not authorized. Procedure NA when control tower not in operation. Procedure NA at night.</p>	<p>MISSED APPROACH: If unable to proceed visually to airport upon descent to 1160, climb to 2800 via heading 180°, then right turn direct STT VOR/DME and hold.</p>
---	--

ATIS 124.0	SAN JUAN CENTER 128.65 279.6	ST. THOMAS TOWER ★ 118.8 (CTAF) 0 257.6 118.1 (NORTH OF ISLAND)	GND CON 121.9	UNICOM 122.95
----------------------	--	---	-------------------------	-------------------------



ELEV 23 **D**



CATEGORY	A	B	C	D
CIRCLING	1160-2	1145 (1200-2)	1160-3	1145 (1200-3)

REIL Rwy 10
MIRL Rwy 10-28 **0**

VOR-A

SE-3, 11 MAR 2010 to 08 APR 2010

SE-3, 11 MAR 2010 to 08 APR 2010