

# RNAV (GPS) RWY 10

CHRISTIANSTED, ST. CROIX/HENRY E. ROHLSEN (STX)(TISX)

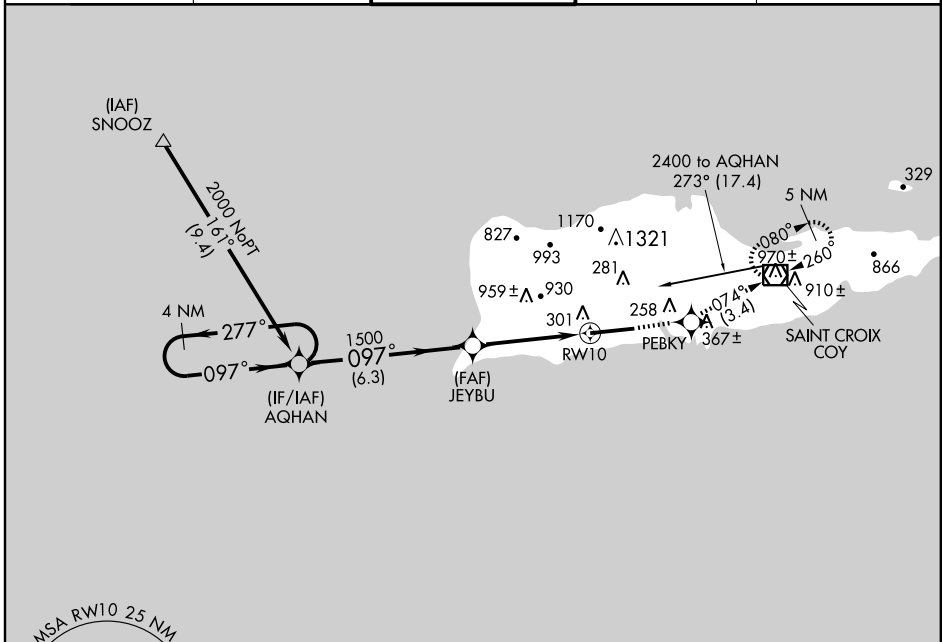
APP CRS <b>097°</b>	Rwy Idg <b>9000</b>
	TDZE <b>74</b>
	Apt Elev <b>74</b>

**⚠** Circling NA N of Rwy 10-28. If local altimeter setting not received, procedure NA.  
DME/DME RNP-0.3 NA.

**MALSRL**

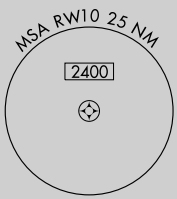
**MISSED APPROACH:** Climb to 2400 direct PEBKY and via 074° track to COY VOR/DME and hold.

ATIS <b>135.65</b>	SAN JUAN CENTER <b>128.65 279.6</b>	ST. CROIX TOWER ★ <b>118.6 (CTAF) 239.3</b>	GND CON <b>121.7</b>	UNICOM <b>123.0</b>
-----------------------	--	--	-------------------------	------------------------

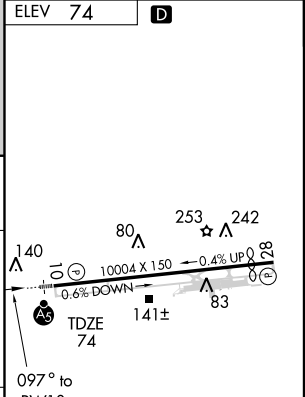
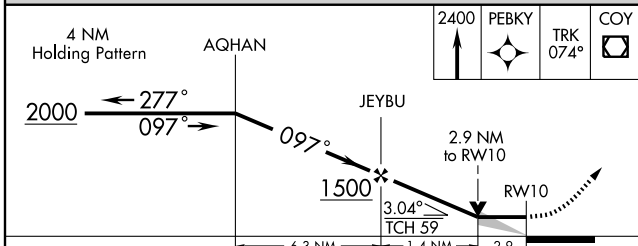


SE-3, 11 MAR 2010 to 08 APR 2010

SE-3, 11 MAR 2010 to 08 APR 2010



ELEV 74 **D**



CATEGORY	A	B	C	D
LNVA MDA	1040-3/4 966 (1000-3/4)	1040-1 966 (1000-1)	1040-2 1/2	966 (1000-2 1/2)
CIRCLING	1040-1 1/4 966 (1000-1 1/4)	1040-1 1/2 966 (1000-1 1/2)	1040-3	966 (1000-3)

REIL Rwy 28  
HIRL Rwy 10-28 **D**

# RNAV (GPS) RWY 10