

RNAV (GPS) RWY 28

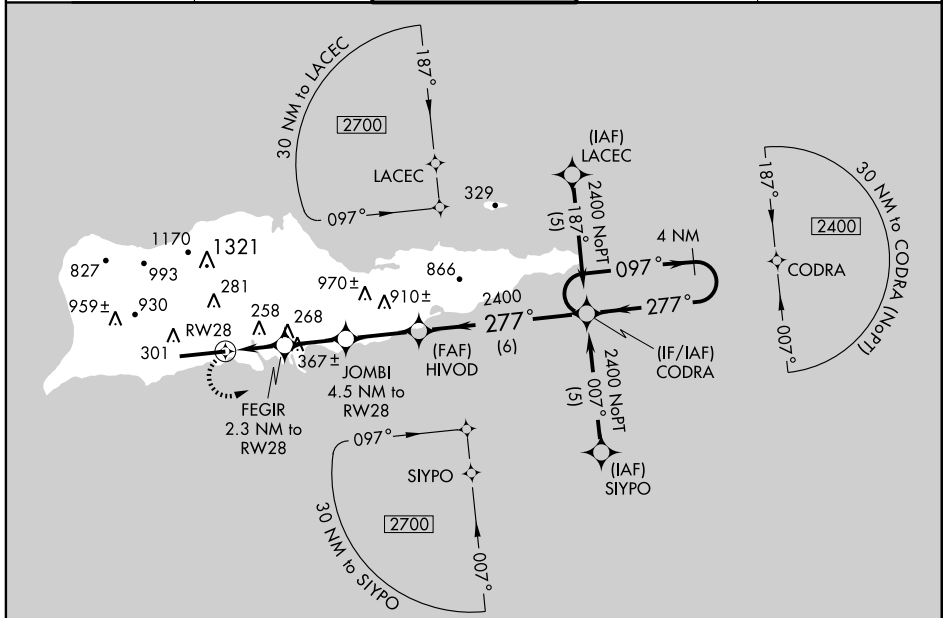
CHRISTIANSTED, ST. CROIX/HENRY E. ROHLSSEN (STX)(TISX)

APP CRS 277°	Rwy Idg 9000
	TDZE 40
	Apt Elev 74

▼ Circling NA N of Rwy 10-28. DME/DME RNP-0.3 NA. Visibility reduction by helicopters NA. When local altimeter setting not received, procedure NA.

MISSED APPROACH: Climbing left turn to 2400 direct CODRA and hold.

ATIS 135.65	SAN JUAN CENTER 128.65 279.6	ST. CROIX TOWER ★ 118.6(CTAF) 239.3	GND CON 121.7	UNICOM 123.0
-----------------------	----------------------------------------	-----------------------------------------------	-------------------------	------------------------



SE-3, 11 MAR 2010 to 08 APR 2010

SE-3, 11 MAR 2010 to 08 APR 2010

ELEV 74 **D**

REIL Rwy 28
HIRL Rwy 10-28

	2400	CODRA	JOMBI 4.5 NM to RW28	HIVOD 2.3 NM to RW28	CODRA	4 NM Holding Pattern
			FEGIR 2.3 NM to RW28			
			RW28	RW28		
			1520	800	277°	2400
			1.4 NM to RW28	2.2	097°	2400
			0.9	2.6 NM	← 277°	
CATEGORY	A	B	C	D		
LNAV MDA	560-1	520 (500-1)	560-1½ 520 (500-1½)	560-1¾ 520 (500-1¾)		
CIRCLING	560-1	486 (500-1)	560-1½ 486 (500-1½)	640-2 566 (600-2)		

VGSI and descent angles not coincident.

RNAV (GPS) RWY 28