

ILS or LOC RWY 10

CHRISTIANSTED, ST. CROIX/HENRY E. ROHLSEN (STX)(TISX)

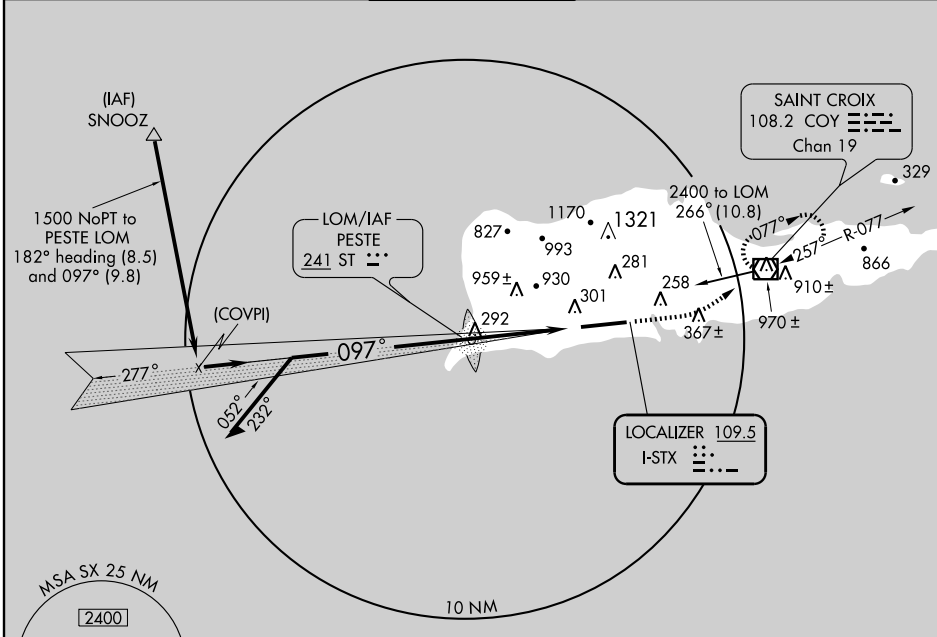
LOC I-STX 109.5	APP CRS 097°	Rwy ldg 9000 TDZE 74 Apt Elev 74
---------------------------	------------------------	---

⚠ Circling NA N of Rwy 10-28. If local altimeter setting not received, procedure NA. For inoperative MALSR, increase S-LOC 10 Cat. D visibility to 1.



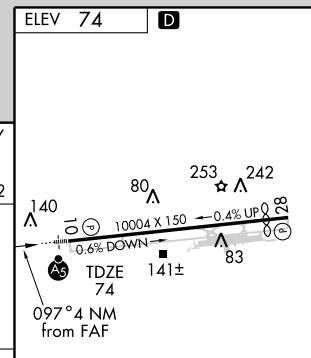
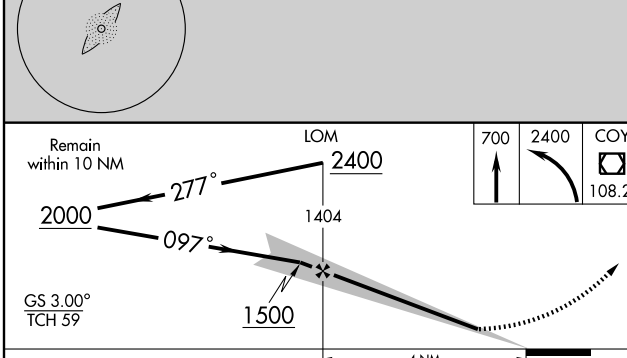
MISSED APPROACH: Climb to 700 then climbing left turn to 2400 direct COY VOR/DME and hold, continue climb-in-hold to 2400.

ATIS 135.65	SAN JUAN CENTER 128.65 279.6	ST. CROIX TOWER ★ 118.6 (CTAF) 239.3	GND CON 121.7	UNICOM 123.0
-----------------------	--	--	-------------------------	------------------------



SE-3, 11 MAR 2010 to 08 APR 2010

SE-3, 11 MAR 2010 to 08 APR 2010



CATEGORY	A	B	C	D
S-ILS 10	274-½ 200 (200-½)			
S-LOC 10	400-½	326 (400-½)	400-¾ 326 (400-¾)	
CIRCLING	440-1 366 (400-1)	540-1 466 (500-1)	540-1½ 466 (500-1½)	640-2 566 (600-2)

ELEV 74	D
REIL Rwy 28 HIRL Rwy 10-28	FAF to MAP 4 NM
Knots	60 90 120 150 180
Min:Sec	4:00 2:40 2:00 1:36 1:20

ILS or LOC RWY 10