

RNAV (GPS) Z RWY 10

EAST HAMPTON (HTO)

WAAS CH 40112 W10A	APP CRS 102°	Rwy Idg 4255 TDZE 55 Apt Elev 55
--	------------------------	---

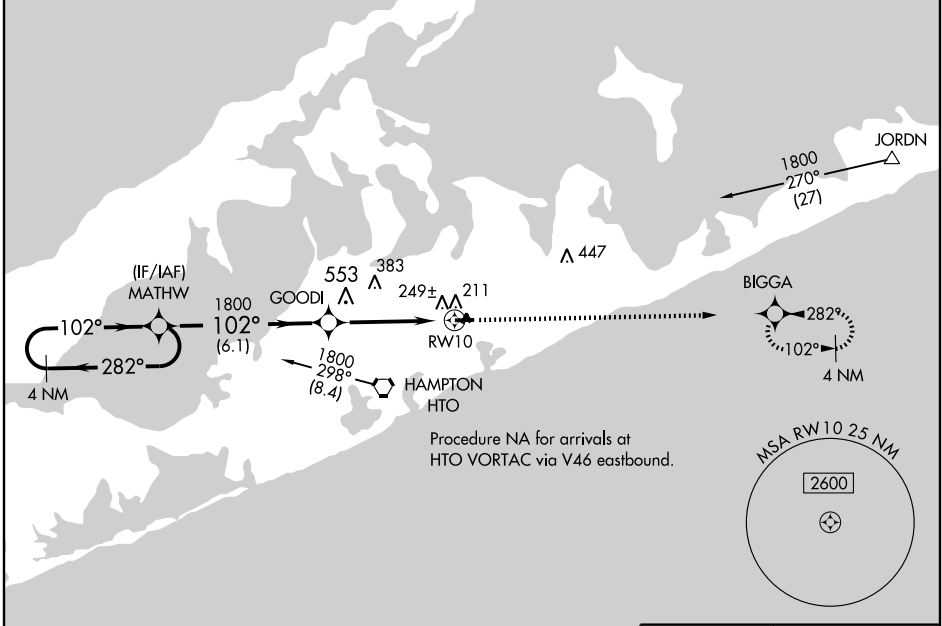
⚠ Baro-VNAV NA when using Westhampton altimeter setting.
⚠ NA For uncompensated Baro-VNAV systems, LNAV/VNAV NA below -15°C (5°F) or above 50°C (122°F). DME/DME RNP-0.3 NA. Visibility reduction by helicopters NA. Obtain local altimeter setting on CTAF; when not received, use Westhampton Beach altimeter setting.

MISSED APPROACH: Climb to 2000 direct BIGGA and hold.

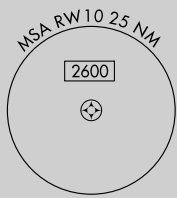
NEW YORK APP CON
125.975 343.65

CLNC DEL
118.95

UNICOM
122.7 (CTAF) 0

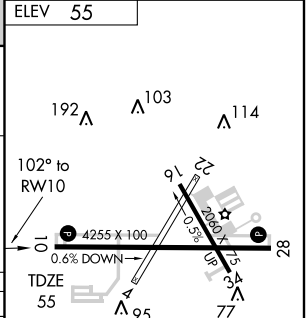
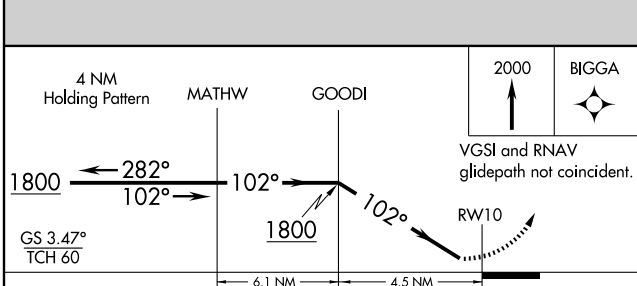


Procedure NA for arrivals at HTO VORTAC via V46 eastbound.



NE-2, 11 MAR 2010 to 08 APR 2010

NE-2, 11 MAR 2010 to 08 APR 2010



CATEGORY	A	B	C	D
LPV DA	408-1	353 (400-1)		NA
LNAV/VNAV DA	524-1½	469 (500-1½)		NA
CIRCLING	560-1½	505 (600-1½)		NA
WESTHAMPTON BEACH ALTIMETER SETTING MINIMUMS				
LPV DA	453-1¼	398 (400-1¼)		NA
LNAV/VNAV DA	569-1½	514 (600-1½)		NA
CIRCLING	600-1½	545 (600-1½)		NA

ELEV 55

2000

BIGGA

VGSIs and RNAV glidepath not coincident.

192 Δ Δ 103 Δ 114 Δ

102° to RWY 10

4255 X 100

0.6% DOWN

TDZE 55

Δ 95 Δ 77

MIRL Rwy 10-28 0

REIL Rwy 10 and 28 0