

RNAV (GPS) RWY 16

NEW IBERIA/ACADIANA RGNL (A.R.A.)

WAAS CH 82501 W16A	APP CRS 165°	Rwy Idg 8002 TDZE 24 Apt Elev 24
--	------------------------	---

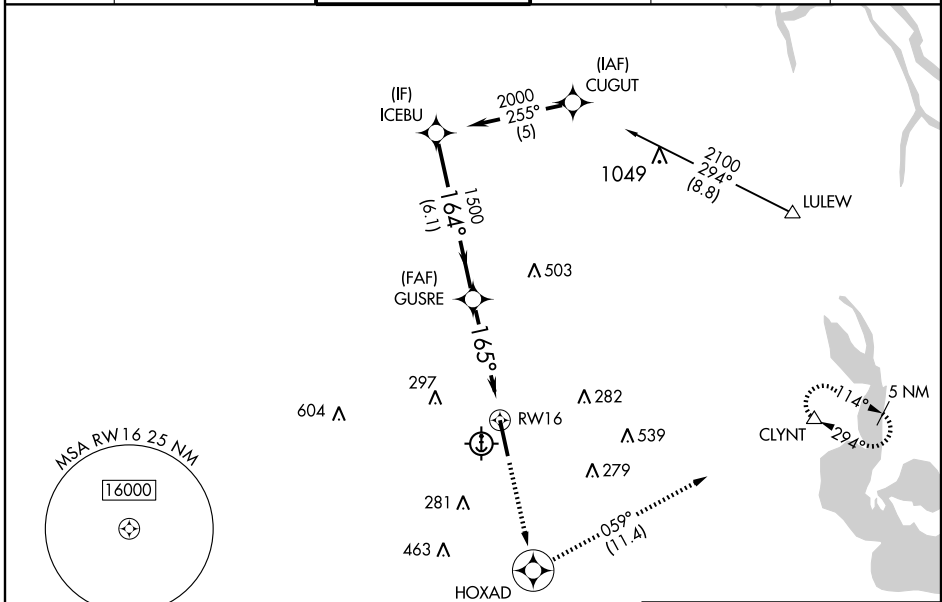
▼ DME/DME RNP-0.3 NA. Visibility reduction by helicopters NA. For uncompensated BARO-VNAV system, LNAV/VNAV NA below -15°C (5°F) or above 48°C (119°F).

▲ When local altimeter setting not received, use Lafayette altimeter setting and increase all DA/MDA 40 feet and increase visibility LNAV Cat D ¼ mile. BARO-VNAV NA when using Lafayette altimeter setting. Inoperative table does not apply.

ODALS

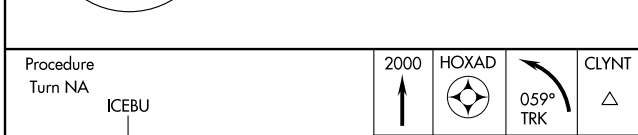
MISSED APPROACH:
Climb to 2000 direct HOXD and left turn via 059° track to CLYNT and hold.

ASOS 133.325	LAFAYETTE APP CON* 121.1 268.7	ACADIANA TOWER* 125.0 (CTAF) 239.3	GND CON 121.7	CLNC DEL 121.7 122.7 *	UNICOM 122.95
------------------------	--	---	-------------------------	----------------------------------	-------------------------



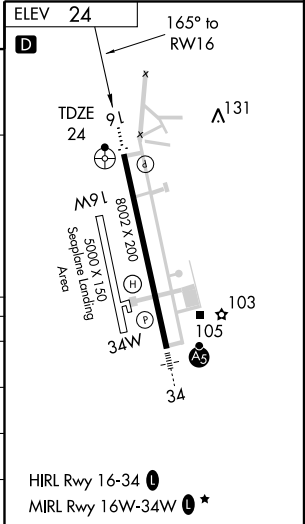
SC-4, 19 NOV 2009 to 17 DEC 2009

SC-4, 19 NOV 2009 to 17 DEC 2009



	ICEBU	GUSRE	RWY 16
	2000	1500	
	164°	165°	
	6.1 NM	4.4 NM	

CATEGORY	A	B	C	D
LPV DA		358-1¼	334 (400-1¼)	
LNAV/VNAV DA		355-1¼	331 (400-1¼)	
LNAV MDA	440-1	416 (500-1)	440-1¼	416 (500-1¼)
CIRCLING	440-1 416 (500-1)	480-1 456 (500-1)	480-1½ 456 (500-1½)	580-2 556 (600-2)



HIRL Rwy 16-34 **1**
MIRL Rwy 16W-34W **0** *