

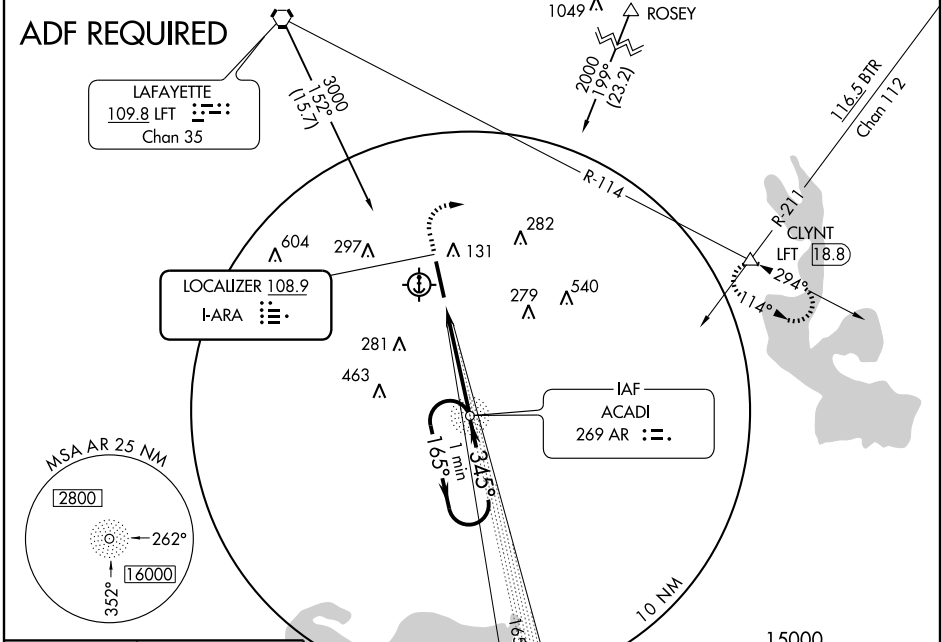
ILS RWY 34

NEW IBERIA/ACADIANA RGNL (A.A)

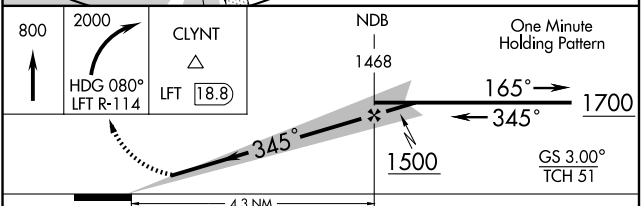
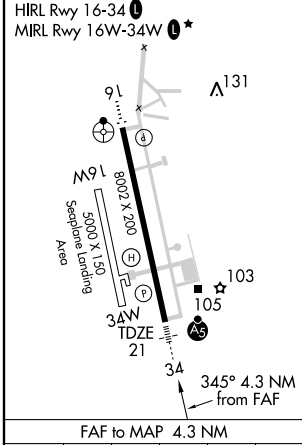
LOC I-ARA 108.9	APP CRS 345°	Rwy Idg TDZE Apt Elev	8002 21 24
---------------------------	------------------------	-----------------------------	---------------------------------------

▲ When control tower closed, use Lafayette Rgnl altimeter setting. **MALSR** MISSED APPROACH: Climb to 800 then climbing right turn to 2000 via heading 080° and LFT R-114 to CLYNT Int/LFT 18.8 DME and hold.

LAFAYETTE APP CON* 121.1 268.7	ACADIANA TOWER* 125.0 (CTAF) 239.3	GND CON 121.7	CLNC DEL 121.7 122.7 0*	UNICOM 122.95
--	--	-------------------------	-----------------------------------	-------------------------



ELEV 24	D
---------	----------



CATEGORY	A	B	C	D
S-ILS 34	221-½ 200 (200-½)			
S-LOC 34	380-½	359 (400-½)	380-¾ 359 (400-¾)	
CIRCLING	460-1 436 (500-1)	480-1 456 (500-1)	480-1½ 456 (500-1½)	580-2 556 (600-2)
LAFAYETTE RGNL ALTIMETER SETTING MINIMUMS				
S-ILS 34	250-½ 229 (300-½)			
S-LOC 34	400-½	379 (400-½)	400-¾ 379 (400-¾)	
CIRCLING	460-1 436 (500-1)	520-1 496 (500-1)	520-1½ 496 (500-1½)	620-2 596 (600-2)

FAF to MAP 4.3 NM	Knots	60	90	120	150	180
	Min:Sec	4:18	2:52	2:09	1:43	1:26

SC-4, 11 MAR 2010 to 08 APR 2010

SC-4, 11 MAR 2010 to 08 APR 2010