

WAAS CH <b>45801</b> <b>W02A</b>	APP CRS <b>026°</b>	Rwy Idg TDZE Apt Elev	<b>5000</b> <b>949</b> <b>957</b>
--	------------------------	-----------------------------	---

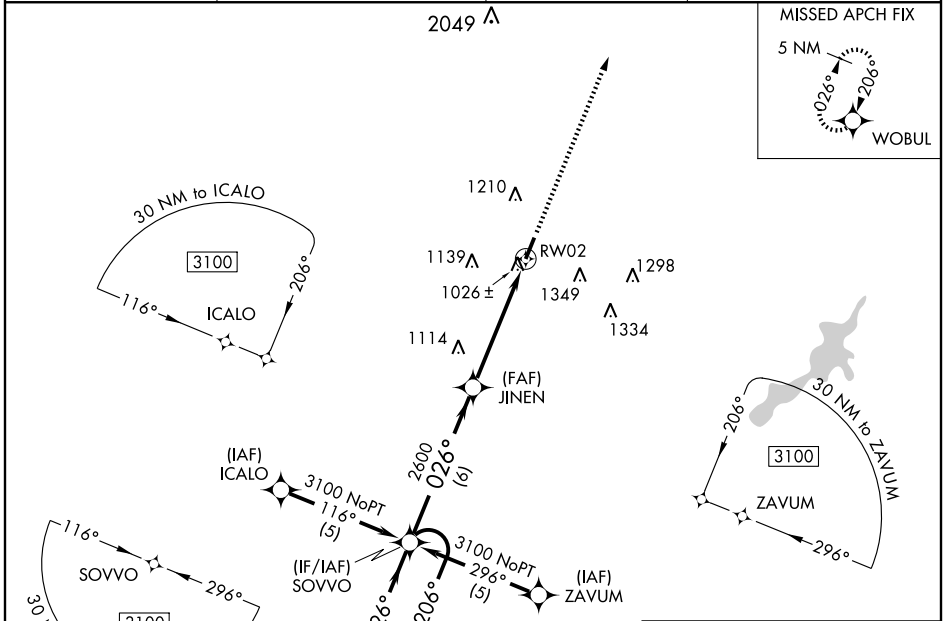
# RNAV (GPS) RWY 2

DAYTON-WRIGHT BROTHERS (MGY)

**Baro-VNAV NA** when using James M Cox Dayton Intl altimeter setting. For uncompensated Baro-VNAV systems, LNAV/VNAV NA below -16°C (4°F) or above 47°C (116°F). DME/DME RNP-0.3 NA. Visibility reduction for helicopters NA. If local altimeter setting not received, use James M Cox Dayton Intl altimeter setting and increase all DAs/MDAs 60 feet.

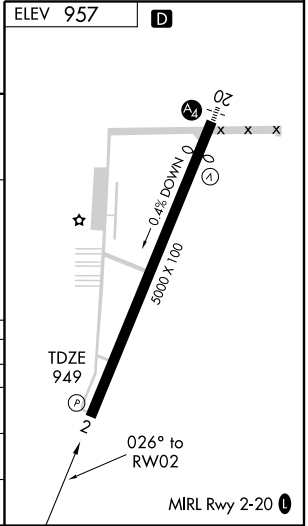
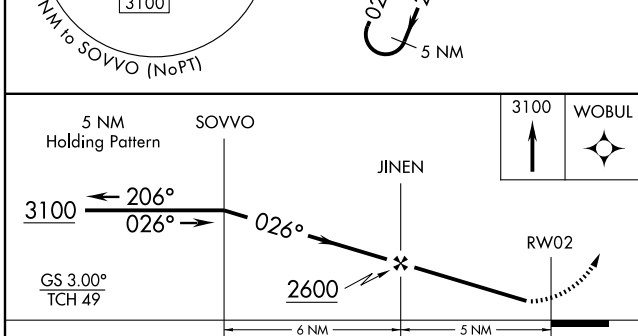
**MISSED APPROACH:** Climb to 3100 direct WOBUL and hold.

ASOS <b>118.375</b>	DAYTON APP CON <b>118.85 127.225 327.1</b>	CLNC DEL <b>119.4</b>	UNICOM <b>122.8</b> (CTAF) <b>U</b>
------------------------	---	--------------------------	--



EC-2, 11 MAR 2010 to 08 APR 2010

EC-2, 11 MAR 2010 to 08 APR 2010



CATEGORY	A	B	C	D
LPV DA		1214-1	265 (300-1)	
LNAV/VNAV DA		1299-1¼	350 (400-1½)	
LNAV MDA	1420-1	471 (500-1)	1420-1¼ 471 (500-1½)	1420-1½ 471 (500-1½)
CIRCLING	1480-1¼	523 (600-1¼)	1520-1½ 563 (600-1½)	1660-2¼ 703 (800-2¼)