

DAYTON, OHIO

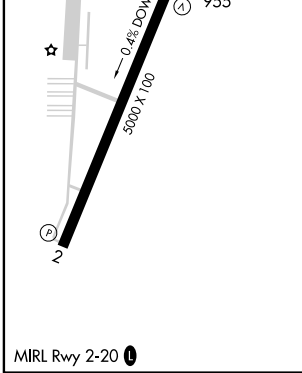
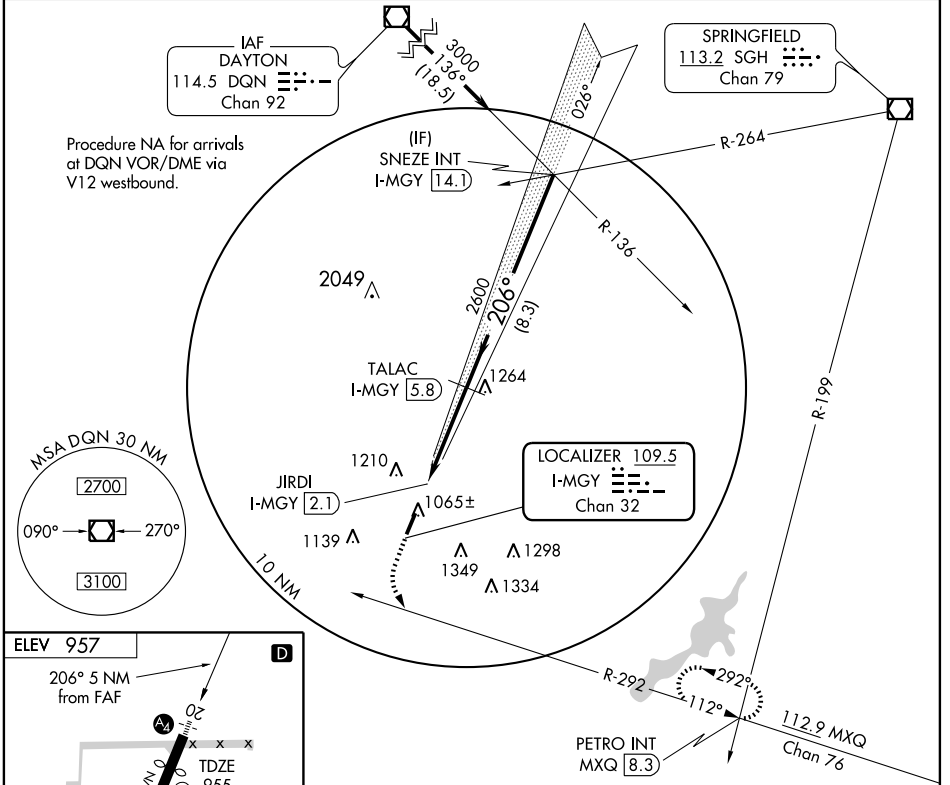
AL-5042 (FAA)

LOC/DME I-MGY 109.5 Chan 32	APP CRS 206°	Rwy Idg 4410 TDZE 955 Apt Elev 957
-------------------------------------------------	------------------------	---------------------------------------------------------------

LOC/DME RWY 20

DAYTON-WRIGHT BROTHERS (MGY)

<p>▼ Inoperative table does not apply. Visibility reduction by helicopters NA. If local altimeter setting not received, use James M Cox Dayton Intl altimeter setting and increase all MDAs 60 feet.</p> <p>▲ NA</p>	<p>MALSF ▲</p>	<p>MISSED APPROACH: Climb to 1600 then climbing left turn to 3000 via heading 118° and MXQ VOR/DME R-292 to PETRO Int/MXQ 8.3 DME and hold.</p>	
<p>ASOS 118.375</p>	<p>DAYTON APP CON 118.85 127.225 327.1</p>	<p>CLNC DEL 119.4</p>	<p>UNICOM 122.8 (CTAF) 0</p>



1600	3000	PETRO INT MXQ 8.3	TALAC I-MGY 5.8	SNEZE INT I-MGY 14.1
↑	HDG 118° MXQ R-292 112.9			3000
	JIRDI I-MGY 2.1	2600	Procedure Turn NA	
	≤ 3.04° TCH 40		VGSI and descent angles not coincident.	
	1.2	3.7 NM	8.3 NM	
CATEGORY	A	B	C	D
S-20		1320-1½	365 (400-1½)	
CIRCLING	1480-1½	523 (600-1½)	1520-1½ 563 (600-1½)	1660-2¼ 703 (800-2¼)

DAYTON, OHIO
Orig 09183

39°35'N - 84°13'W

DAYTON-WRIGHT BROTHERS (MGY) LOC/DME RWY 20

EC-2, 11 MAR 2010 to 08 APR 2010

EC-2, 11 MAR 2010 to 08 APR 2010