

DAYTON, OHIO

AL-5042 (FAA)

**NDB-A**

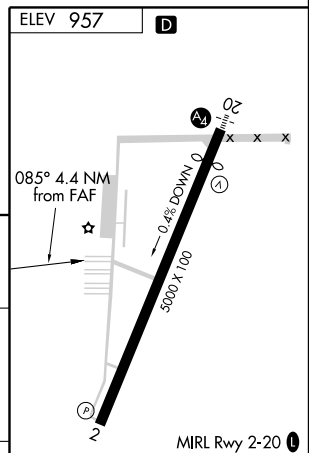
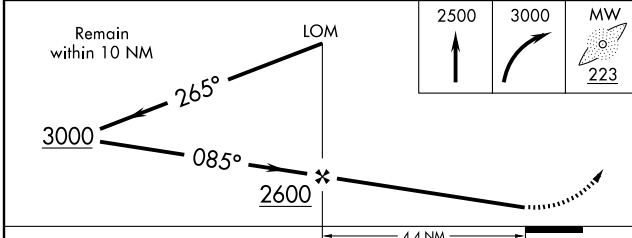
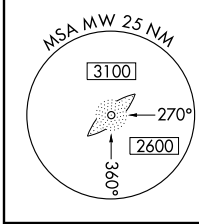
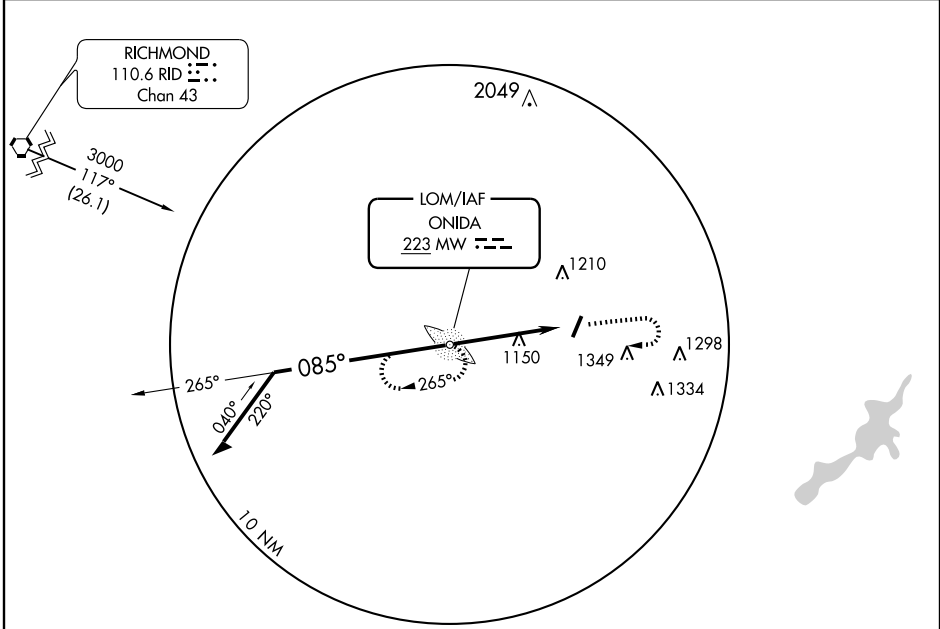
DAYTON-WRIGHT BROTHERS (MGY)

LOM MW <b>223</b>	APP CRS <b>085°</b>	Rwy Idg TDZE Apt Elev	<b>N/A</b> <b>N/A</b> <b>957</b>
----------------------	------------------------	-----------------------------	--

**NA** If local altimeter setting not received, use James M Cox Dayton Intl altimeter setting and increase all MDAs 60 feet.

MISSED APPROACH: Climb to 2500, then climbing right turn to 3000 direct MW LOM and hold.

ASOS <b>118.375</b>	DAYTON APP CON <b>118.85 127.225 327.1</b>	CLNC DEL <b>119.4</b>	UNICOM <b>122.8</b> (CTAF) <b>D</b>
------------------------	---	--------------------------	--



CATEGORY	A	B	C	D	FAF to MAP 4.4 NM					
CIRCLING	1480-1	523 (600-1)	1520-1½ 563 (600-1½)	1660-2¼ 703 (800-2¼)	Knots	60	90	120	150	180
					Min:Sec	4:24	2:56	2:12	1:46	1:28

DAYTON, OHIO  
Amdt 2 09183

39°35'N - 84°13'W

DAYTON-WRIGHT BROTHERS (MGY)

**NDB-A**

EC-2, 11 MAR 2010 to 08 APR 2010

EC-2, 11 MAR 2010 to 08 APR 2010