

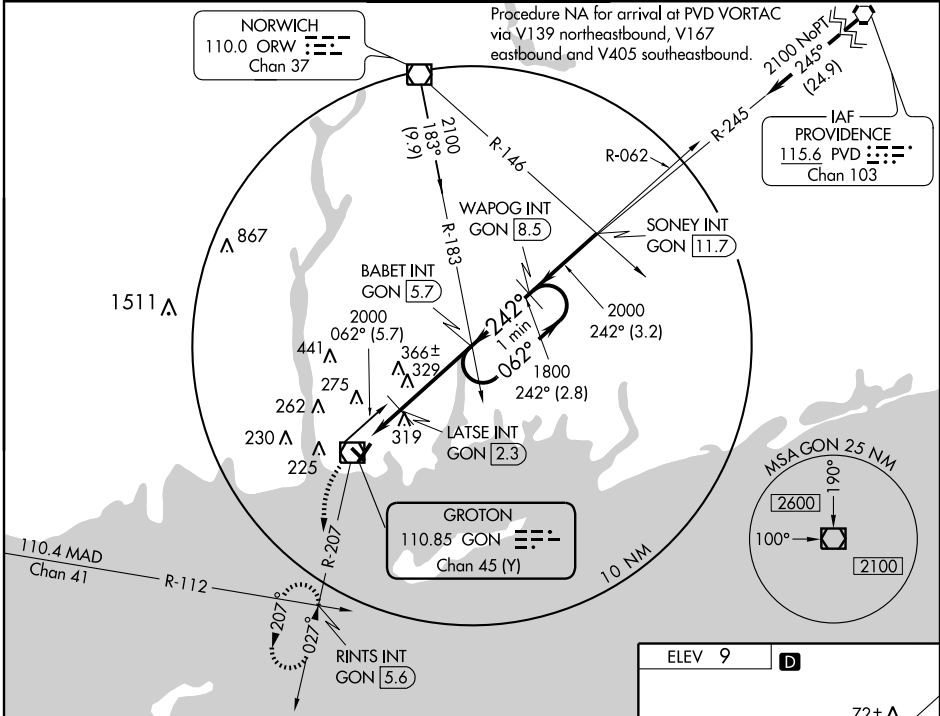
VOR/DME GON 110.85 Chan 45 (Y)	APP CRS 242°	Rwy Idg TDZE Apt Elev	5000 8 9
--	------------------------	-----------------------------	-------------------------------------

VOR RWY 23

GROTON-NEW LONDON (GON)

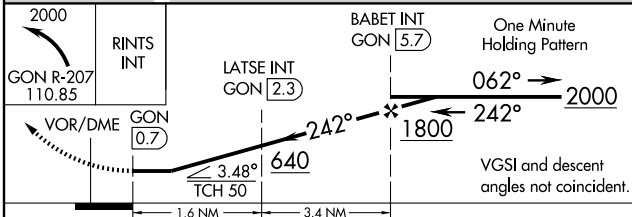
MISSED APPROACH: Climbing left turn to 2000 via GON R-207 to RINTS Int/GON 5.6 DME and hold.

ATIS 127.0	PROVIDENCE APP CON * 125.75 319.2	GROTON TOWER * 125.6 (CTAF) 0 352.8	GND CON 121.65 352.8	CLNC DEL * 119.85
----------------------	---	---	--------------------------------	-----------------------------

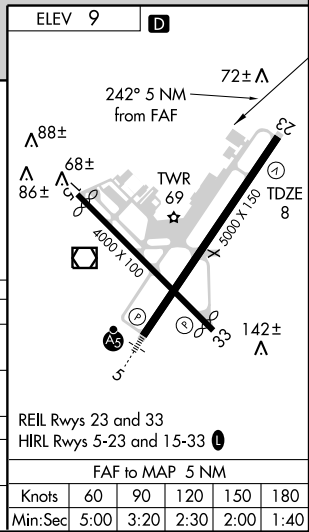


NE-1, 19 NOV 2009 to 17 DEC 2009

NE-1, 19 NOV 2009 to 17 DEC 2009



CATEGORY	A	B	C	D
S-23	640-1	632 (700-1)	640-1¼ 632 (700-1¼)	640-2 632 (700-2)
CIRCLING	640-1	631 (700-1)	640-1¼ 631 (700-1¼)	640-2 631 (700-2)
LATSE FIX MINIMUMS				
S-23	580-1	572 (600-1)	580-1½ 572 (600-1½)	580-1¼ 572 (600-1¼)
CIRCLING	580-1 571 (600-1)	620-1 611 (700-1)	620-1¼ 611 (700-1¼)	620-2 611 (700-2)



REIL Rwy 23 and 33
HIRL Rwy 5-23 and 15-33

FAF to MAP 5 NM					
Knots	60	90	120	150	180
Min:Sec	5:00	3:20	2:30	2:00	1:40