

OCALA, FLORIDA

AL-5055 (FAA)

RNAV (GPS) RWY 18

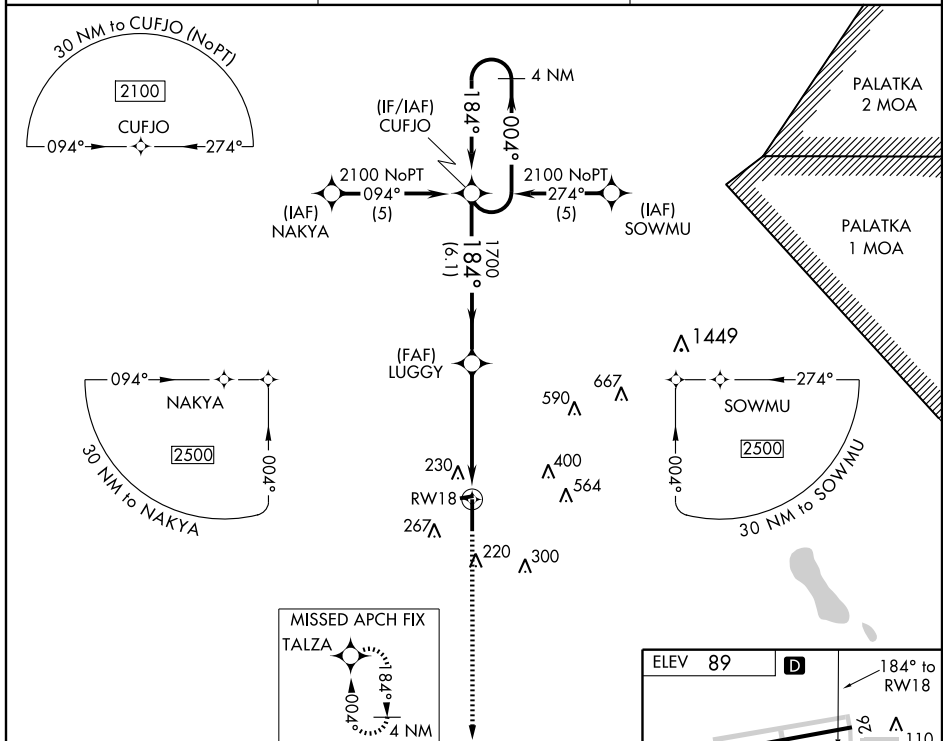
OCALA INTL-JIM TAYLOR FIELD (OCF)

APP CRS	Rwy Idg	6747
184°	TDZE	81
	Apt Elev	89

⚠ For uncompensated Baro-VNAV systems, LNAV/VNAV NA below -15°C (5°F) or above 48°C (118°F). DME/DME RNP-0.3 NA. Visibility reduction by helicopters NA. When local altimeter setting not received, use Gainesville altimeter setting and increase LNAV/VNAV DA to 657 and all MDA 100 feet; increase LNAV/VNAV all Cats, LNAV Cats C and D, and Circling Cat D visibility ¼ mile. Baro-VNAV and VDP NA when using Gainesville altimeter setting.

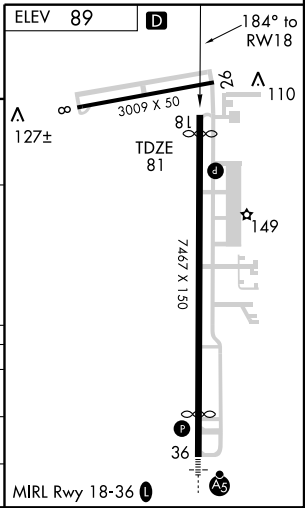
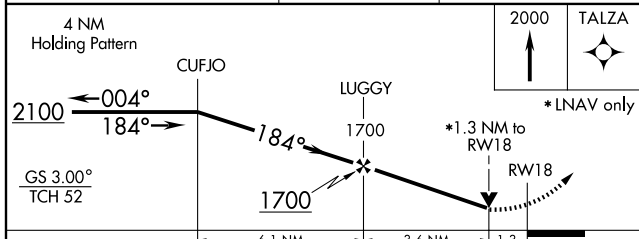
MISSED APPROACH:
Climb to 2000 direct TALZA and hold.

AWOS-3 128.125	JACKSONVILLE APP CON 118.6 251.15	UNICOM 123.0 (CTAF)
--------------------------	---	-------------------------------



SE-3, 11 MAR 2010 to 08 APR 2010

SE-3, 11 MAR 2010 to 08 APR 2010



CATEGORY	A	B	C	D
LNAV/VNAV DA	576-1¾		495 (500-1¾)	
LNAV MDA	540-1	459 (500-1)	540-1½ 459 (500-1½)	540-1½ 459 (500-1½)
CIRCLING	580-1	491 (500-1)	580-1½ 491 (500-1½)	640-2 551 (600-2)

OCALA, FLORIDA
Amdt 1 09295

29° 10'N - 82° 13'W

OCALA INTL-JIM TAYLOR FIELD (OCF)
RNAV (GPS) RWY 18