

HENDERSON, KENTUCKY

AL-5059 (FAA)

# NDB RWY 9

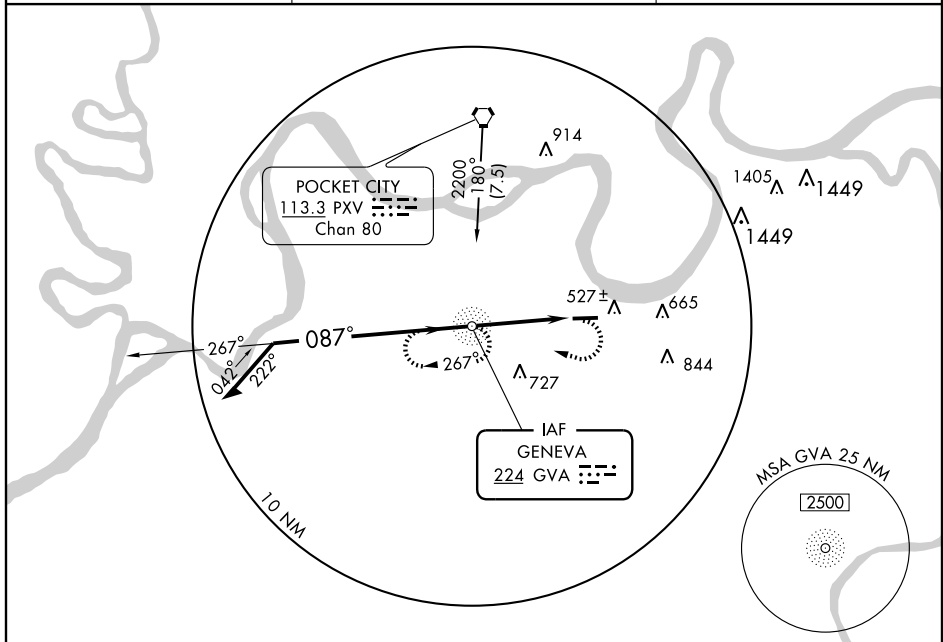
HENDERSON CITY-COUNTY (E.H.R.)

NDB GVA <b>224</b>	APP CRS <b>087°</b>	Rwy Idg <b>5504</b>
		TDZE <b>386</b>
		Apt Elev <b>386</b>

**▲** NA If local altimeter setting not received, use Evansville altimeter setting and increase all MDA's 80 feet.

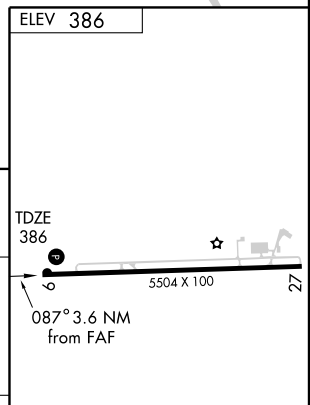
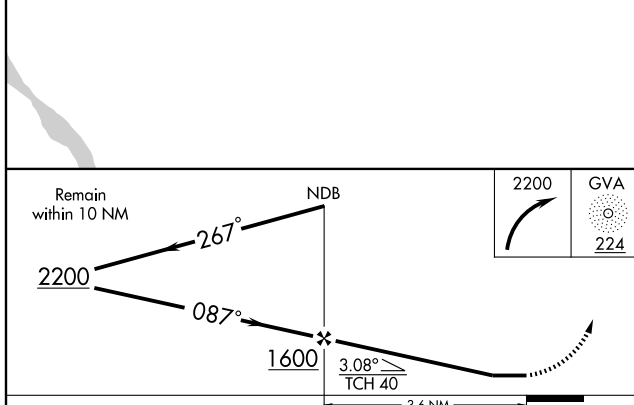
MISSED APPROACH: Climbing right turn to 2200 direct GVA NDB and hold.

AWOS-3 <b>128.175</b>	EVANSVILLE APP CON ★ <b>126.4 257.8</b>	UNICOM <b>122.8</b> (CTAF) <b>0</b>
--------------------------	--	--



SE-1, 19 NOV 2009 to 17 DEC 2009

SE-1, 19 NOV 2009 to 17 DEC 2009



CATEGORY	A	B	C	D
S-9	900-1 514 (600-1)		900-1½ 514 (600-1½)	900-1¾ 514 (600-1¾)
CIRCLING	900-1 514 (600-1)		900-1½ 514 (600-1½)	940-2 554 (600-2)

REIL Rwys 9 and 27 **0**  
MIRL Rwy 9-27 **0**

FAF to MAP 3.6 NM

Knots	60	90	120	150	180
Min:Sec	3:36	2:24	1:48	1:26	1:12

HENDERSON, KENTUCKY  
Amdt 4 09015

37°48'N - 87°41'W

# NDB RWY 9