

WAAS CH 77909 W27A	APP CRS 269°	Rwy Idg TDZE Apt Elev	5504 387 387
--	------------------------	-----------------------------	---

RNAV (GPS) RWY 27

HENDERSON CITY-COUNTY (E.H.R.)

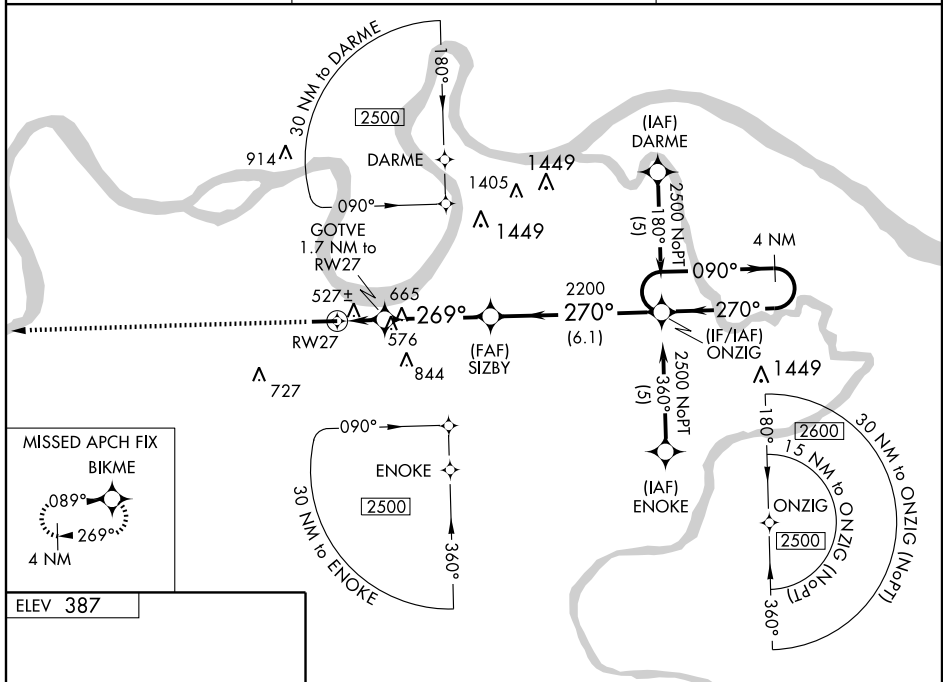
⚠ Baro-VNAV NA when using Evansville altimeter setting. For uncompensated Baro-VNAV systems, LNAV/VNAV NA below -15°C (5°F) or above 48°C (118°F). DME/DME RNP-0.3 NA. Visibility reduction by helicopters NA. When local altimeter setting not received, use Evansville altimeter setting and increase all DA 41 feet and all MDA 60 feet and LPV all Cats, LNAV/VNAV all Cats and LNAV Cats C/D visibilities ¼ mile.

MISSED APPROACH: Climb to 2500 direct BIKME and hold.

AWOS-3
128.175

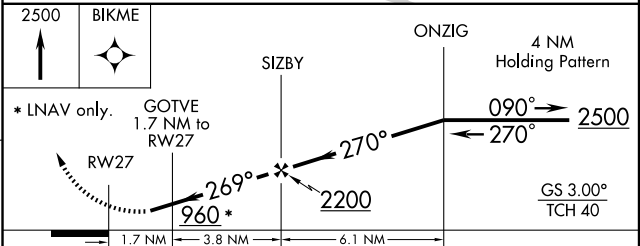
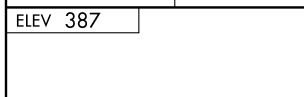
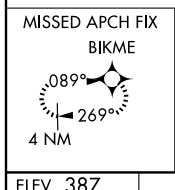
EVANSVILLE APP CON ★
126.4 257.8

UNICOM
122.8 (CTAF) **📶**



SE-1, 19 NOV 2009 to 17 DEC 2009

SE-1, 19 NOV 2009 to 17 DEC 2009



CATEGORY	A	B	C	D
LPV DA	733-1¼ 346 (400-1¼)			
LNAV/VNAV DA	827-1½ 440 (500-1½)			
LNAV MDA	840-1	453 (500-1)	840-1¼ 453 (500-1¼)	840-1½ 453 (500-1½)
CIRCLING	880-1	493 (500-1)	880-1½ 493 (500-1½)	940-2 553 (600-2)

REIL Rwy 9 and 27 **📶**
MIRL Rwy 9-27 **📶**