

RNAV (GPS) RWY 9

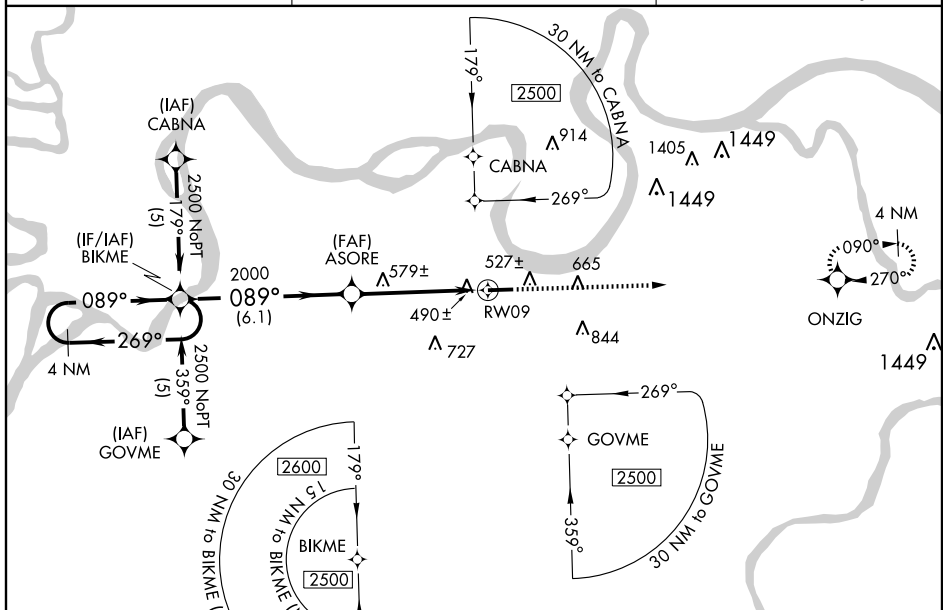
HENDERSON CITY-COUNTY (E.H.R.)

WAAS CH 97709 W09A	APP CRS 089°	Rwy Idg 5504 TDZE 385 Apt Elev 387
--	------------------------	---

⚠ DME/DME RNP-0.3 NA. For uncompensated Baro-VNAV systems, LNAV/VNAV NA below -15°C (5°F) or above 48°C (118°F). Visibility reduction by helicopters NA. Baro-VNAV and VDP NA when using Evansville altimeter setting. When local altimeter setting not received, use Evansville altimeter setting and increase all DA 41 feet and all MDA 60 feet and LPV all Cats, LNAV/VNAV all Cats and LNAV Cats C/D visibilities ¼ mile.

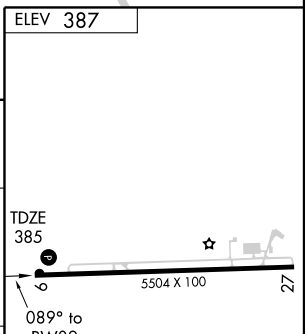
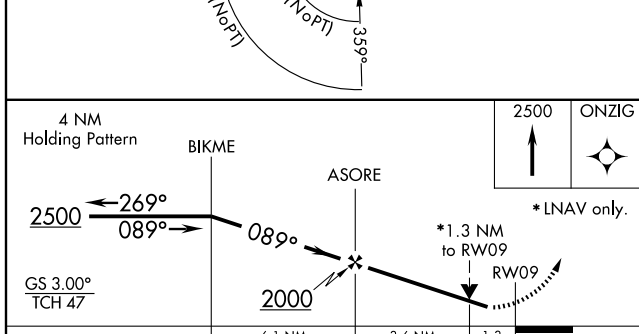
MISSED APPROACH: Climb to 2500 direct ONZIG and hold.

AWOS-3 128.175	EVANSVILLE APP CON ★ 126.4 257.8	UNICOM 122.8 (CTAF) 📶
--------------------------	--	--



SE-1, 19 NOV 2009 to 17 DEC 2009

SE-1, 19 NOV 2009 to 17 DEC 2009



CATEGORY	A	B	C	D
LPV DA	694-1 309 (400-1)			
LNAV/VNAV DA	774-1¼ 389 (400-1¼)			
LNAV MDA	840-1	455 (500-1)	840-1¼ 455 (500-1¼)	840-1½ 455 (500-1½)
CIRCLING	880-1	493 (500-1)	880-1½ 493 (500-1½)	940-2 553 (600-2)

REIL Rwy 9 and 27 **📶**
MIRL Rwy 9-27 **📶**