

HENDERSON, KENTUCKY

AL-5059 (FAA)

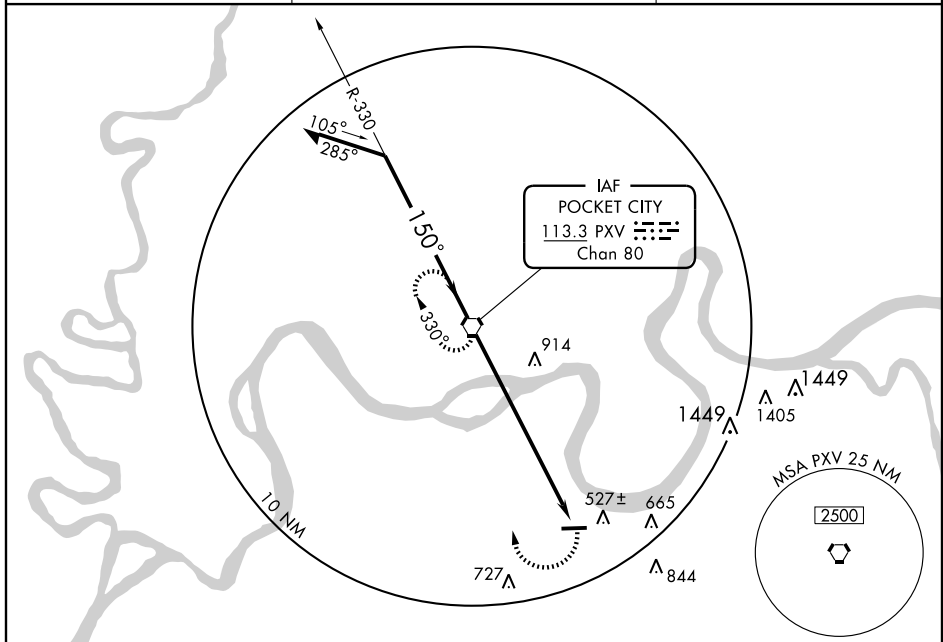
VOR-A

HENDERSON CITY-COUNTY (E.H.R.)

VORTAC PXV 113.3 Chan 80	APP CRS 150°	Rwy Idg TDZE Apt Elev	N/A N/A 386
--	------------------------	-----------------------------	--

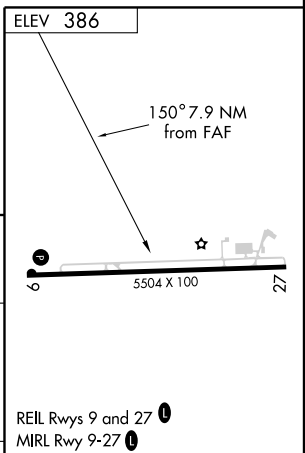
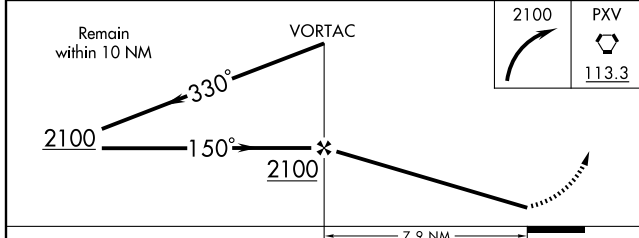
▽ If local altimeter setting not received, use Evansville altimeter setting and increase all MDA's 80 feet.
▲ NA MISSED APPROACH: Climbing right turn to 2100 direct PXV VORTAC and hold.

AWOS-3 128.175	EVANSVILLE APP CON ★ 126.4 257.8	UNICOM 122.8 (CTAF) ●
--------------------------	--	---------------------------------



SE-1, 19 NOV 2009 to 17 DEC 2009

SE-1, 19 NOV 2009 to 17 DEC 2009



CATEGORY	A	B	C	D	FAF to MAP 7.9 NM					
CIRCLING	920-1	534 (600-1)	920-1½ 534 (600-1½)	940-2 554 (600-2)	Knots	60	90	120	150	180
					Min:Seq	7:54	5:16	3:57	3:10	2:38

HENDERSON, KENTUCKY
Amdt 10 09015

37°48'N - 87°41'W

HENDERSON CITY-COUNTY (E.H.R.)

VOR-A