

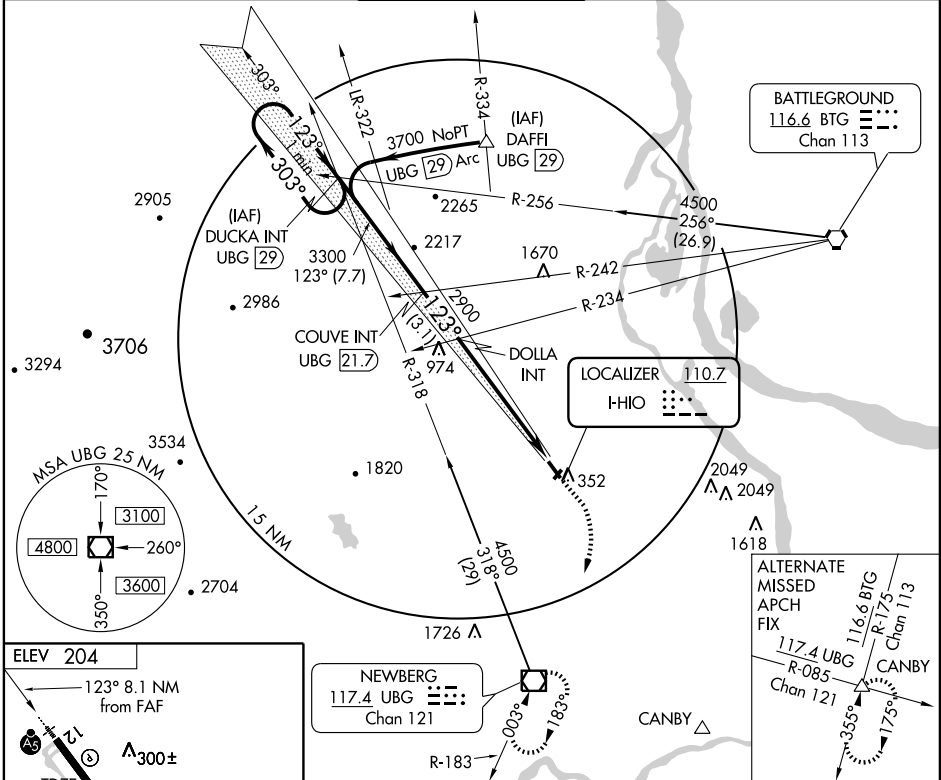
# ILS or LOC RWY 12

PORTLAND-HILLSBORO (HIO)

LOC I-HIO <b>110.7</b>	APP CRS <b>123°</b>	Rwy Idg 6600
		TDZE 199
		Apt Elev 204

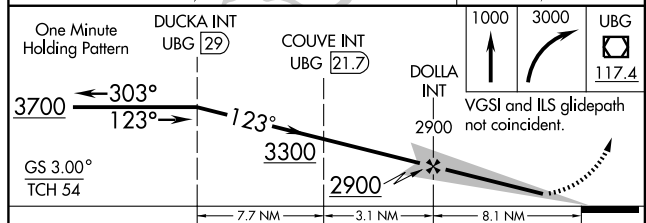
<p><b>⚠</b> DUCKA INT requires UBG VOR/DME and BTG VORTAC. If local altimeter setting not received, use Portland Intl altimeter setting and increase all DAs/MDAs 60 feet.</p>	<p>MALSR</p>	<p>MISSED APPROACH: Climb to 1000 then climbing right turn to 3000 direct UBG VOR/DME and hold.</p>
--	--------------	---

ATIS <b>127.65</b>	PORTLAND APP CON <b>126.0 284.6</b>	HILLSBORO TOWER★ <b>119.3 (CTAF) 239.3</b>	GND CON <b>121.7</b>	UNICOM <b>122.95</b>
-----------------------	--	---	-------------------------	-------------------------



NW-1, 11 MAR 2010 to 08 APR 2010

NW-1, 11 MAR 2010 to 08 APR 2010



CATEGORY	A	B	C	D
S-ILS 12	399-½ 200 (200-½)			
S-LOC 12	1140-¾ 941 (1000-¾)	1140-2¼ 941 (1000-2¼)	1140-2½ 941 (1000-2½)	1140-2½ 941 (1000-2½)
CIRCLING	1140-1¼ 936 (1000-1¼)	1140-2¾ 936 (1000-2¾)	1140-3 936 (1000-3)	1140-3 936 (1000-3)