


RNAV (GPS) RWY 12

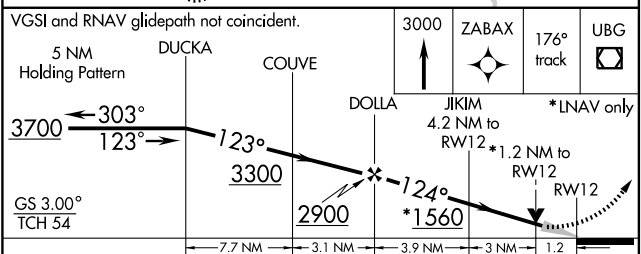
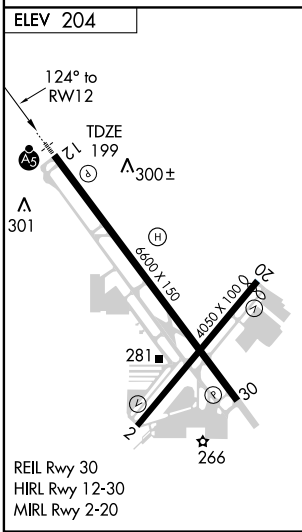
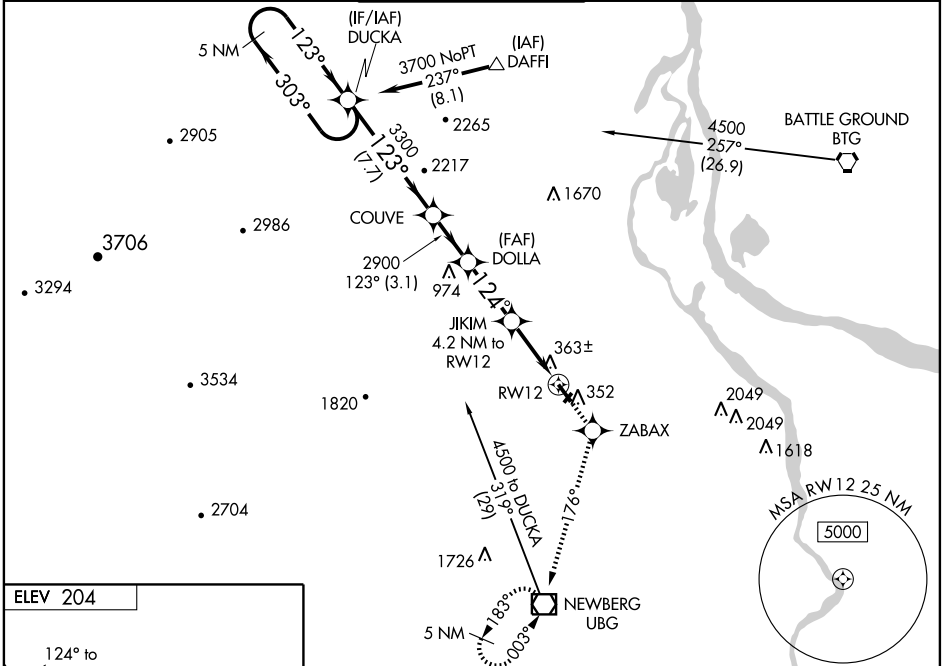
PORTLAND-HILLSBORO (HIO)

WAAS CH 69502 W12A	APP CRS 124°	Rwy Idg TDZE 199 Apt Elev 204	6600
--	------------------------	---	-------------

⚠ For uncompensated Baro-VNAV systems, LNAV/VNAV NA below -15°C (5°F) or above 49°C (120°F). DME/DME RNP-0.3 NA.
⚠ If local altimeter setting not received, use Portland Intl altimeter setting and increase all DAs/MDAs 60 feet.
 VDP NA when using Portland Intl altimeter setting.
 For inoperative MALSR, increase LPV all Cats visibility to 1½, and LNAV Cat D visibility 1½. Baro-VNAV NA when using Portland Intl altimeter setting.

MALSR

MISSED APPROACH: Climb to 3000 direct ZABAX and via 176° track to UBG VOR/DME and hold, continue climb-in-hold to 3000.

ATIS 127.65	PORTLAND APP CON 126.0 284.6	HILLSBORO TOWER* 119.3 (CTAF) 239.3	GND CON 121.7	UNICOM 122.95
-----------------------	--	---	-------------------------	-------------------------



CATEGORY	A	B	C	D
LPV DA		598-1	399 (400-1)	
LNAV/VNAV DA		651-1	452 (500-1)	
LNAV MDA	620-½	421 (500-½)	620-¾ 421 (500-¾)	620-1 421 (500-1)
CIRCLING		680-1½	476 (500-1½)	760-2 556 (600-2)

NW-1, 19 NOV 2009 to 17 DEC 2009

NW-1, 19 NOV 2009 to 17 DEC 2009