

PORTLAND, OREGON

AL-5063 (FAA)

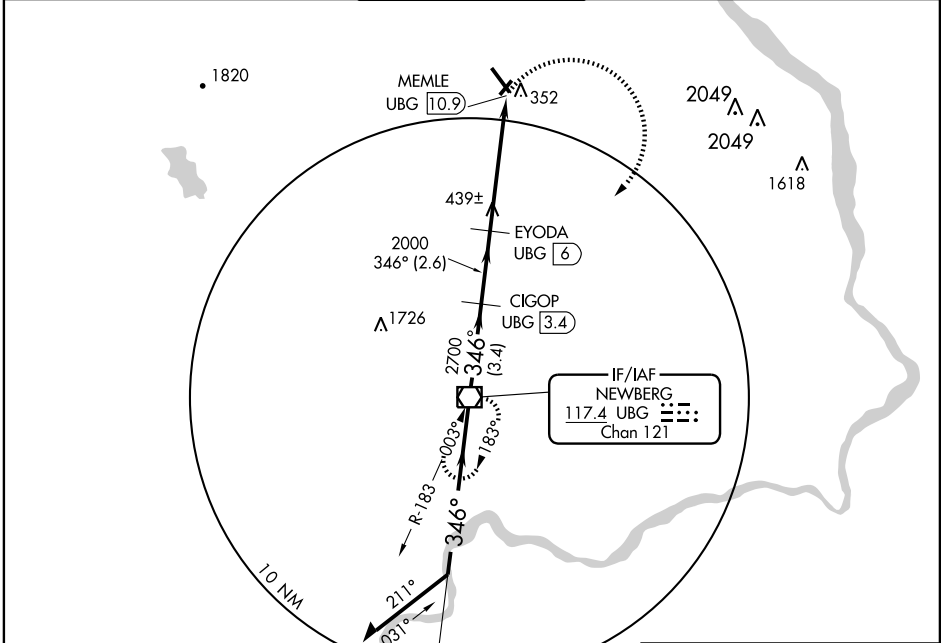
VOR/DME UBG 117.4 Chan 121	APP CRS 346°	Rwy Idg TDZE Apt Elev	N/A N/A 204
---	------------------------	-----------------------------	--

VOR/DME-C

PORTLAND-HILLSBORO (HIO)

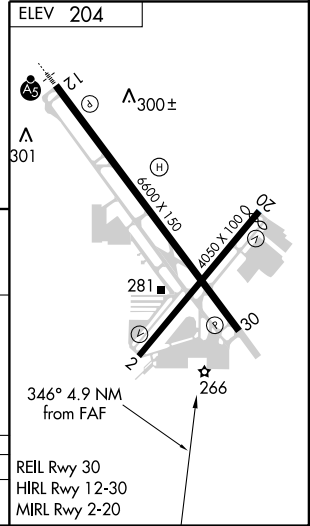
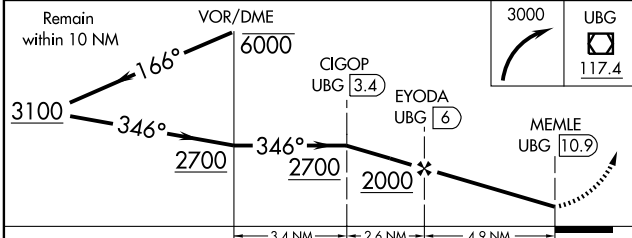
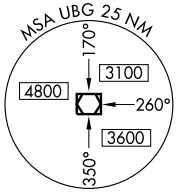
▽ MISSED APPROACH: Climbing right turn to 3000 direct UBG VOR/DME and hold.

ATIS 127.65	PORTLAND APP CON 126.0 284.6	HILLSBORO TOWER* 119.3 (CTAF) 239.3	GND CON 121.7	UNICOM 122.95
-----------------------	--	--	-------------------------	-------------------------



NW-1, 19 NOV 2009 to 17 DEC 2009

NW-1, 19 NOV 2009 to 17 DEC 2009



CATEGORY	A	B	C	D
CIRCLING	700-1	496 (500-1)	700-1½ 496 (500-1½)	760-2 556 (600-2)

PORTLAND, OREGON
Orig 09183

45°32'N-122°57'W

PORTLAND-HILLSBORO (HIO)
VOR/DME-C