


# RNAV (GPS) RWY 12

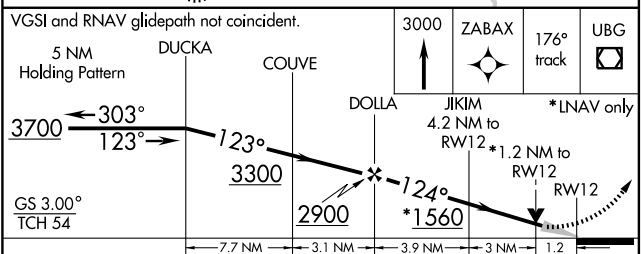
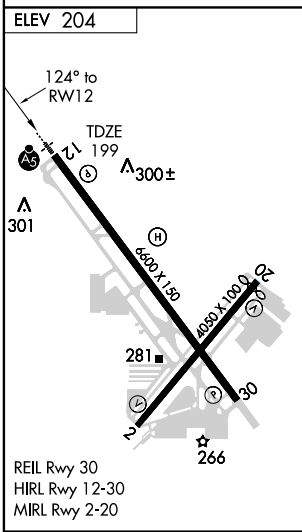
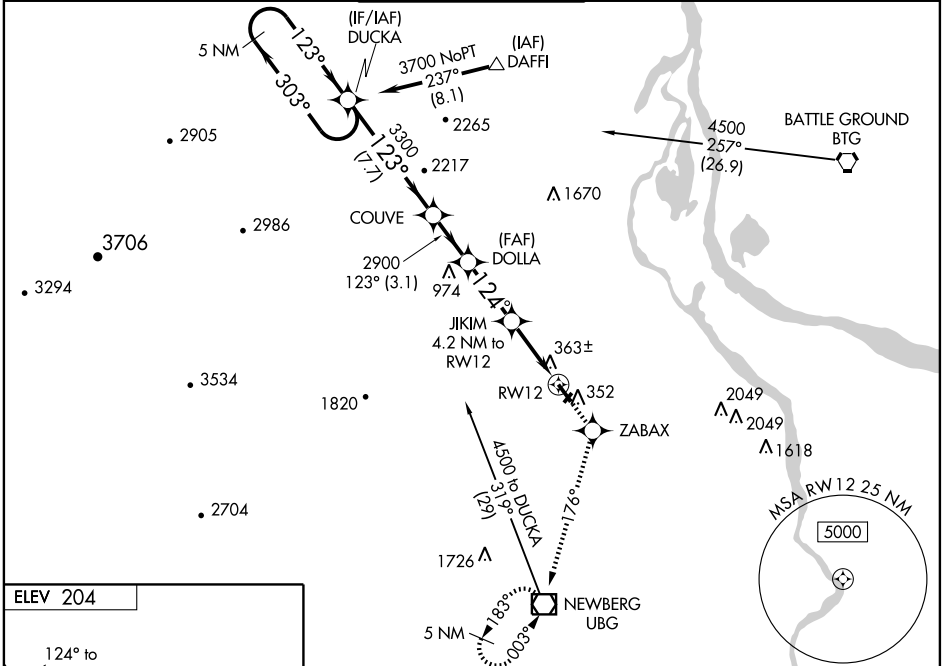
PORTLAND-HILLSBORO (HIO)

WAAS CH <b>69502</b> <b>W12A</b>	APP CRS <b>124°</b>	Rwy Idg TDZE <b>199</b> Apt Elev <b>204</b>	<b>6600</b>
--	------------------------	---	-------------

**⚠** For uncompensated Baro-VNAV systems, LNAV/VNAV NA below -15°C (5°F) or above 49°C (120°F). DME/DME RNP-0.3 NA.  
**⚠** If local altimeter setting not received, use Portland Intl altimeter setting and increase all DAs/MDAs 60 feet.  
 VDP NA when using Portland Intl altimeter setting.  
 For inoperative MALSR, increase LPV all Cats visibility to 1½, and LNAV Cat D visibility 1½. Baro-VNAV NA when using Portland Intl altimeter setting.

**MALSR**  
  
**MISSED APPROACH:** Climb to 3000 direct ZABAX and via 176° track to UBG VOR/DME and hold, continue climb-in-hold to 3000.

ATIS <b>127.65</b>	PORTLAND APP CON <b>126.0 284.6</b>	HILLSBORO TOWER* <b>119.3 (CTAF) 239.3</b>	GND CON <b>121.7</b>	UNICOM <b>122.95</b>
-----------------------	--	---	-------------------------	-------------------------



CATEGORY	A	B	C	D
LPV DA		598-1	399 (400-1)	
LNAV/VNAV DA		651-1	452 (500-1)	
LNAV MDA	620-½ 421 (500-½)		620-¾ 421 (500-¾)	620-1 421 (500-1)
CIRCLING		680-½ 476 (500-½)		760-2 556 (600-2)

NW-1, 11 MAR 2010 to 08 APR 2010

NW-1, 11 MAR 2010 to 08 APR 2010