

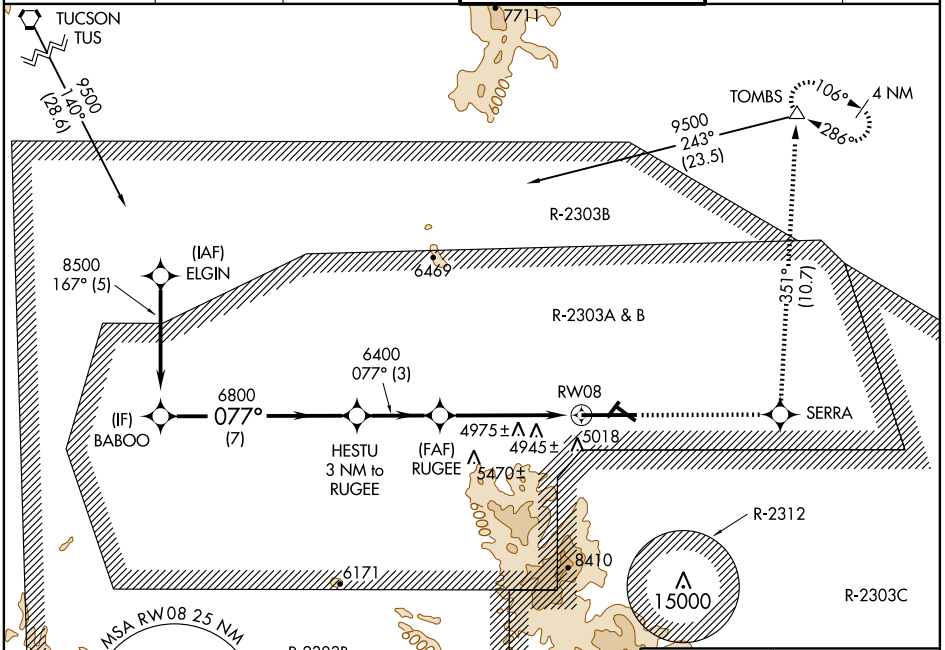
APP CRS	Rwy Idg	12001
077°	TDZE	4719
	Apt Elev	4719

RNAV (GPS) RWY 8

FORT HUACHUCA-SIERRA VISTA/ SIERRA VISTA MUNI-LIBBY AAF (FHU)

 	DME/DME RNP-0.3 NA. Circling not authorized south of runways 8 and 30.	MISSED APPROACH: Climb to 9500 direct SERRA and via 351° track to TOMBS and hold.

ATIS	ASOS	LIBBY AAF GCA*	LIBBY TOWER*	GND CON	UNICOM
134.75 265.7	119.675	127.05 254.35	124.95 (CTAF) 284.75	121.7 268.7	122.95



BABOO	VGSI and descent angles not coincident.	9500	SERRA	351° track	TOMBS
8500	HESTU 3 NM to RUGEE	RUGEE			
Procedure Turn NA	077°	6800	6400	3.05° TCH 50	RWY 8
	7 NM	3 NM	5 NM		

CATEGORY	A	B	C	D
LNAV MDA	5920-1¼ 1201 (1300-1¼)	5920-1½ 1201 (1300-1½)	5920-3	1201 (1300-3)
CIRCLING	5920-1¼ 1201 (1300-1¼)	5920-1½ 1201 (1300-1½)	5920-3	1201 (1300-3)

HIRL Rwy 8-26
MIRL Rwy 3-21 and 12-30

RNAV (GPS) RWY 8

SW-4, 19 NOV 2009 to 17 DEC 2009

SW-4, 19 NOV 2009 to 17 DEC 2009