

# ILS or LOC RWY 26

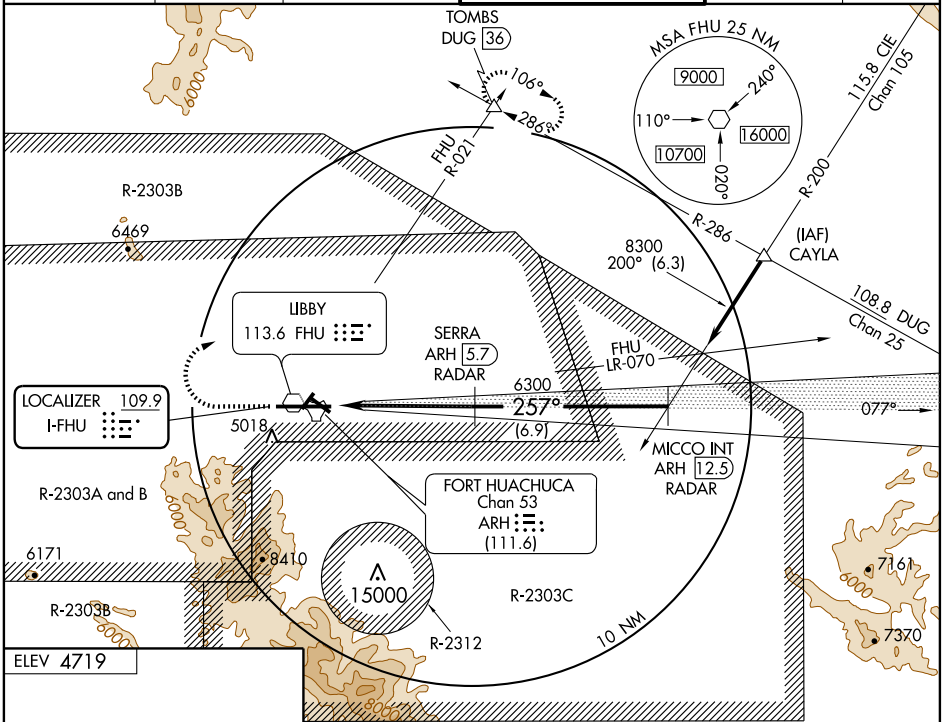
LOC I-FHU <b>109.9</b>	APP CRS <b>257°</b>	Rwy Idg TDZE Apt Elev	<b>12001</b> <b>4629</b> <b>4719</b>
---------------------------	------------------------	-----------------------------	--

FORT HUACHUCA-SIERRA VISTA/ SIERRA VISTA MUNI-LIBBY AAF (FHU)

**⚠** Circling not authorized south of Rwy 8 and 30.  
**ASR/PAR**

MISSED APPROACH: Climb to 5300, then climbing right turn to 9500 via FHU R-021 to TOMBS and hold.

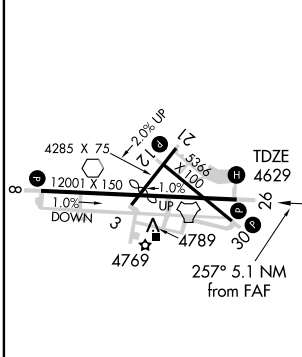
ATIS <b>134.75 265.7</b>	ASOS <b>119.675</b>	LIBBY AAF GCA* <b>127.05 254.35</b>	LIBBY TOWER* <b>124.95 (CTAF) 284.75</b>	GND CON <b>121.7 268.7</b>	UNICOM <b>122.95</b>
-----------------------------	------------------------	--	---	-------------------------------	-------------------------



SW-4, 19 NOV 2009 to 17 DEC 2009

SW-4, 19 NOV 2009 to 17 DEC 2009

ELEV 4719



## RADAR or DME REQUIRED

5300	9500	TOMBS	SERRA ARH 5.7	MICCO INT ARH 12.5
↑	↻ FHU R-021	△	RADAR	RADAR
TACAN ARH 0.6		6300		8300
↓ 0.6		↘ 257°		Procedure Turn NA
5.1 NM		6.9 NM		GS 3.00°
				TCH 49

HIRL Rwy 8-26	MIRL Rwy 3-21 and 12-30	FAF to MAP 5.1 NM			
Knots	60 90 120 150 180	Min:Sec	5:06 3:24 2:33 2:02 1:42	CATEGORY	A B C D
S-ILS 26	4829-3/4 200 (200-3/4)	S-LOC 26	4920-1 291 (300-1)	CIRCLING	5160-1 441 (500-1) 5180-1 461 (500-1) 5180-1 1/2 461 (500-1 1/2) 5280-2 561 (600-2)

# ILS or LOC RWY 26