

# RNAV (GPS) RWY 15

LAKE CHARLES RGNL (LCH)

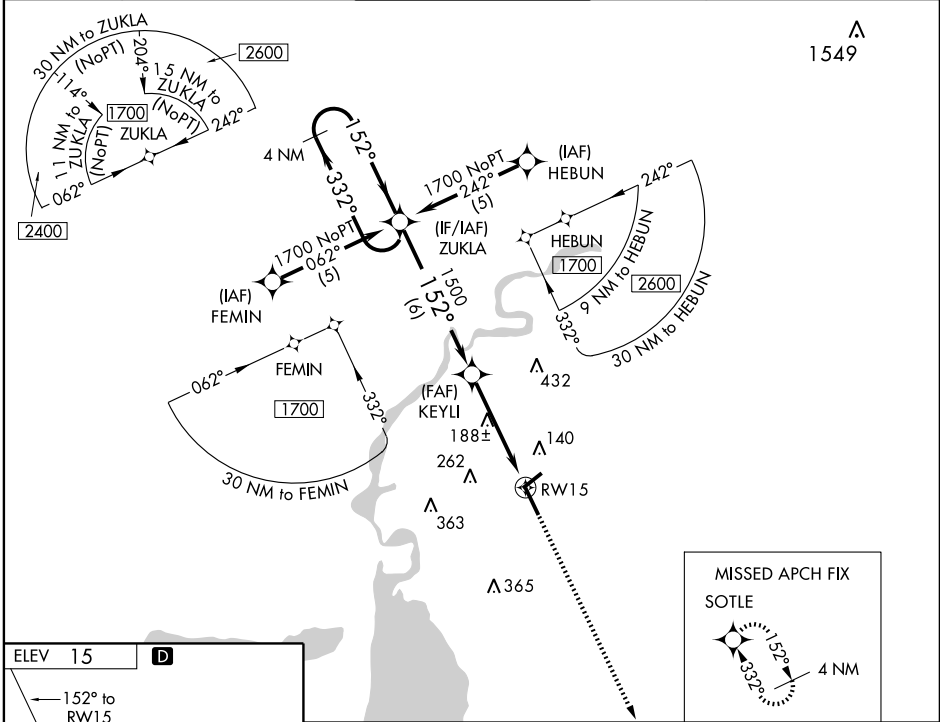
APP CRS <b>152°</b>	Rwy Idg <b>6500</b>
	TDZE <b>12</b>
	Apt Elev <b>15</b>

<b>NA</b>	BARO VNAV NA below -15°C (5°F). GPS or RNP-0.3 Required.
ASR	DME/DME RNP-0.3 NA.



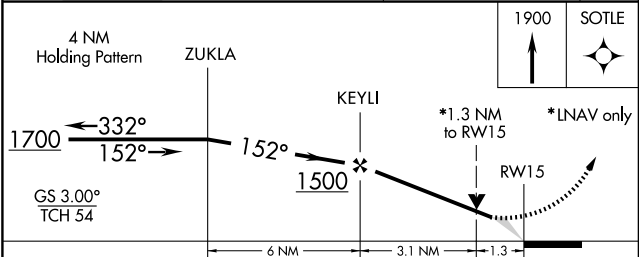
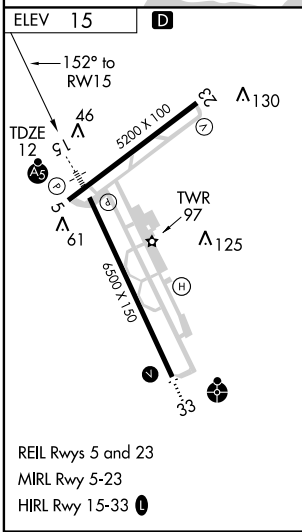
MISSED APPROACH: Climb to 1900 direct SOTLE WP and hold.

ATIS <b>118.75</b>	LAKE CHARLES APP CON* <b>119.35 353.75</b>	LAKE CHARLES TOWER* <b>120.7</b> (CTAF) <b>257.8</b>	GND CON <b>121.8</b>	CLNC DEL <b>126.25</b>	UNICOM <b>122.95</b>
-----------------------	-----------------------------------------------	---------------------------------------------------------	-------------------------	---------------------------	-------------------------



SC-4, 19 NOV 2009 to 17 DEC 2009

SC-4, 19 NOV 2009 to 17 DEC 2009



CATEGORY	A	B	C	D
GLS PA DA	NA			
LNAV/VNAV DA	340/24 328 (400-½)			340/40 328 (400-¾)
LNAV	440/24	428 (500-½)	440/40 428 (500-¾)	440/50 428 (500-1)
CIRCLING	440-1 425 (500-1)	480-1 465 (500-1)	480-1½ 465 (500-1½)	580-2 565 (600-2)