

LAKE CHARLES, LOUISIANA


AL-5083 (FAA)

RNAV (GPS) RWY 33

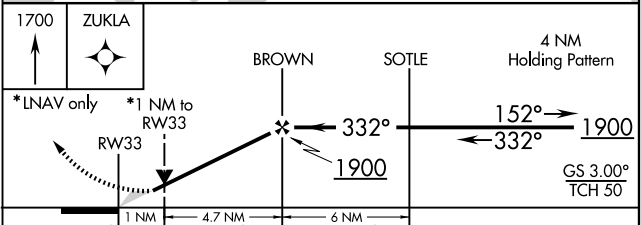
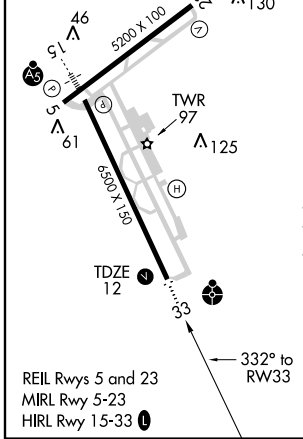
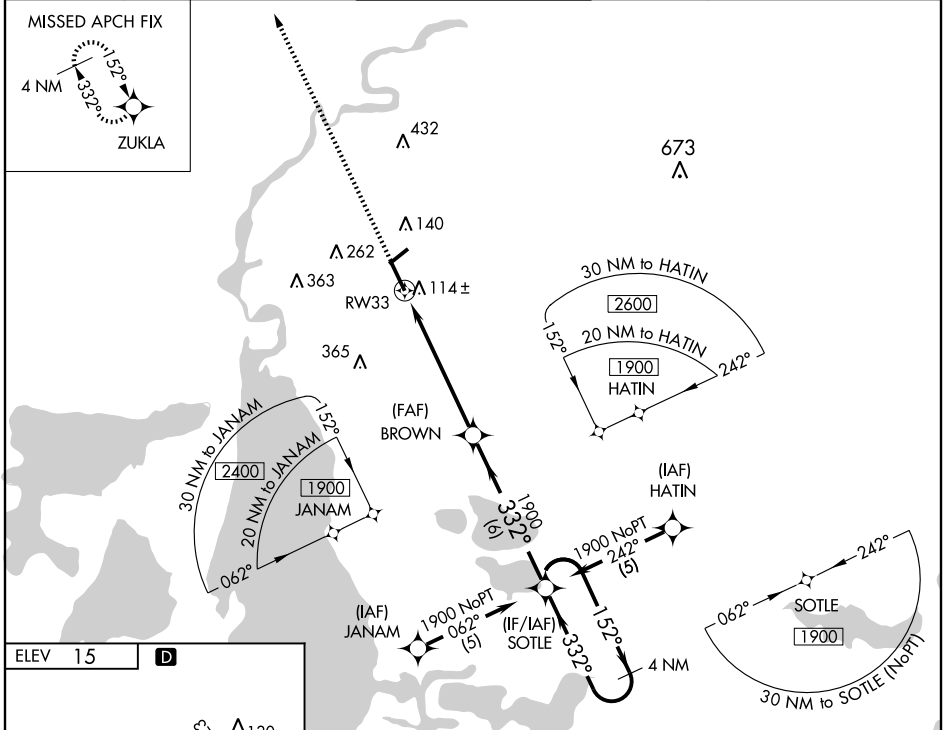
LAKE CHARLES RGNL (LCH)

WAAS CH 56215 W33A	APP CRS 332°	Rwy Idg 6500 TDZE 12 Apt Elev 15
--	------------------------	---

ASR BARO-VNAV NA below -15°C (5°F). DME/DME RNP-0.3 NA.
For inoperative ODALS increase LPV CATS A-C visibility to 1 mile.
Inoperative table does not apply to LNAV/VNAV.

ODALS  MISSED APPROACH: Climb to 1700 direct ZUKLA WP and hold.

ATIS 118.75	LAKE CHARLES APP CON* 119.35 353.75	LAKE CHARLES TOWER* 120.7 (CTAF) 257.8	GND CON 121.8	CLNC DEL 126.25	UNICOM 122.95
-----------------------	---	--	-------------------------	---------------------------	-------------------------



CATEGORY	A	B	C	D
LPV DA	270-¾	258 (300-¾)		270-1 258 (300-1)
LNAV/VNAV DA	380-1¼ 368 (400-1¼)			
LNAV MDA	380-¾	368 (400-¾)		380-1¼ 368 (400-1¼)
CIRCLING	440-1¼ 425 (500-1¼)	480-1¼ 465 (500-1¼)	480-1½ 465 (500-1½)	580-2 565 (600-2)

LAKE CHARLES, LOUISIANA
Amdt 1 08325

30°08'N-93°13'W

LAKE CHARLES RGNL (LCH)

RNAV (GPS) RWY 33

SC-4, 19 NOV 2009 to 17 DEC 2009

SC-4, 19 NOV 2009 to 17 DEC 2009