

RNAV (GPS) RWY 10

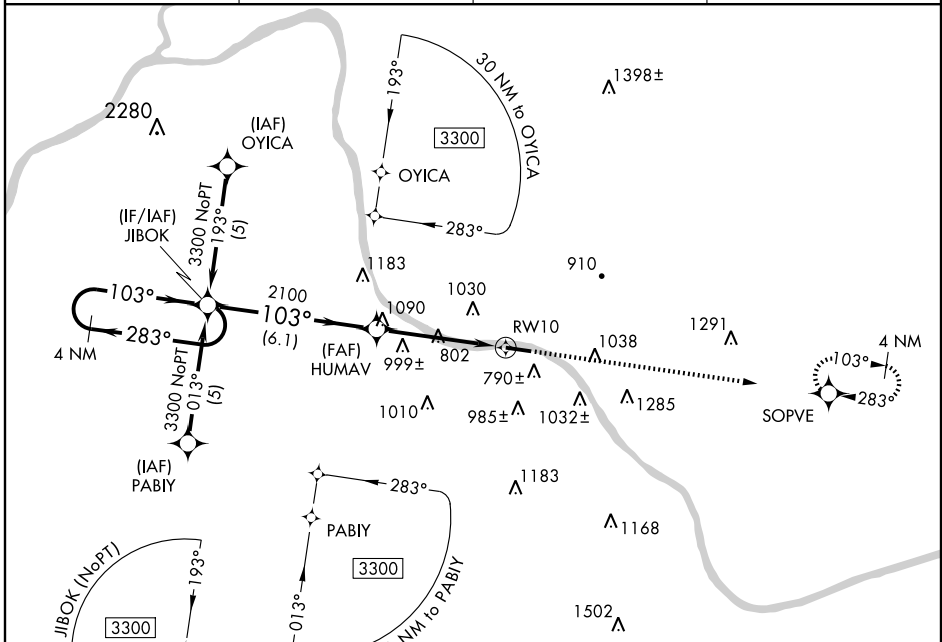
ASHLAND RGNL (DWU)

APP CRS	Rwy Idg	5602
	TDZE	546
103°	Apt Elev	546

⚠ DME/DME RNP-0.3 NA. Visibility reduction by helicopters NA. When local altimeter setting not received, use Huntington altimeter setting and increase all MDA 80 feet, LNAV Cat. B, C, D and Circling Cat. C, D visibility ¼ mile.

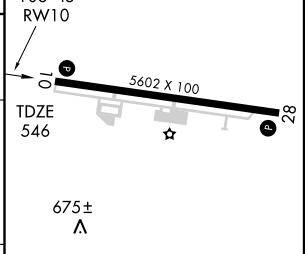
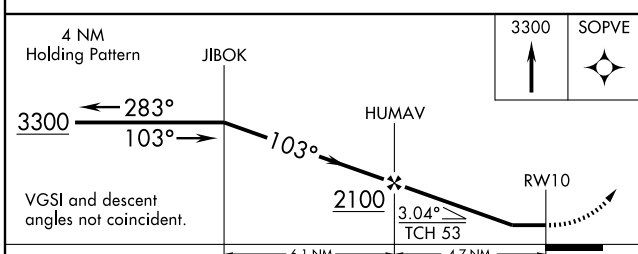
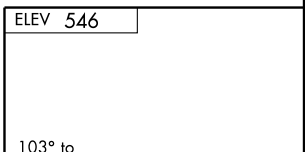
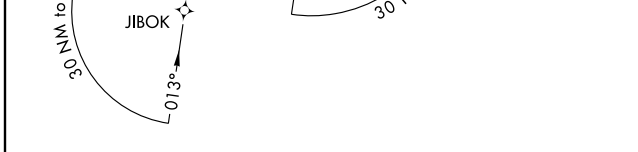
MISSED APPROACH: Climb to 3300 direct SOPVE and hold.

AWOS-3 132.425	HUNTINGTON APP CON 128.4 270.1	CLNC DEL 121.7	UNICOM 122.8 (CTAF) 📻
--------------------------	--	--------------------------	--



SE-1, 11 MAR 2010 to 08 APR 2010

SE-1, 11 MAR 2010 to 08 APR 2010



CATEGORY	A	B	C	D
LNAV MDA	1260-1	714 (800-1)	1260-2 714 (800-2)	1260-2¼ 714 (800-2¼)
CIRCLING	1320-1 774 (800-1)	1320-1¼ 774 (800-1¼)	1380-2½ 834 (900-2½)	1380-2¾ 834 (900-2¾)

MIRL Rwy 10-28 **📻**
REIL Rwys 10 and 28 **📻**