

VORTAC YRK	APP CRS	Rwy Idg	5602
112.8	121°	TDZE	546
Chan 75		Apt Elev	546

VOR RWY 10  
ASHLAND RGNL (DWU)

When local altimeter setting not received, use Huntington altimeter setting and increase all MDA 80 feet.

MISSED APPROACH: Climbing left turn to 3300 direct YRK VORTAC and hold.

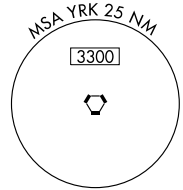
AWOS-3  
132.425

HUNTINGTON APP CON  
128.4 270.1

CLNC DEL  
121.7

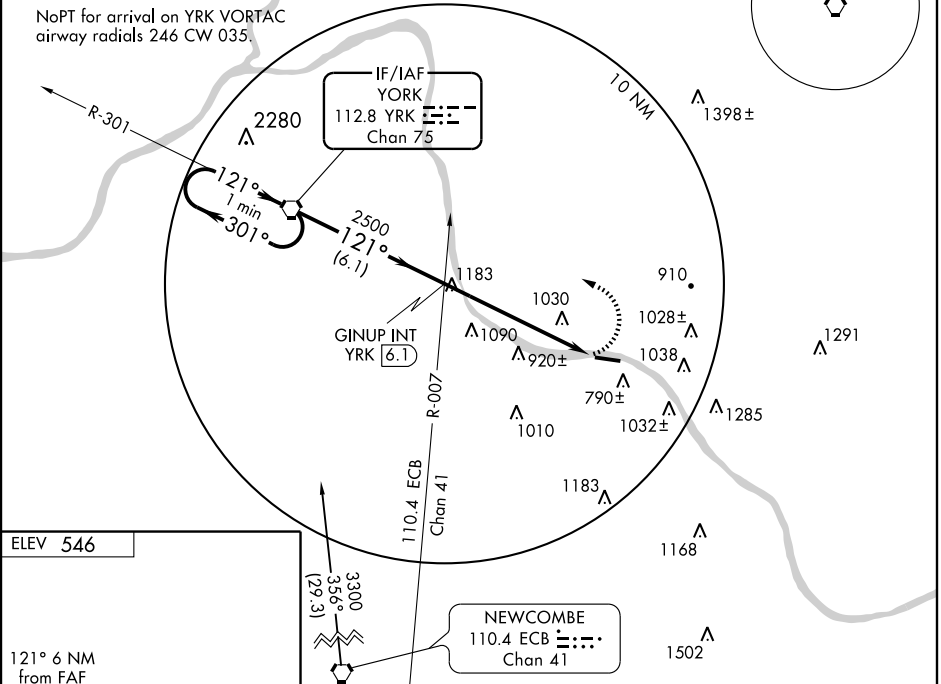
UNICOM  
122.8 (CTAF)

NoPT for arrival on YRK VORTAC  
airway radials 246 CW 035.



SE-1, 19 NOV 2009 to 17 DEC 2009

SE-1, 19 NOV 2009 to 17 DEC 2009



ELEV 546

121° 6 NM from FAF

TDZE 546

675±  $\Delta$

MIRL Rwy 10-28

REIL Rwys 10 and 28

FAF to MAP 6 NM

Knots	60	90	120	150	180
Min:Sec	6:00	4:00	3:00	2:24	2:00

One Minute Holding Pattern

VORTAC

GINUP INT YRK [6.1]

YRK 112.8

3300

3300 ← 301°

121° →

121°

2500

3.00°

TCH 53

6.1 NM

6 NM

CATEGORY	A	B	C	D
S-10	1500-1¼ 954 (1000-1¼)	1500-1½ 954 (1000-1½)	1500-3	954 (1000-3)
CIRCLING	1500-1¼ 954 (1000-1¼)	1500-1½ 954 (1000-1½)	1500-3	954 (1000-3)