

RNAV (GPS) RWY 28

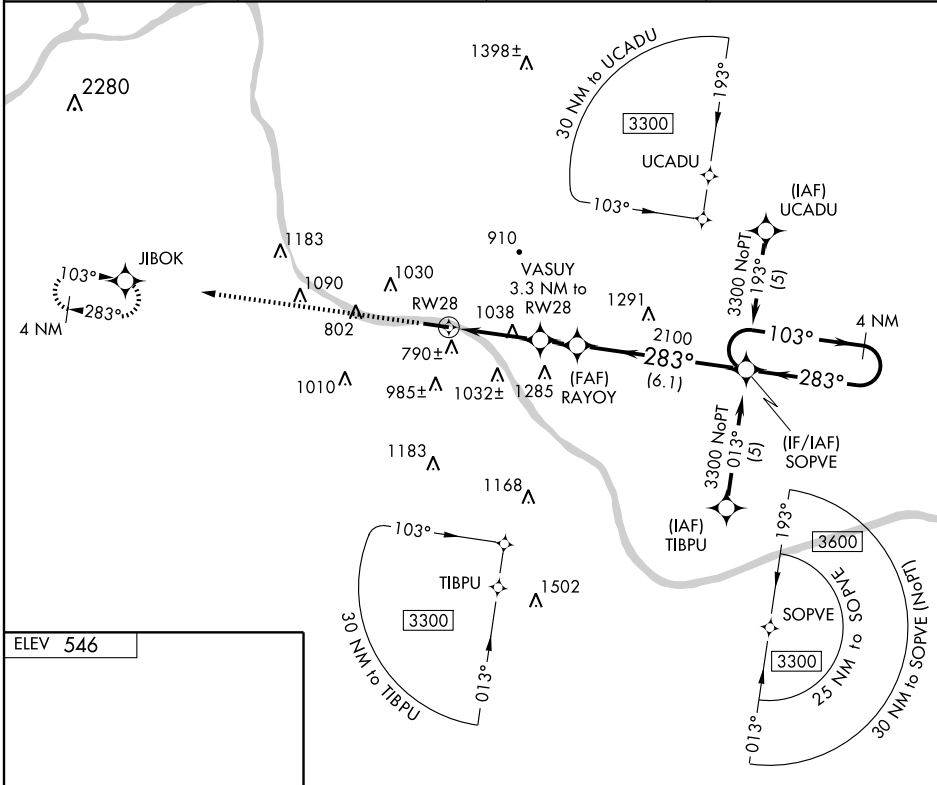
ASHLAND RGNL (DWU)

APP CRS	Rwy Idg	5602
283°	TDZE	546
	Apt Elev	546

▼ DME/DME RNP-0.3 NA. Visibility reduction by helicopters NA.
 ▲ When local altimeter setting not received, use Huntington altimeter setting and increase all MDA 80 feet, LNAV and Circling Cat C, D visibility ¼ mile.

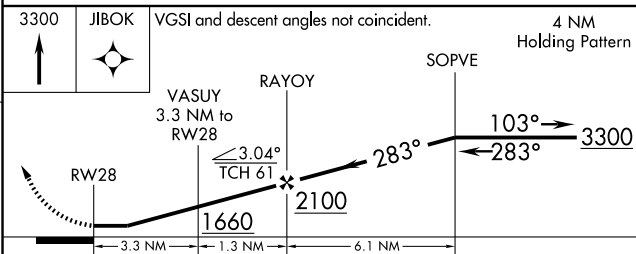
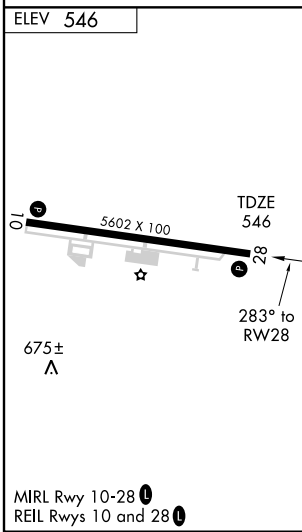
MISSED APPROACH: Climb to 3300 direct JIBOK and hold.

AWOS-3 132.425	HUNTINGTON APP CON 128.4 270.1	CLNC DEL 121.7	UNICOM 122.8(CTAF) 0
--------------------------	--	--------------------------	--------------------------------



SE-1, 19 NOV 2009 to 17 DEC 2009

SE-1, 19 NOV 2009 to 17 DEC 2009



CATEGORY	A	B	C	D
LNAV MDA	1340-1 794 (800-1)	1340-1¼ 794 (800-1¼)	1340-2¼ 794 (800-2¼)	1340-2½ 794 (800-2½)
CIRCLING	1340-1 794 (800-1)	1340-1¼ 794 (800-1¼)	1380-2½ 834 (900-2½)	1380-2¾ 834 (900-2¾)