

GRAIN VALLEY, MISSOURI

AL-5101 (FAA)

VORTAC ANX 114.0 Chan 87	APP CRS 264°	Rwy Idg TDZE Apt Elev	4506 818 835
--	------------------------	-----------------------------	---

VOR/DME RNAV RWY 27

GRAIN VALLEY/EAST KANSAS CITY (3GV)

Use Charles B. Wheeler Downtown Airport altimeter setting.

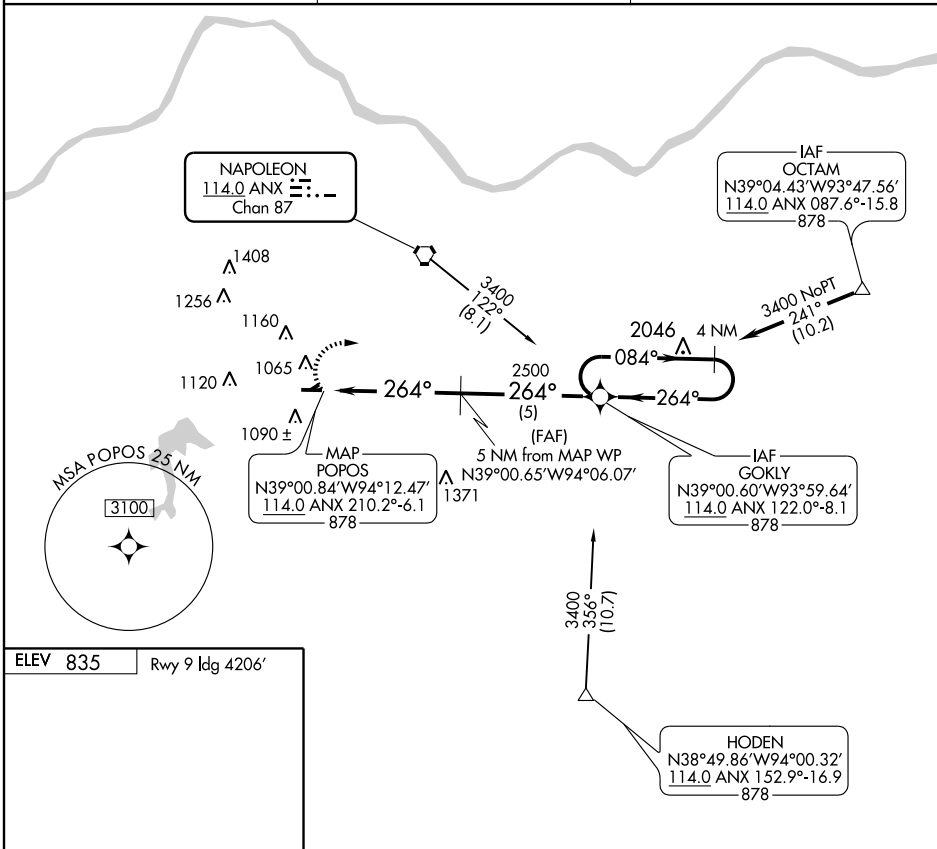
MISSED APPROACH: Climbing right turn to 3400 direct GOKLY WP and hold.

▲ NA

KANSAS CITY APP CON
118.4 294.7

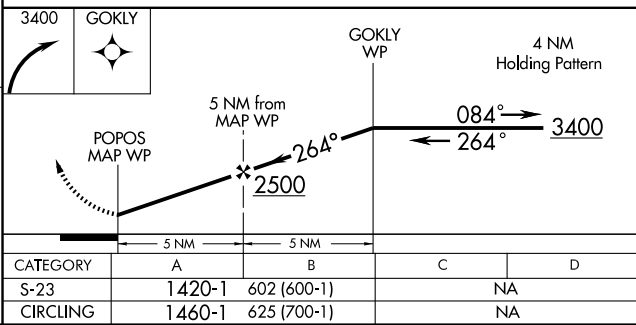
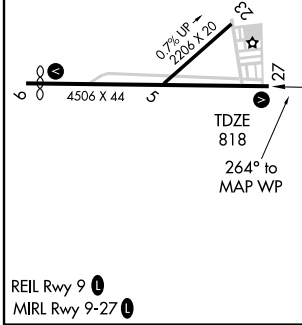
CLNC DEL
121.3

UNICOM
122.8 (CTAF)



NC-3, 11 MAR 2010 to 08 APR 2010

NC-3, 11 MAR 2010 to 08 APR 2010



CATEGORY	A	B	C	D
S-23	1420-1	602 (600-1)		NA
CIRCLING	1460-1	625 (700-1)		NA

GRAIN VALLEY, MISSOURI
Amdt 2A 07074

GRAIN VALLEY/EAST KANSAS CITY (3GV)
39°01'N-94°13'W **VOR/DME RNAV RWY 27**