

VORTAC LCH 113.4	APP CRS 328°	Rwy Idg TDZE 17 Apt Elev 17
Chan 81		

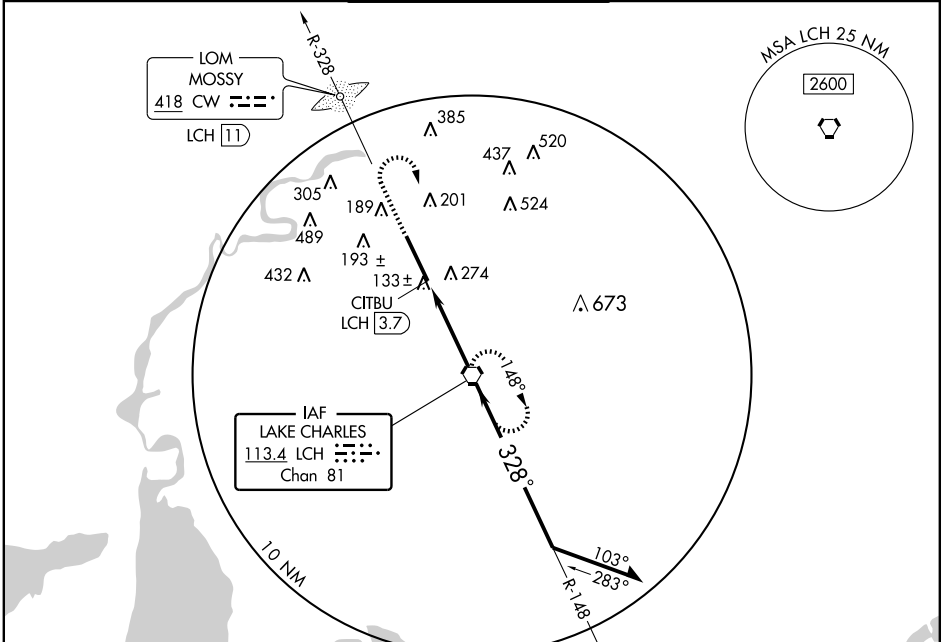
VOR RWY 33

LAKE CHARLES/CHENNAULT INTL (CWF)

⚠ VDP NA when using Lake Charles altimeter setting.
If local altimeter setting not received, use Lake Charles Rgnl altimeter setting and increase all MDAs 20 feet.

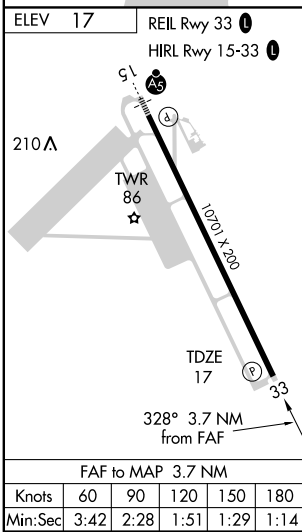
MISSED APPROACH: Climb to 1700 then climbing right turn to 2000 direct LCH VORTAC and hold.

ATIS 120.0	LAKE CHARLES APP CON* 119.8 282.3	CHENNAULT TOWER* 124.2 (CTAF) 290.4	GND CON 121.65 275.8	UNICOM 122.95
----------------------	---	---	--------------------------------	-------------------------

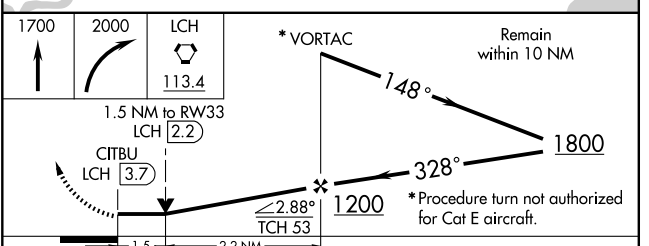


SC-4, 19 NOV 2009 to 17 DEC 2009

SC-4, 19 NOV 2009 to 17 DEC 2009



RADAR REQUIRED FOR CAT E AIRCRAFT



CATEGORY	A	B	C	D	E
S-33	540-1	523 (600-1)	540-1½ 523 (600-1½)	540-1¾	523 (600-1¾)
CIRCLING	580-1	563 (600-1)	580-1½ 563 (600-1½)	580-2	880-3 863 (700-3)