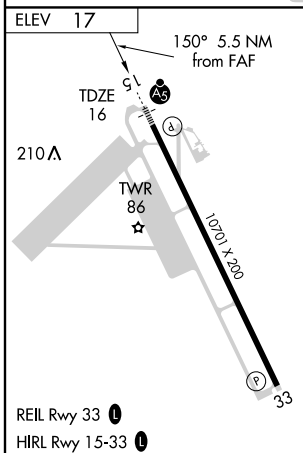
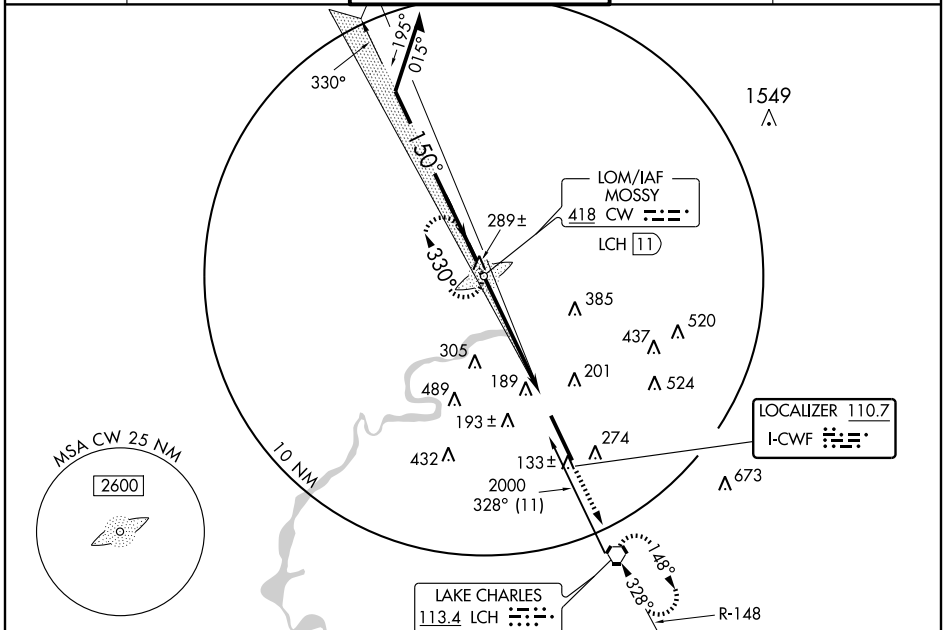


LOC I-CWF <b>110.7</b>	APP CRS <b>150°</b>	Rwy Idg <b>10701</b> TDZE <b>16</b> Apt Elev <b>17</b>
---------------------------	------------------------	--

**ILS or LOC RWY 15**  
LAKE CHARLES/CHENNAULT INTL (CWF)

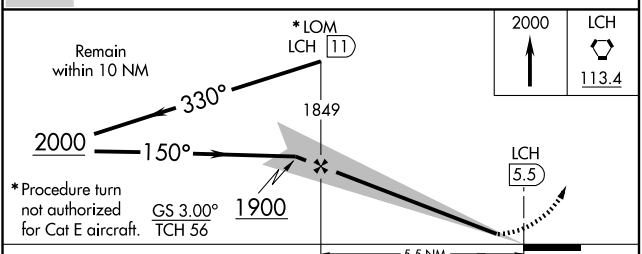
ASR	For inoperative MALS, increase S-ILS 15 Cat E visibility to 3/4 and S-LOC 15 Cat E visibility to 1 1/4. If local altimeter setting not received, use Lake Charles Rgnl altimeter setting and increase DA to 232 feet; increase all MDAs 20 feet and visibility Cats C and E 1/4 mile.	MALS	MISSED APPROACH: Climb to 2000 direct LCH VORTAC and hold.

ATIS <b>120.0</b>	LAKE CHARLES APP CON* <b>119.8 282.3</b>	CHENNAULT TOWER* <b>124.2 (CTAF) 0 290.4</b>	GND CON <b>121.65 275.8</b>	UNICOM <b>122.95</b>
----------------------	---	---	--------------------------------	-------------------------



FAF to MAP 5.5 NM					
Knots	60	90	120	150	180
Min:Sec	5:30	3:40	2:45	2:12	1:50

**RADAR REQUIRED FOR CAT E AIRCRAFT**



CATEGORY	A	B	C	D	E
S-ILS 15	216-1/2 200 (200-1/2)				
S-LOC 15	400-1/2	384 (400-1/2)	400-3/4	384 (400-3/4)	
CIRCLING	580-1	563 (600-1)	580-1 1/2	580-2	880-3
			563 (600-1 1/2)	563 (600-2)	863 (900-3)

SC-4, 19 NOV 2009 to 17 DEC 2009

SC-4, 19 NOV 2009 to 17 DEC 2009